

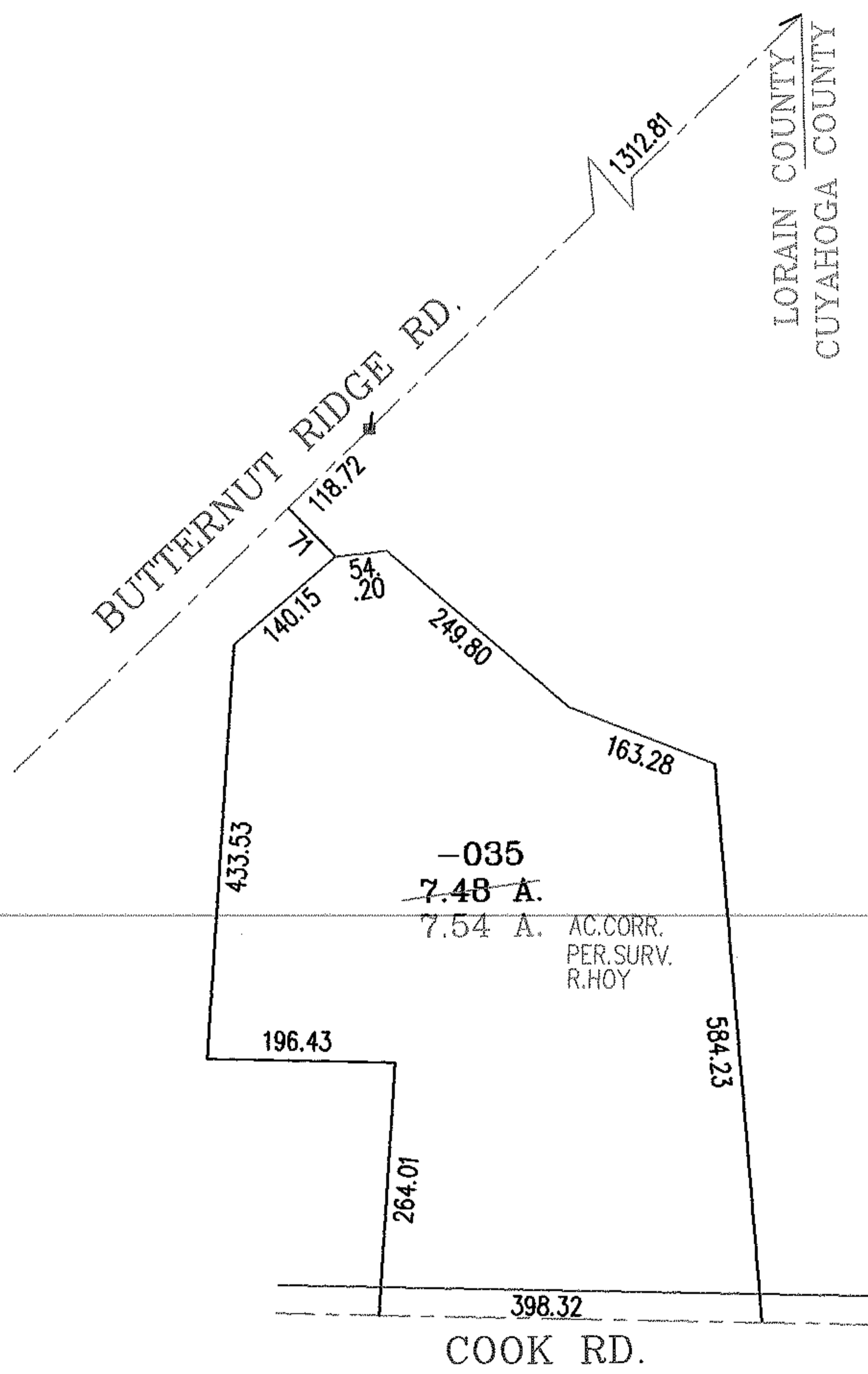
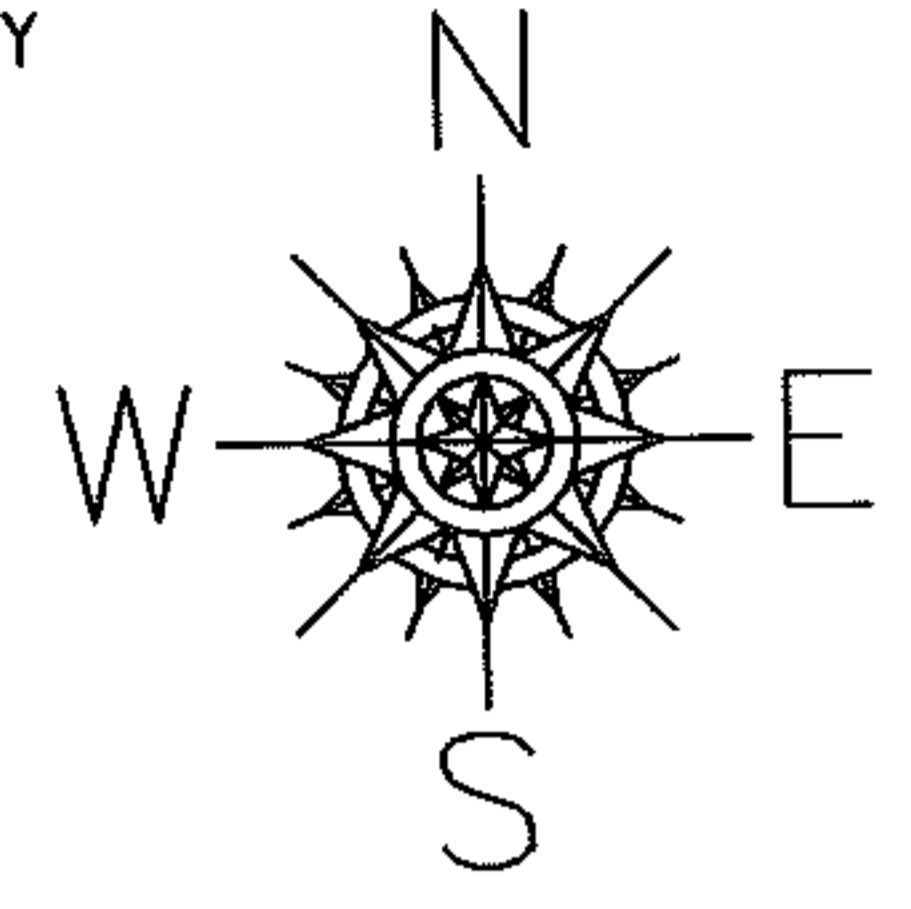
RASTER

PARENT PARCEL: 07-00-004-101-035

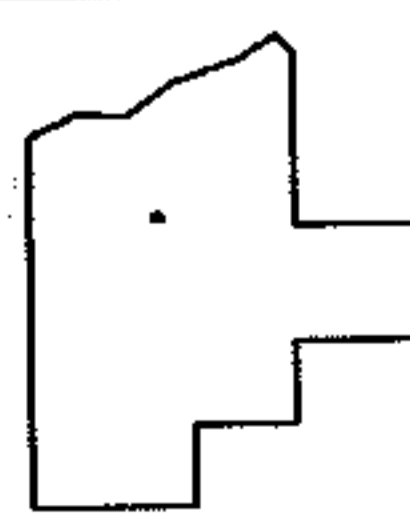
06-01342-C

CHILD PARCEL:

STARTING POINT: INTERSECTION OF C/L OF BUTTERNUT RIDGE RD. AND EAST LINE OF LORAIN COUNTY



LORAIN COUNTY  
CUYAHOGA COUNTY



**SPLITS/DEEDS PROCESSED**  
LORAIN COUNTY TAX MAP DEPARTMENT  
226 MIDDLE AVE. ELYRIA, OHIO

SURVEYED BY:	ROBERT G. HOY
CLOSURE:	.01:10.000
MAP PAGE(S):	7-00-004-D
APPROVED BY:	RRM DATE: 5/12/06
SCALE:	1" = 200 PRIOR INSTRUMENT: OR 421/449