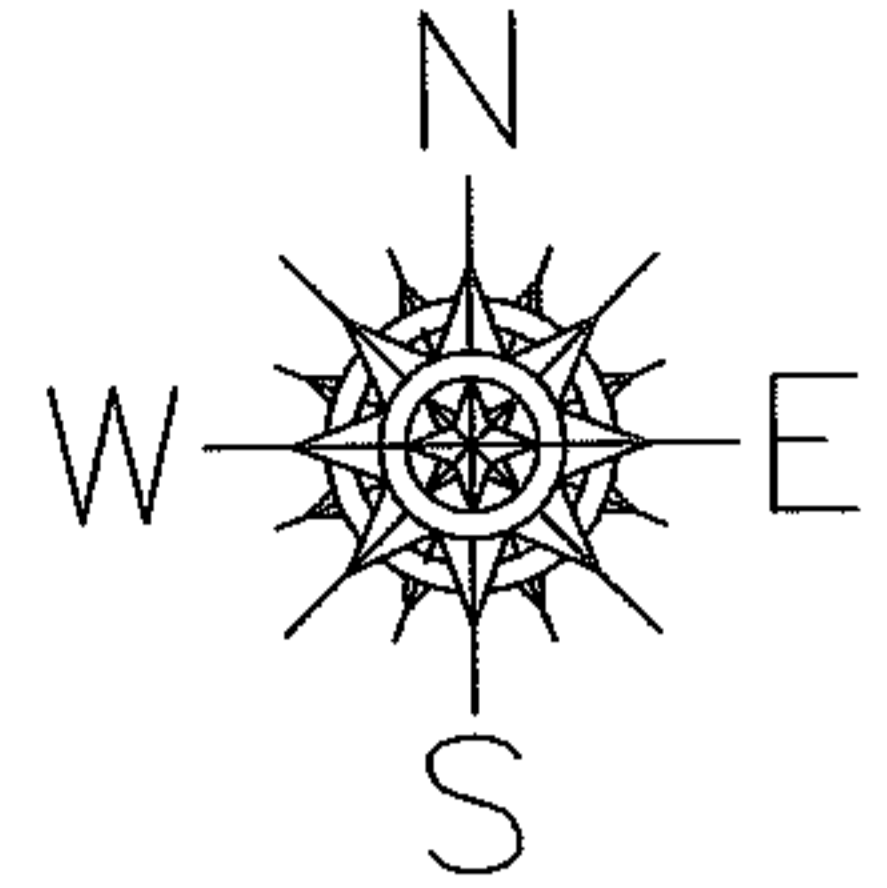


PARENT PARCEL: 03-00-113-103-015

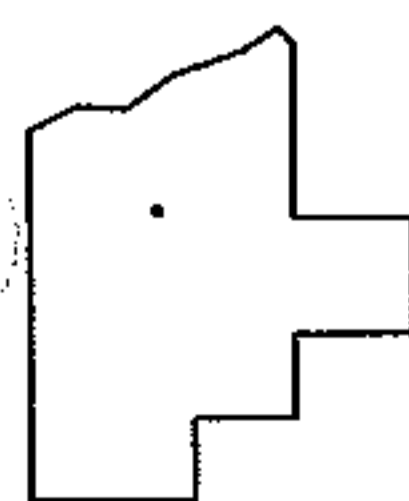
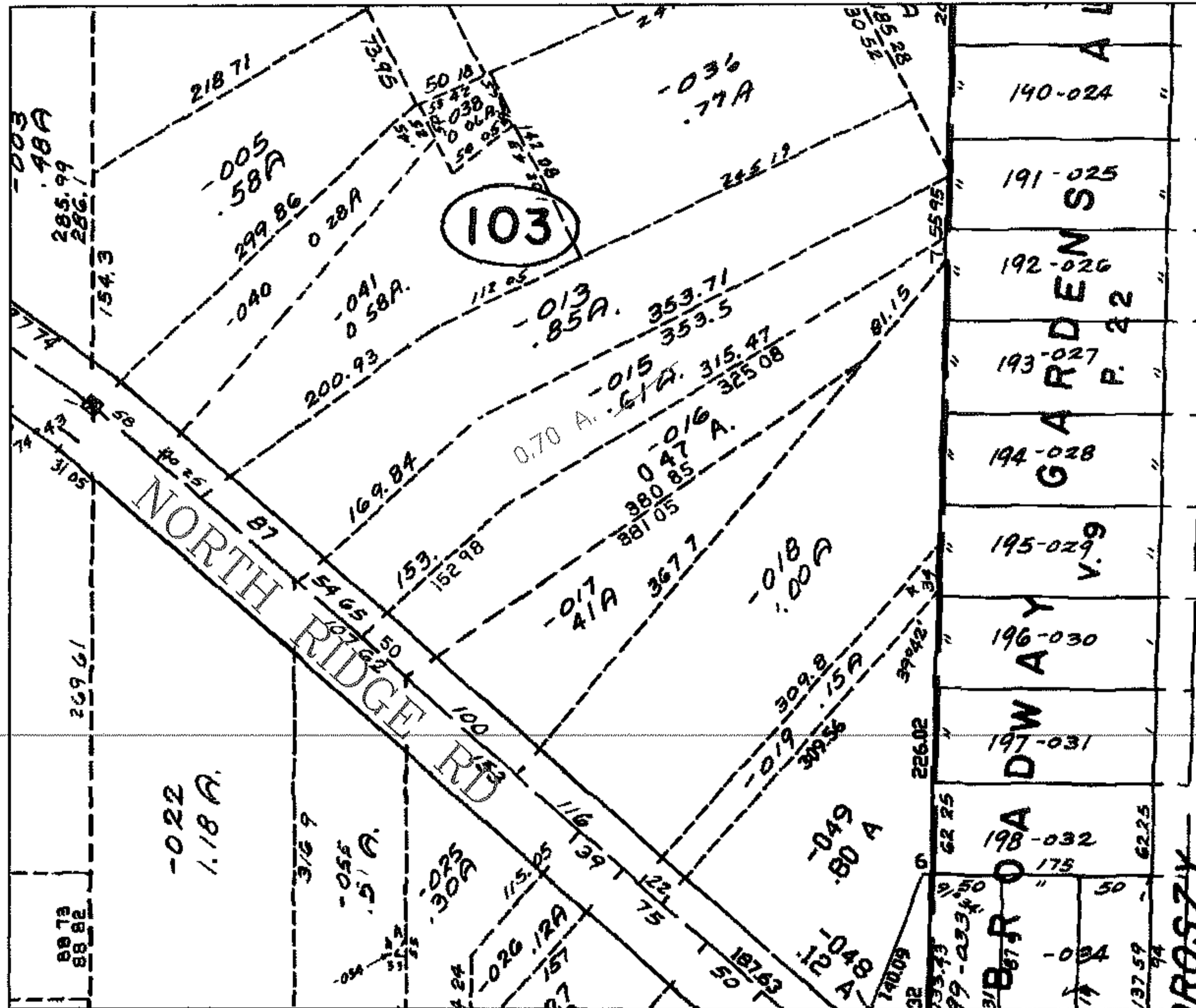
06-01339-C

CHILD PARCEL: --SAME--

STARTING POINT:



AC. CORR. PER DEED



**SPLITS/DEEDS PROCESSED**  
LORAIN COUNTY TAX MAP DEPARTMENT  
226 MIDDLE AVE. ELYRIA, OHIO

SURVEYED BY: N/A  
CLOSURE: N/A  
MAP PAGE(S): 03-00-113-A  
APPROVED BY: DRH DATE: 6/1/2006  
SCALE: 1" = 200 PRIOR INSTRUMENT: 933/444