

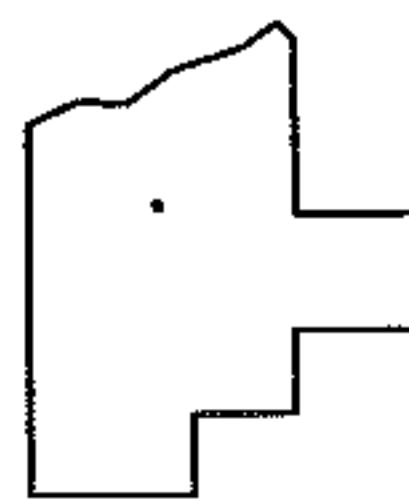
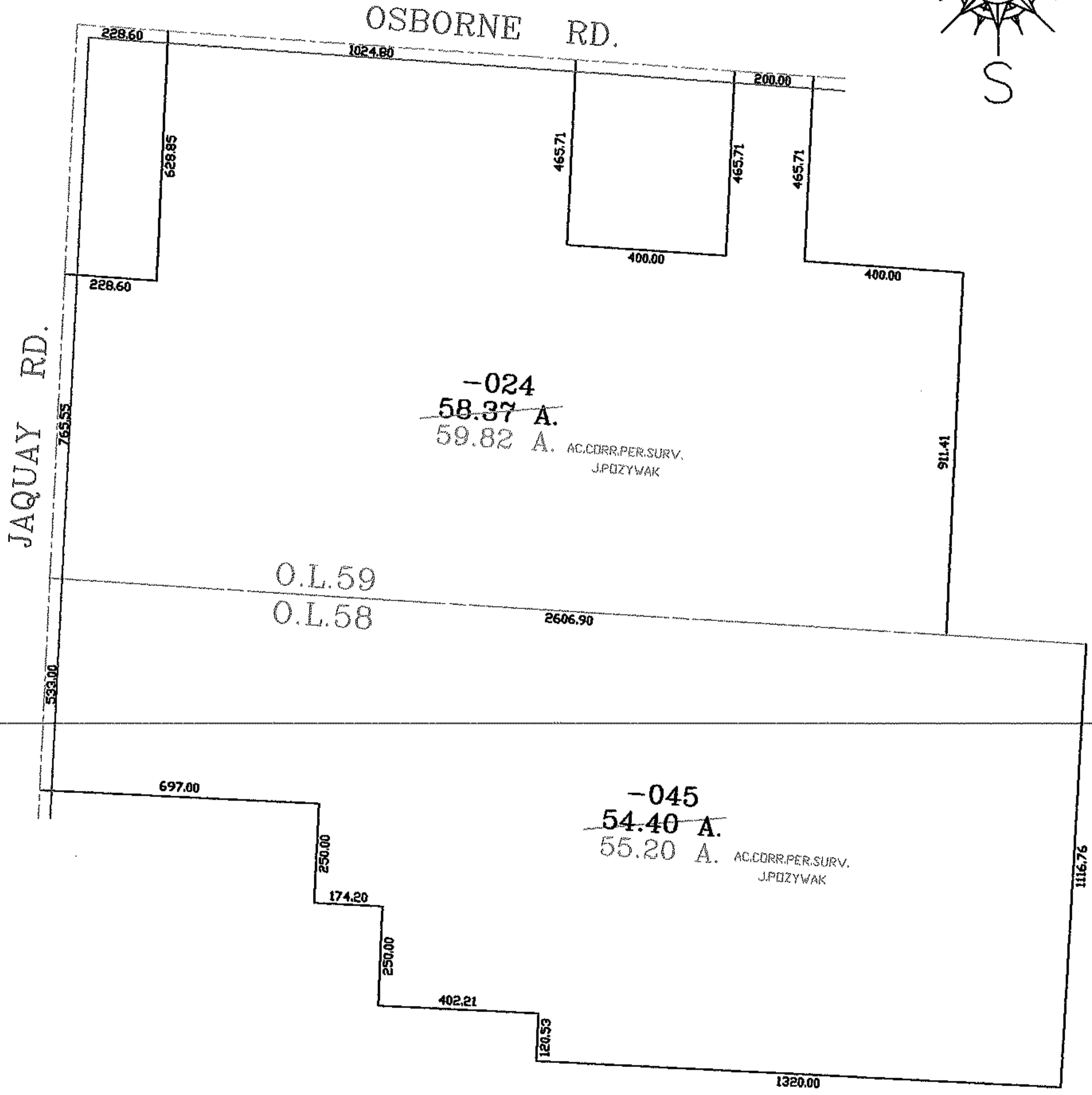
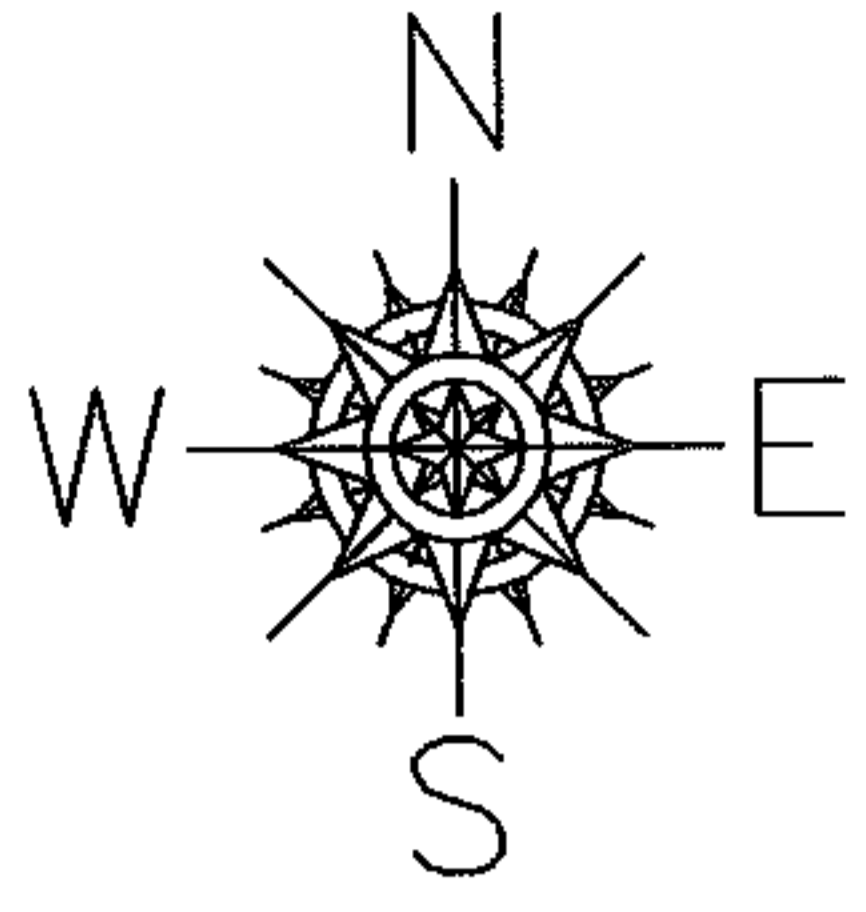
RASTER

PARENT PARCEL: 12-00-058-000-045, 12-00-059-000-024

CHILD PARCEL: XX-XX-XXX-XXX-XXX

STARTING POINT: INTERSECTION OF C/L OF JAQUAY RD. AND C/L OF OSBORNE RD.

06-01322-C



SPLITS/DEEDS PROCESSED
LORAIN COUNTY TAX MAP DEPARTMENT
226 MIDDLE AVE. ELYRIA, OHIO

SURVEYED BY: JOHN POZYWAK
CLOSURE: .01:10.000
MAP PAGE(S): 12-00-058-B
APPROVED BY: RRM DATE: 6-12-06
SCALE: 1" = 400 PRIOR INSTRUMENT: DV 1191/133