

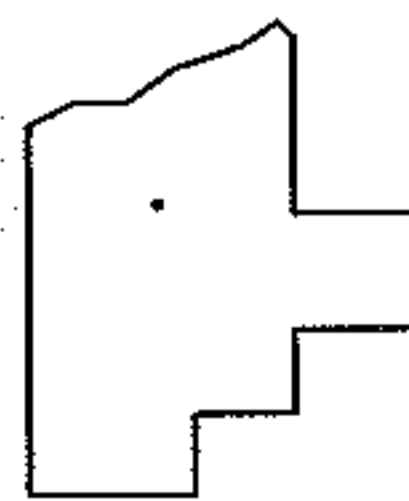
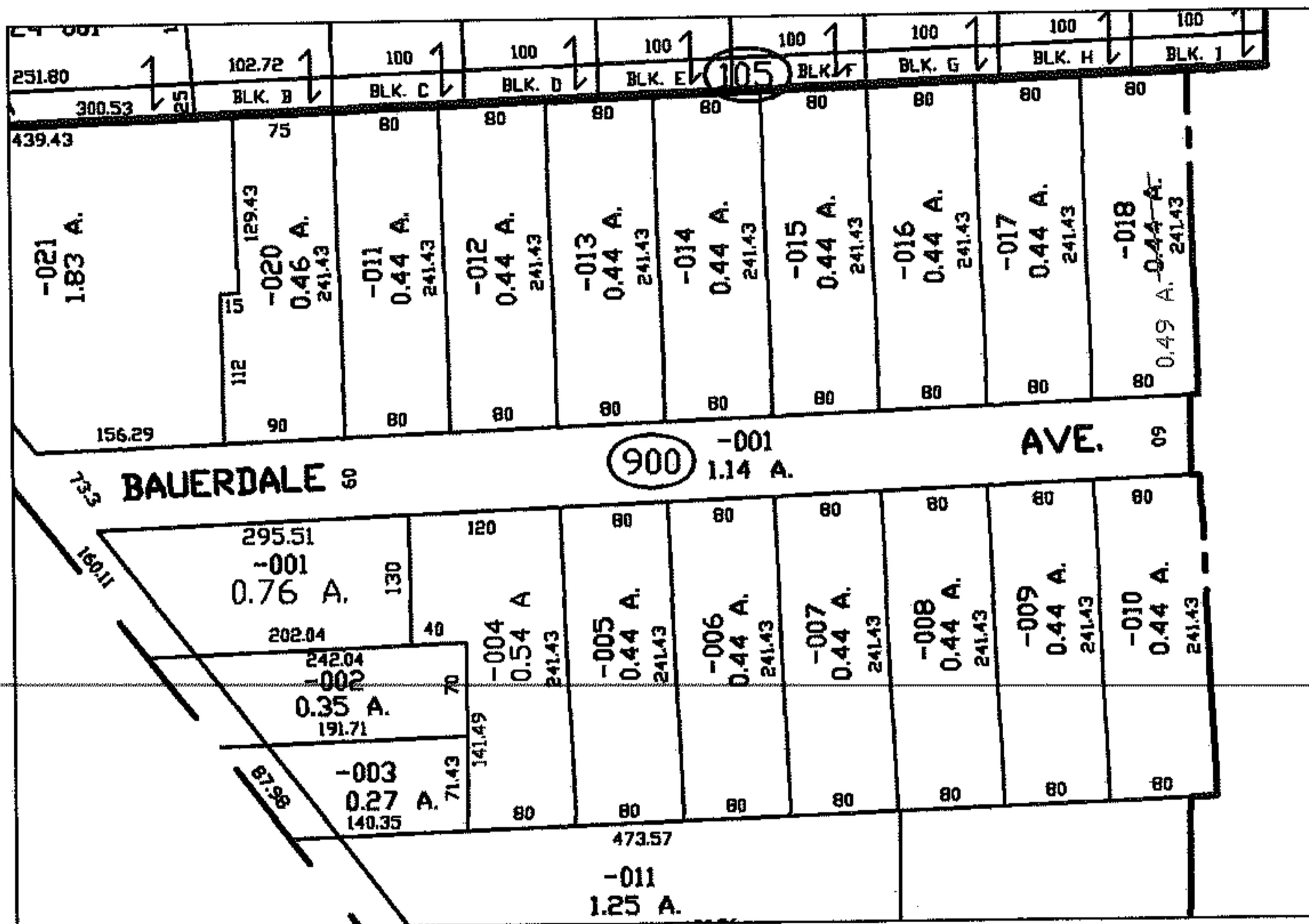
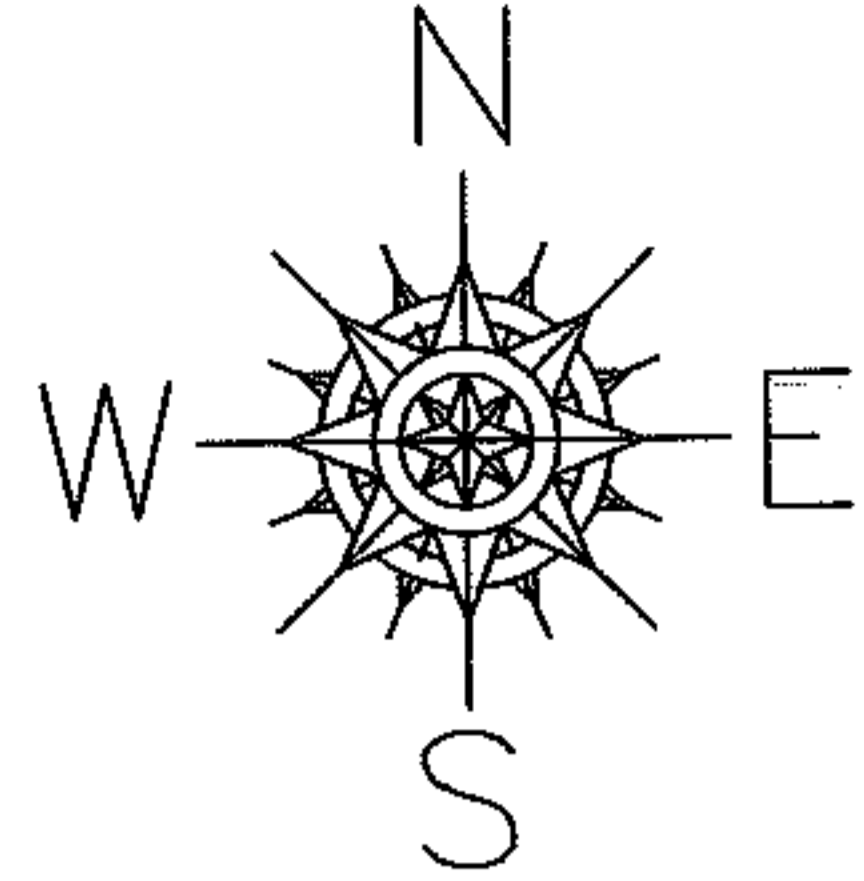
PARENT PARCEL: 04-00-011-105-018

CHILD PARCEL: --SAME--

STARTING POINT:

06-01321-C

AC. CORR.  
PER DEED



**SPLITS/DEEDS PROCESSED**  
LORAIN COUNTY TAX MAP DEPARTMENT  
226 MIDDLE AVE. ELYRIA, OHIO

SURVEYED BY: N/A  
CLOSURE: N/A  
MAP PAGE(S): 04-00-011-A  
APPROVED BY: DRH DATE: 5/30/2006  
SCALE: 1" = 300' PRIOR INSTRUMENT: 694/638