

RASTER

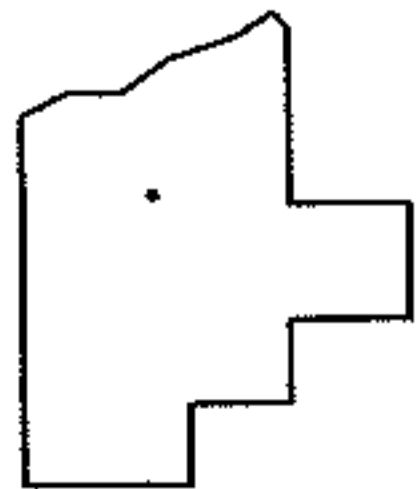
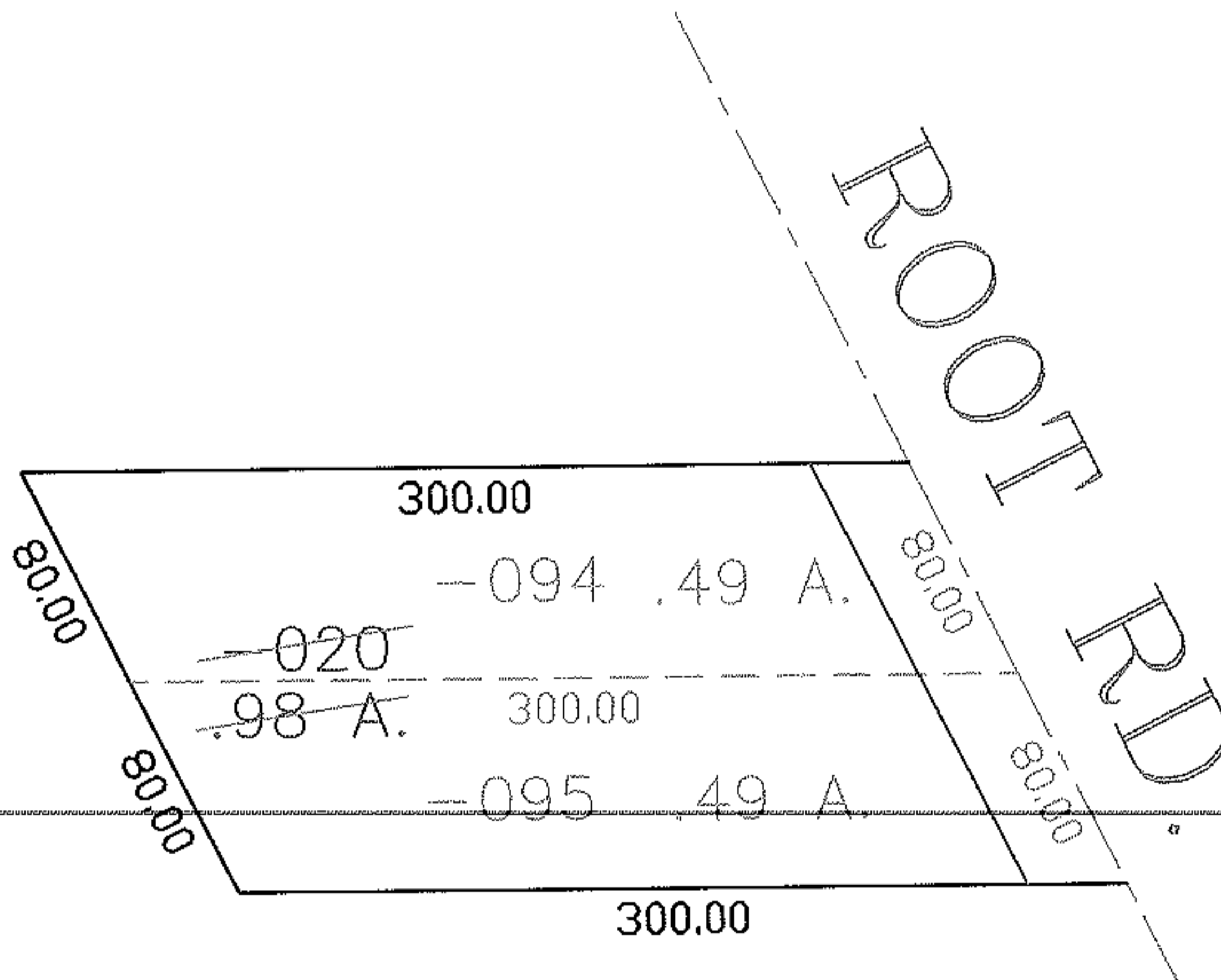
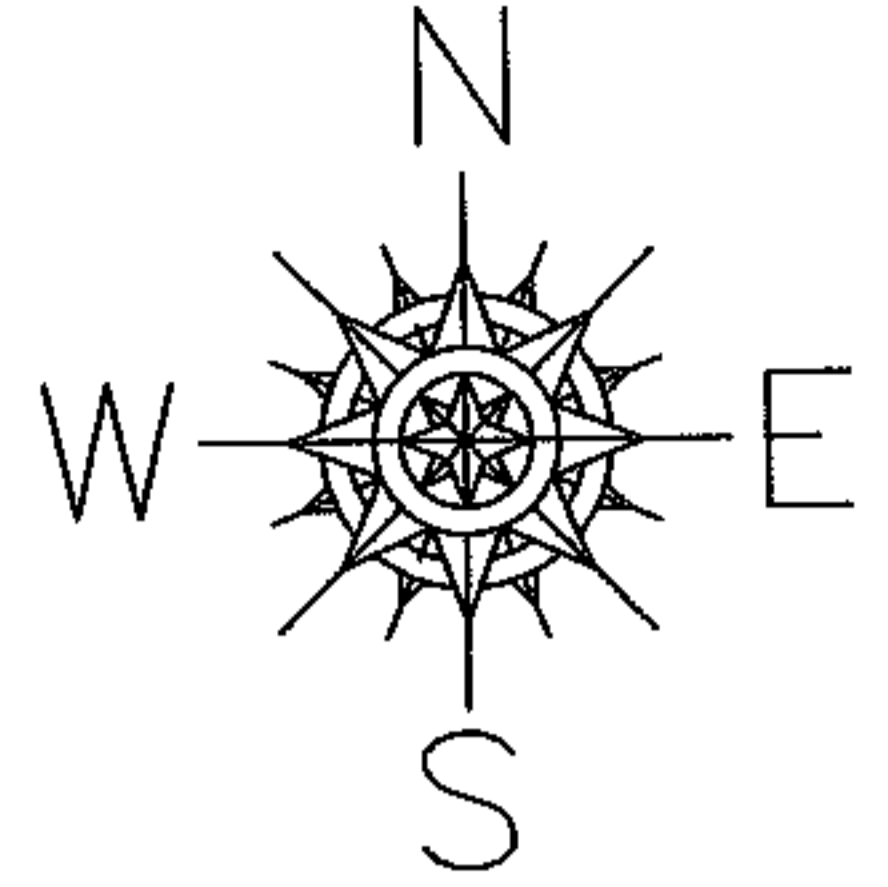
PARENT PARCEL: 07-00-022-101-020

CHILD PARCEL: 07-00-022-101-094, -095

STARTING POINT:

06-01318-U

UNCOMBINATION



SPLITS/DEEDS PROCESSED

LORAIN COUNTY TAX MAP DEPARTMENT
226 MIDDLE AVE. ELYRIA, OHIO

SURVEYED BY: C.T. BIGGS

CLOSURE: 1:10,000

MAP PAGE(S): 07-00-022-B

APPROVED BY: DRH DATE: 4/6/2006

SCALE: 1"= 100 PRIOR INSTRUMENT: OR 1389/568