

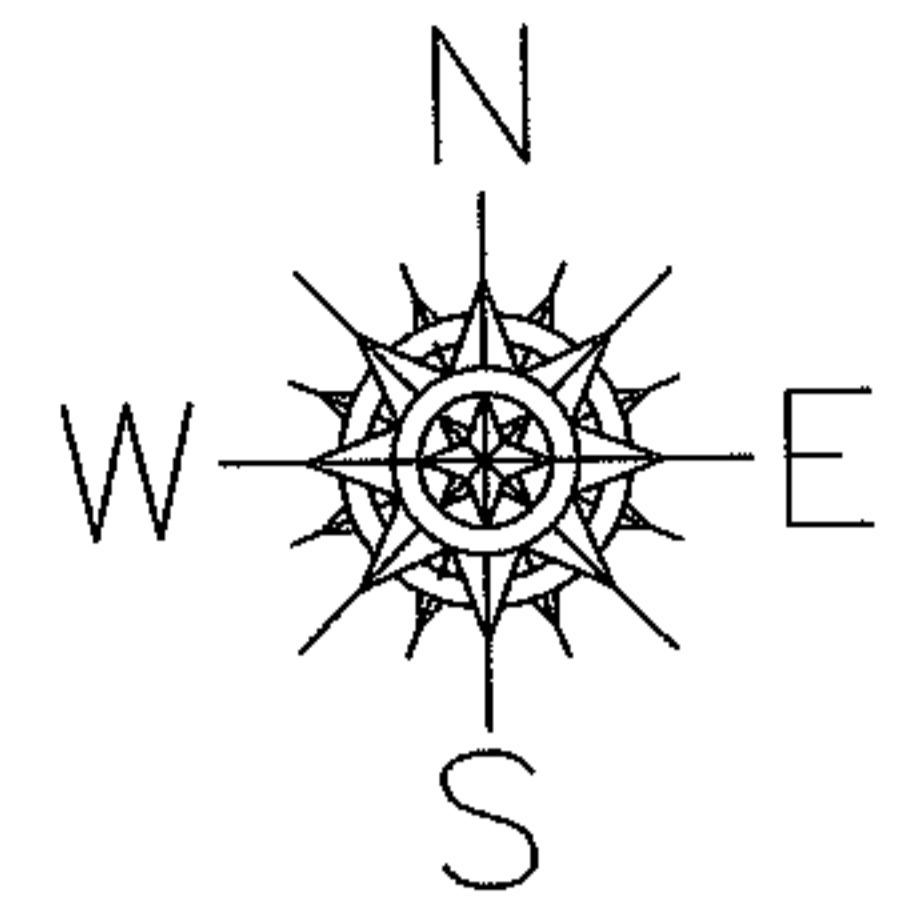
RASTER

PARENT PARCEL: ALLEY VACATION

06-01301-V

CHILD PARCEL:

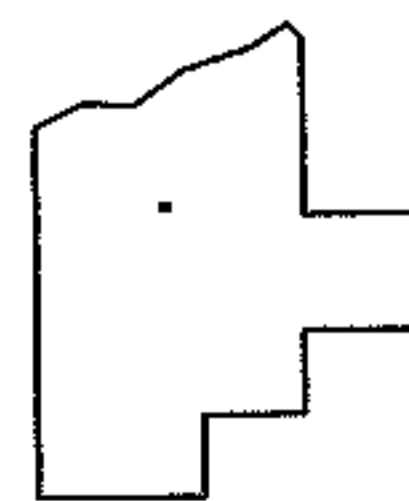
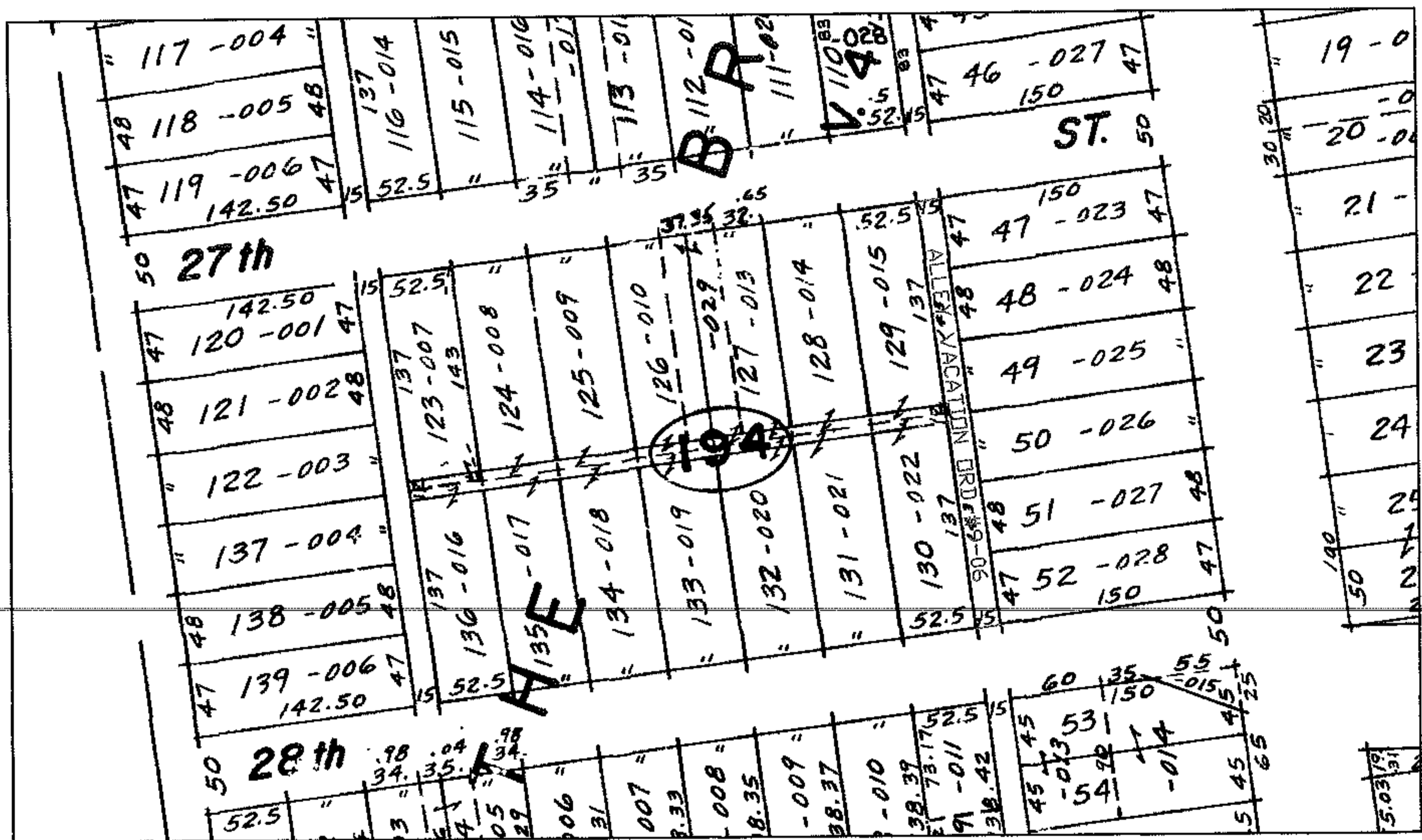
STARTING POINT: FROM S LINE OF W27TH ST AND N LINE OF W28TH



ALLEY VACATION

ORD #9-06

THIS IS BEING RE-PLATTED



SPLITS/DEEDS PROCESSED
LORAIN COUNTY TAX MAP DEPARTMENT
226 MIDDLE AVE. ELYRIA, OHIO

SURVEYED BY: N/A
CLOSURE: N/A
MAP PAGE(S): 02-01-003-H
APPROVED BY: DRH DATE: 3/14/2006
SCALE: 1" = 200' PRIOR INSTRUMENT: