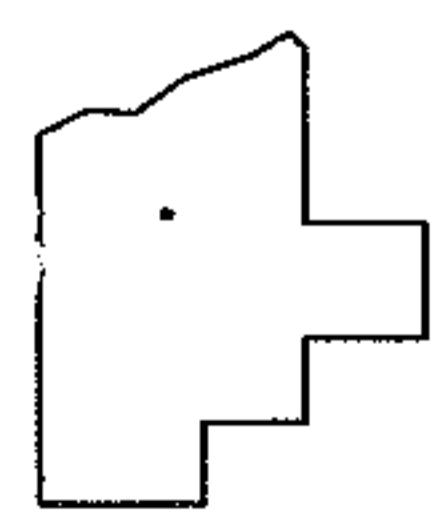
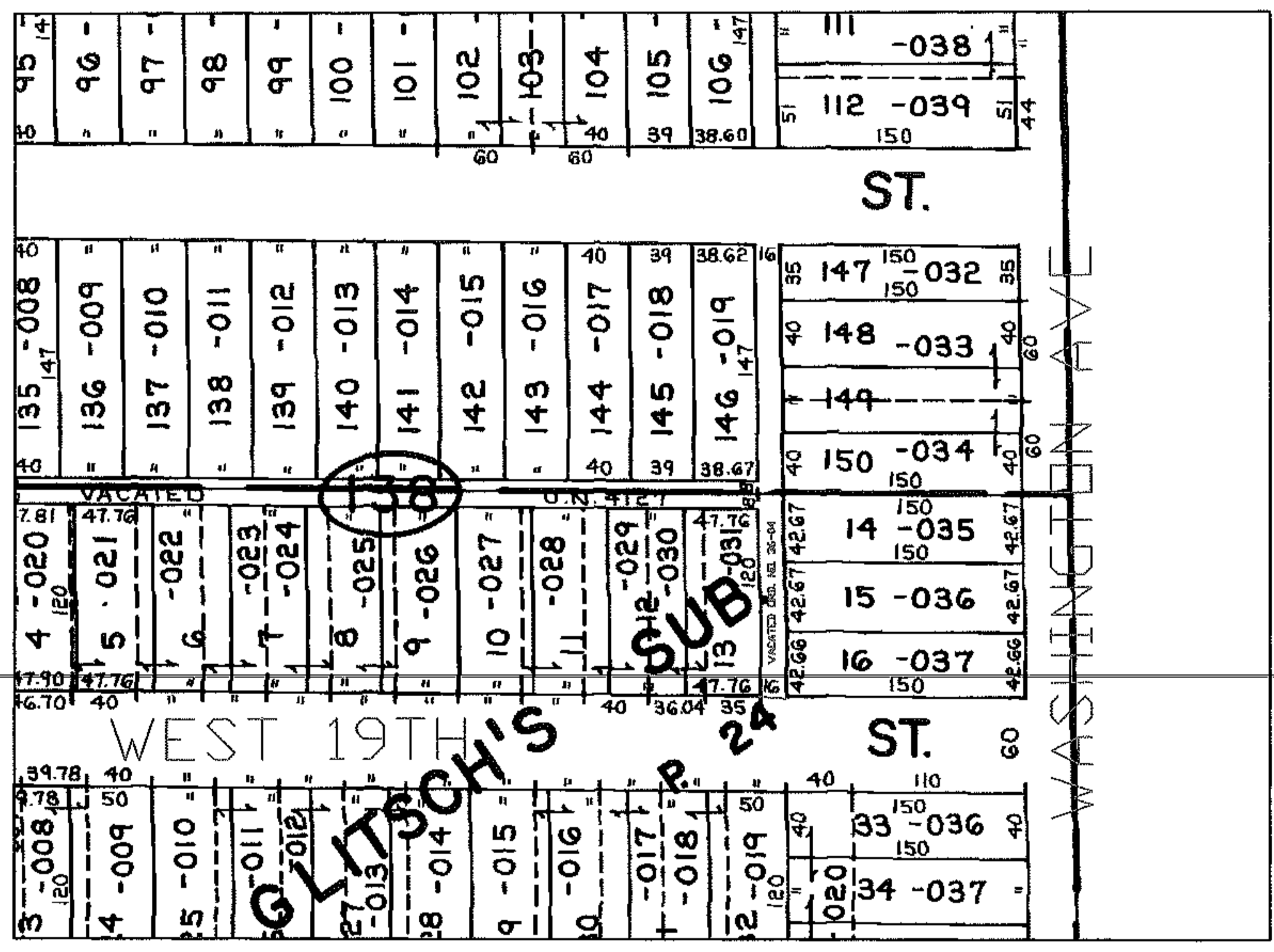
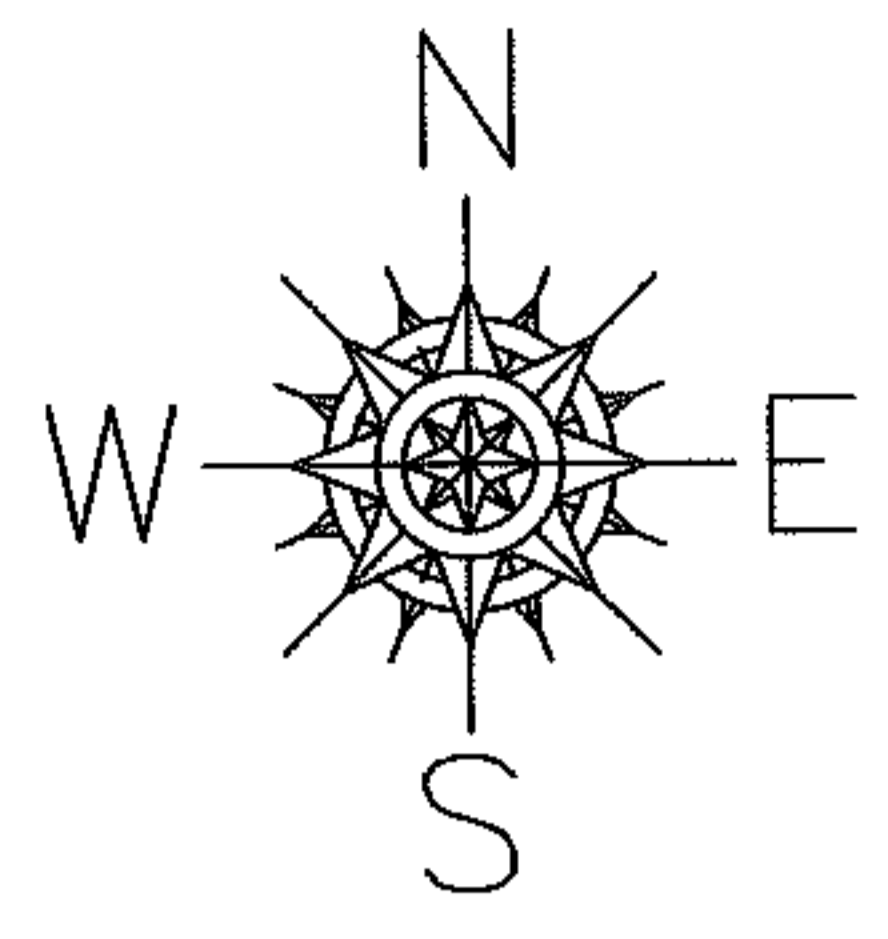


RASTER

PARENT PARCEL: N/A
CHILD PARCEL: N/A
STARTING POINT: INT WASHINGTON AVE AND WEST 19TH ST

06-01292-Z

VACATION ORD
36-04
MAP UPDATE



SPLITS/DEEDS PROCESSED
LORAIN COUNTY TAX MAP DEPARTMENT
226 MIDDLE AVE. ELYRIA, OHIO

SURVEYED BY: N/A
CLOSURE: N/A
MAP PAGE(S): 02-01-006-C
APPROVED BY: DRH DATE: 6/14/2006
SCALE: 1" = 200 PRIOR INSTRUMENT: