

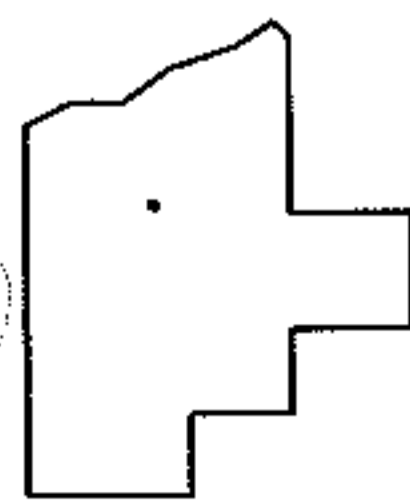
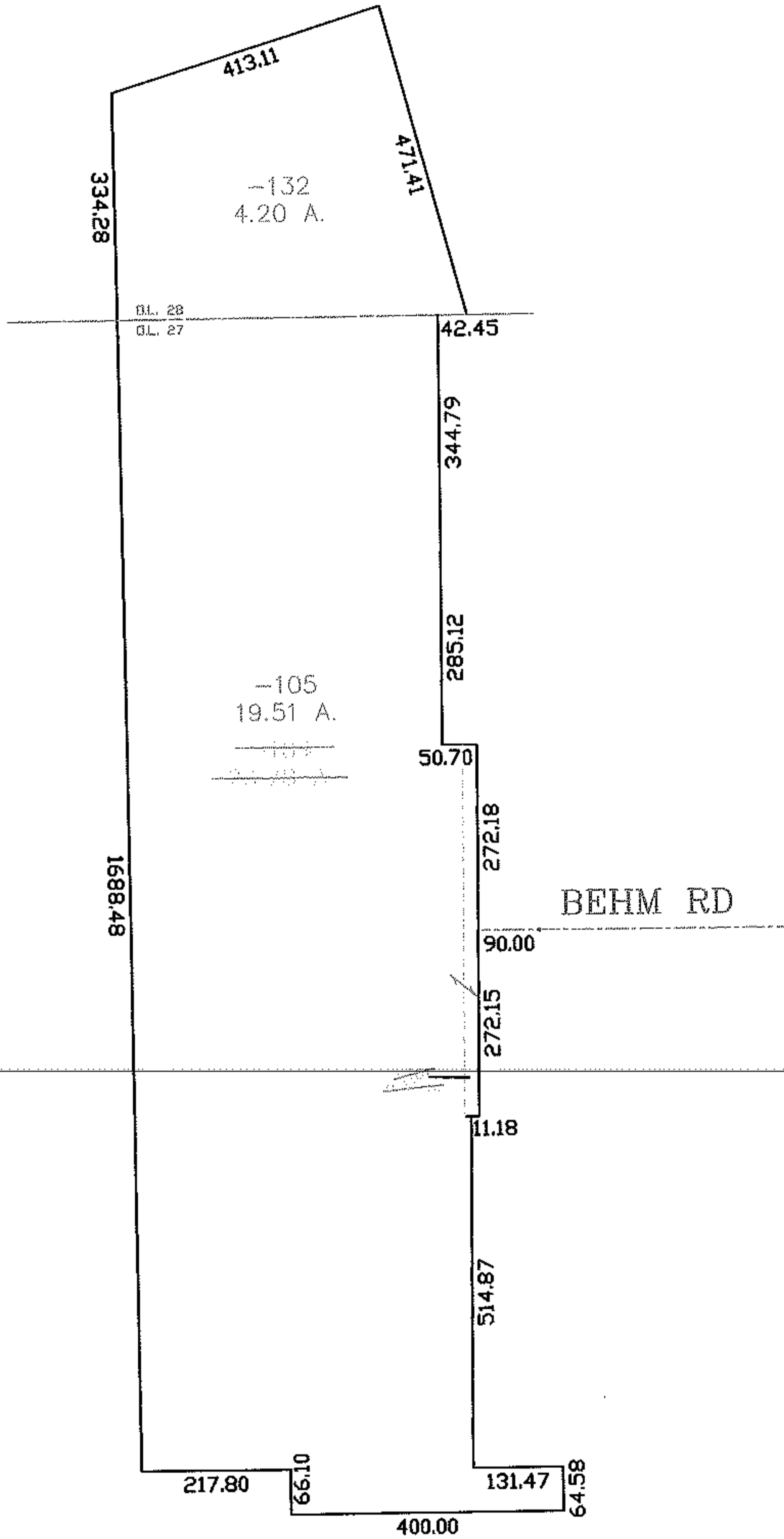
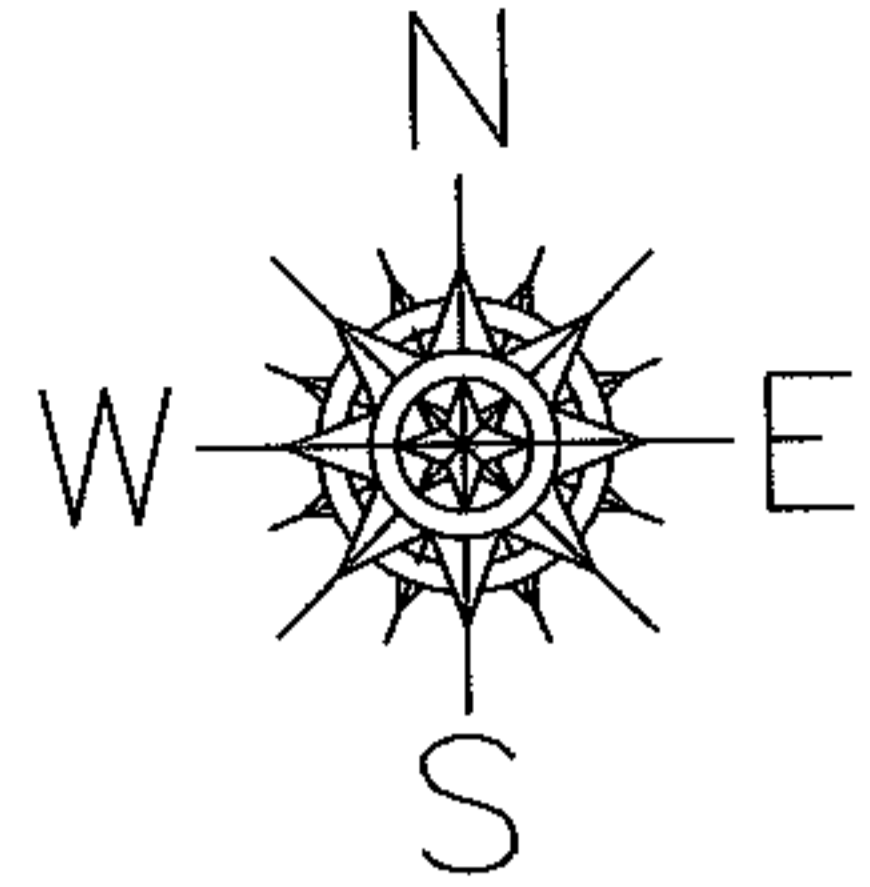
RASTER

PARENT PARCEL: 07-00-027-104-104, 07-00-027-101-101

CHILD PARCEL: 07-00-027-101-105, 07-00-028-103-132

STARTING POINT: CL OF BEHM RD

06-01273-C



SPLITS/DEEDS PROCESSED
LORAIN COUNTY TAX MAP DEPARTMENT
 226 MIDDLE AVE. ELYRIA, OHIO

SURVEYED BY: P.A. ROSEBECK
 CLOSURE: 1:10,000
 MAP PAGE(S): 07-00-027-A
 APPROVED BY: DRH DATE: 2/13/2006
 SCALE: 1" = 300' PRIOR INSTRUMENT: 19990626023