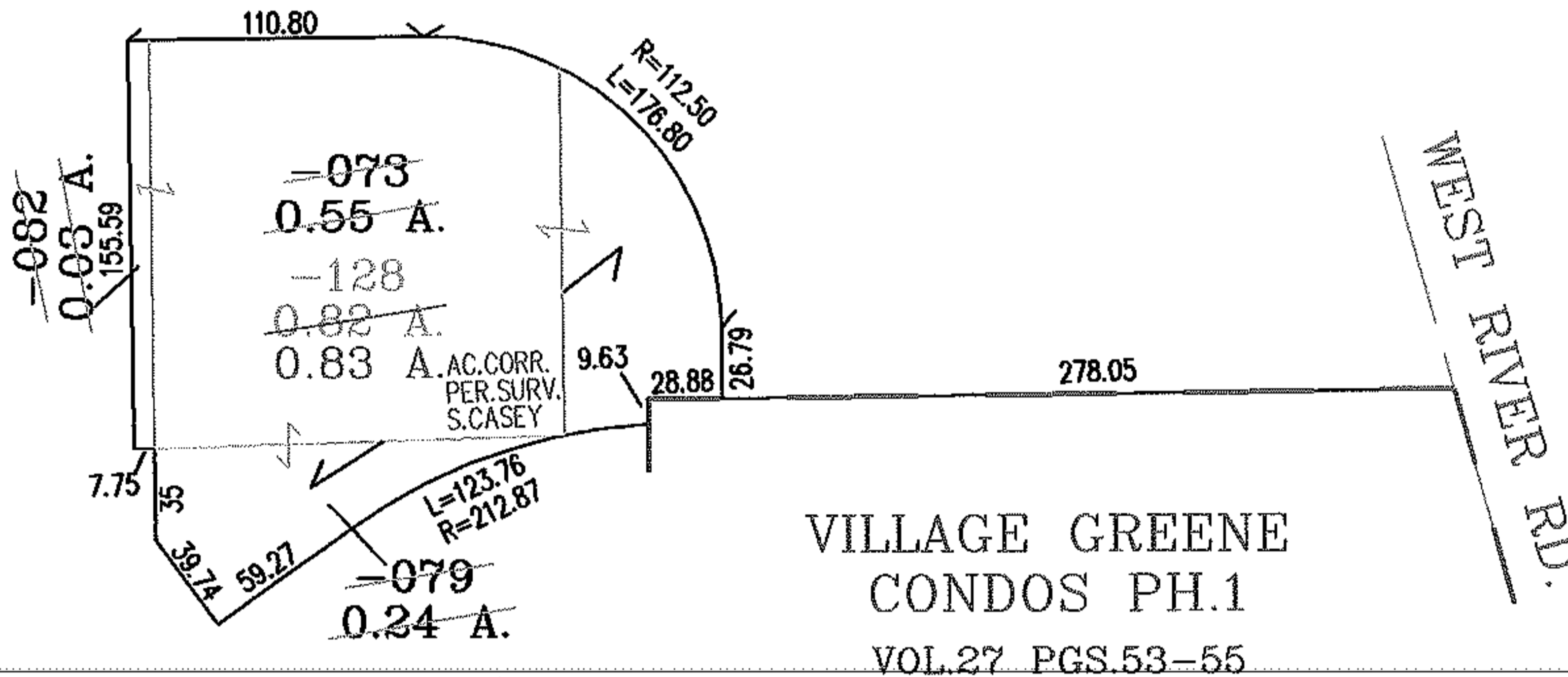
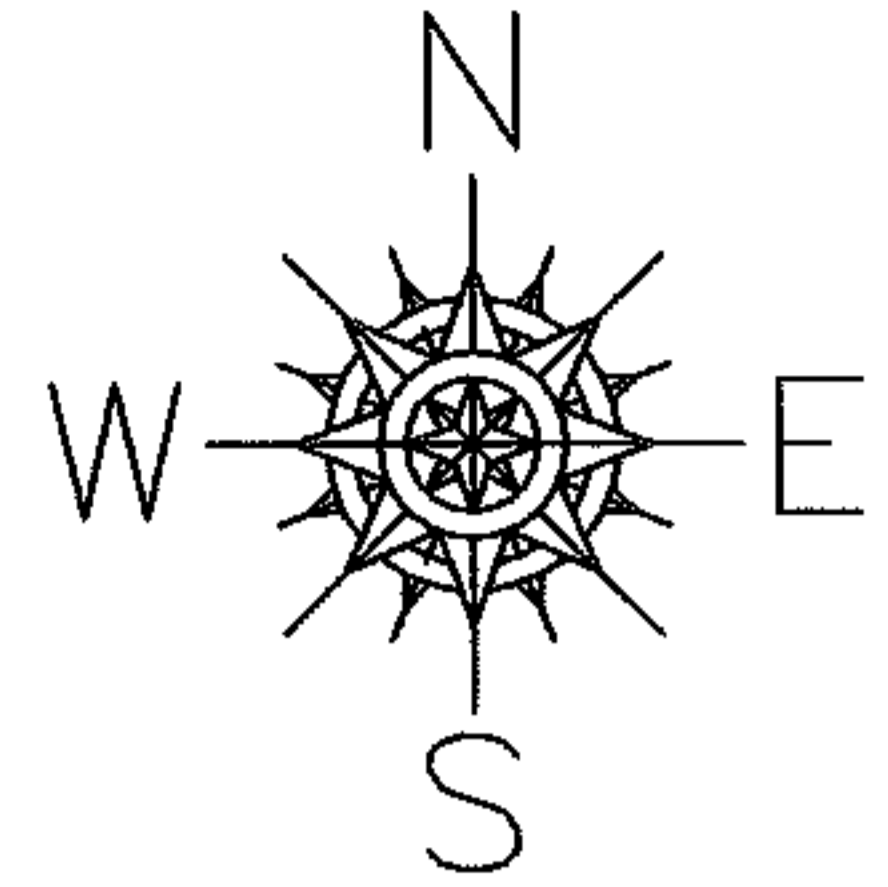


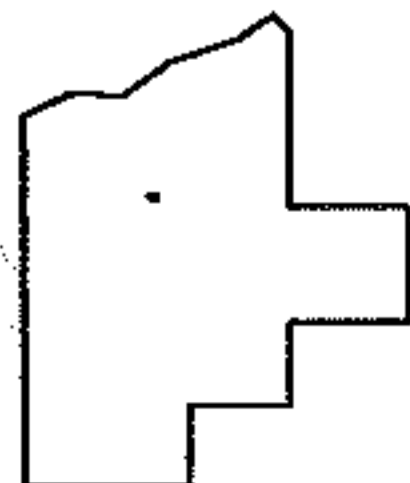
MASTER

PARENT PARCEL: 06-24-030-000-073,-079,-082  
CHILD PARCEL: 06-24-030-000-128  
STARTING POINT: INTERSECTION OF C/L OF WEST RIVER RD. AND NORTH LINE OF  
VILLAGE GREENE CONDOS PH. 1

06-01272-D



VILLAGE GREENE  
CONDOS PH.1  
VOL. 27 PGS. 53-55



**SPLITS/DEEDS PROCESSED**  
LORAIN COUNTY TAX MAP DEPARTMENT  
226 MIDDLE AVE. ELYRIA, OHIO

SURVEYED BY: SCOTT CASEY  
CLOSURE: .01:10.000  
MAP PAGE(S): 06-24  
APPROVED BY: RRM DATE: 2-16-06  
SCALE: 1" = 100' PRIOR INSTRUMENT: 20020838749