

RASTER

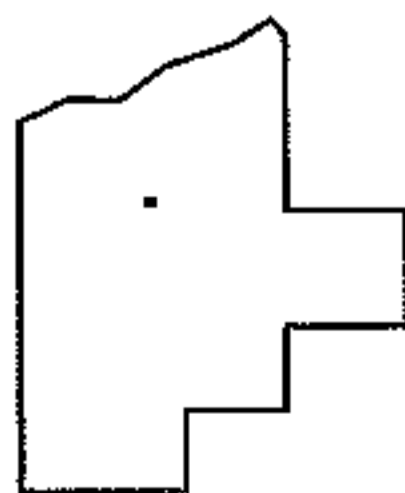
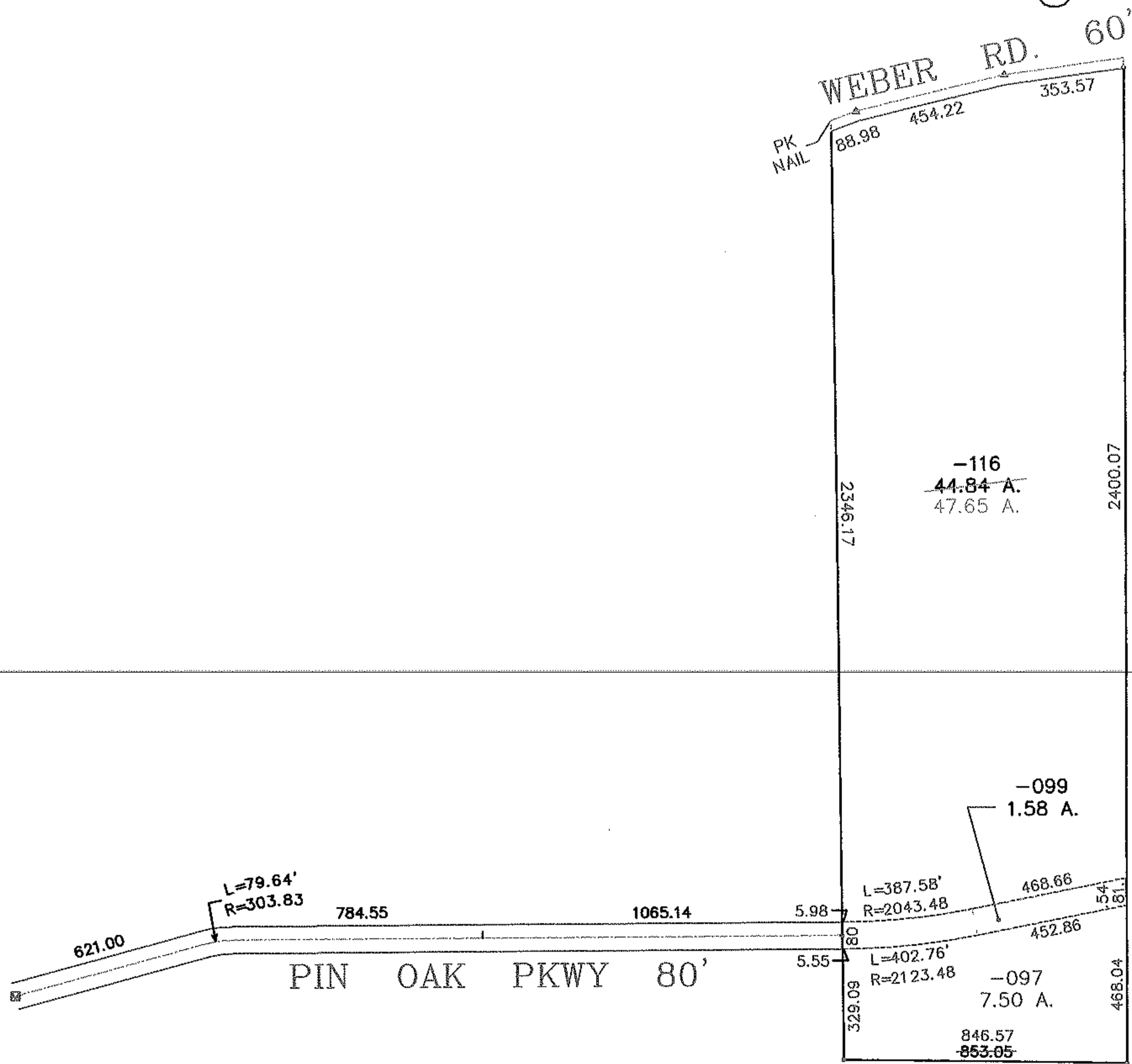
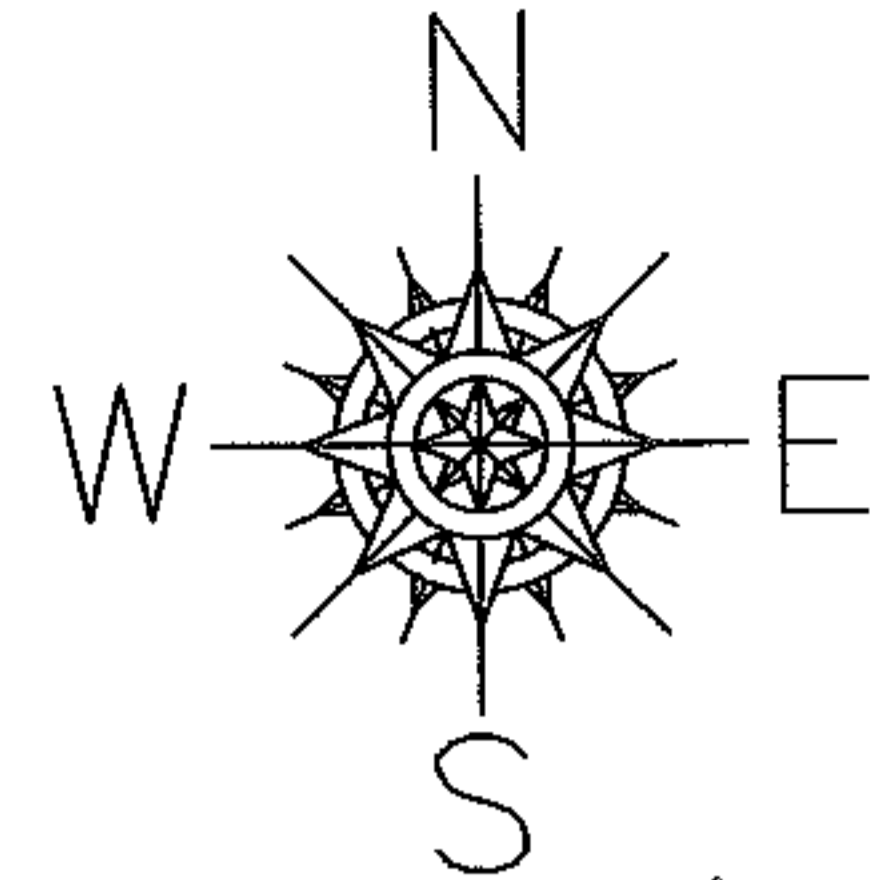
PARENT PARCEL: 04-00-008-104-116

06-01261-C

CHILD PARCEL: --SAME--

STARTING POINT: MON. BOX, CL OF PIN OAK PKWY. STA. 10+20.00

AC. CORR.  
PER SURVEY  
TERIN J. KAMINSKI



**SPLITS/DEEDS PROCESSED**  
LORAIN COUNTY TAX MAP DEPARTMENT  
226 MIDDLE AVE. ELYRIA, OHIO

SURVEYED BY: TERIN J. KAMINSKI  
CLOSURE: 0.08 : 10.000  
MAP PAGE(S): 4-B  
APPROVED BY: DRH DATE: 1/25/2006  
SCALE: 1" = 500 PRIOR INSTRUMENT: DV 768/649