

RASTER

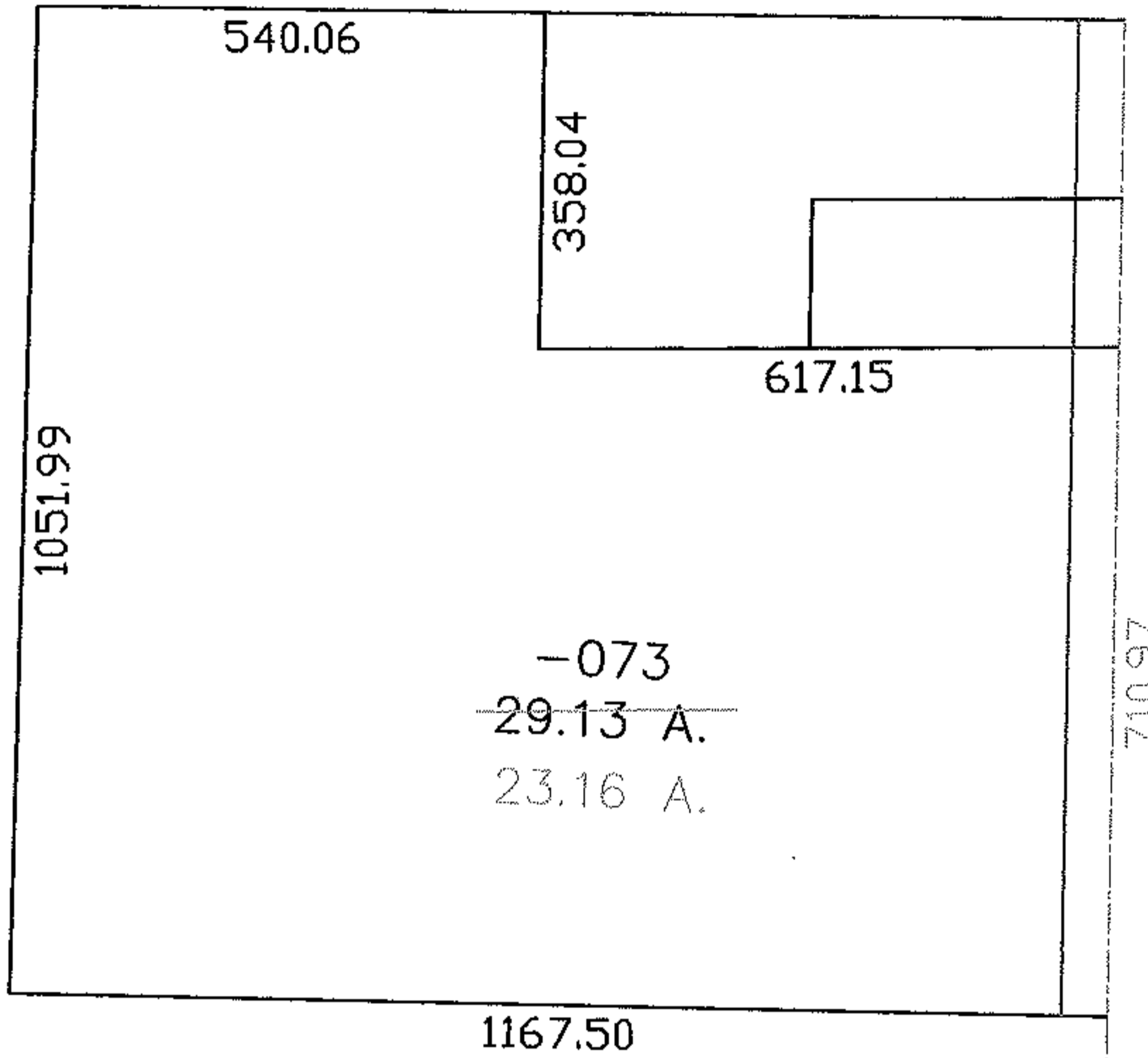
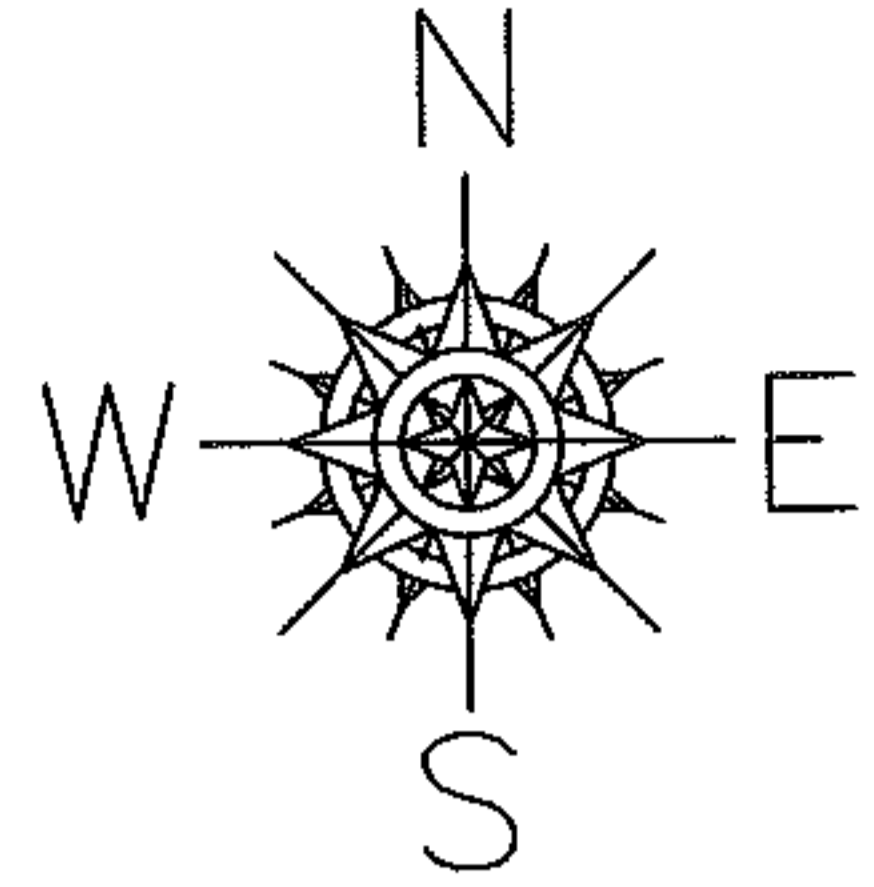
PARENT PARCEL: 18-00-026-101-073

CHILD PARCEL: --SAME--

STARTING POINT: INT SOUTH MAIN ST AND JONES RD

06-01260-C

AC. CORR. PER SURVEY  
THOMAS M. SNEZEK

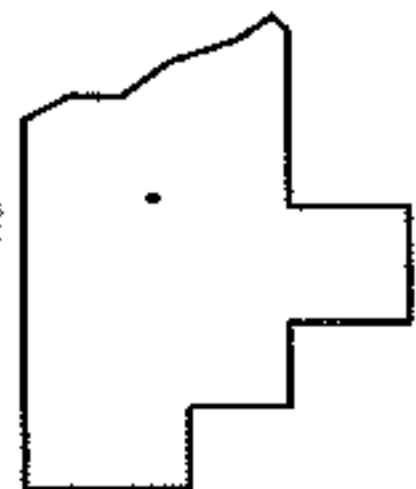


710.97

SOUTH MAIN ST.

896.19

JONES RD.



**SPLITS/DEEDS PROCESSED**

LORAIN COUNTY TAX MAP DEPARTMENT  
226 MIDDLE AVE. ELYRIA, OHIO

SURVEYED BY: THOMAS M. SNEZEK

CLOSURE: 1:10,000

MAP PAGE(S): 18-00-026-B

APPROVED BY: DRH DATE: 1/12/2005

SCALE: 1" = 300 PRIOR INSTRUMENT: DV1064/381