

RASTER

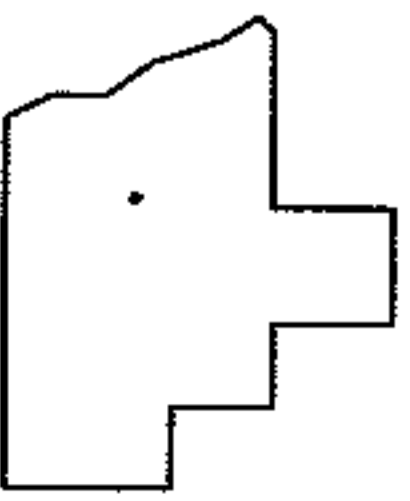
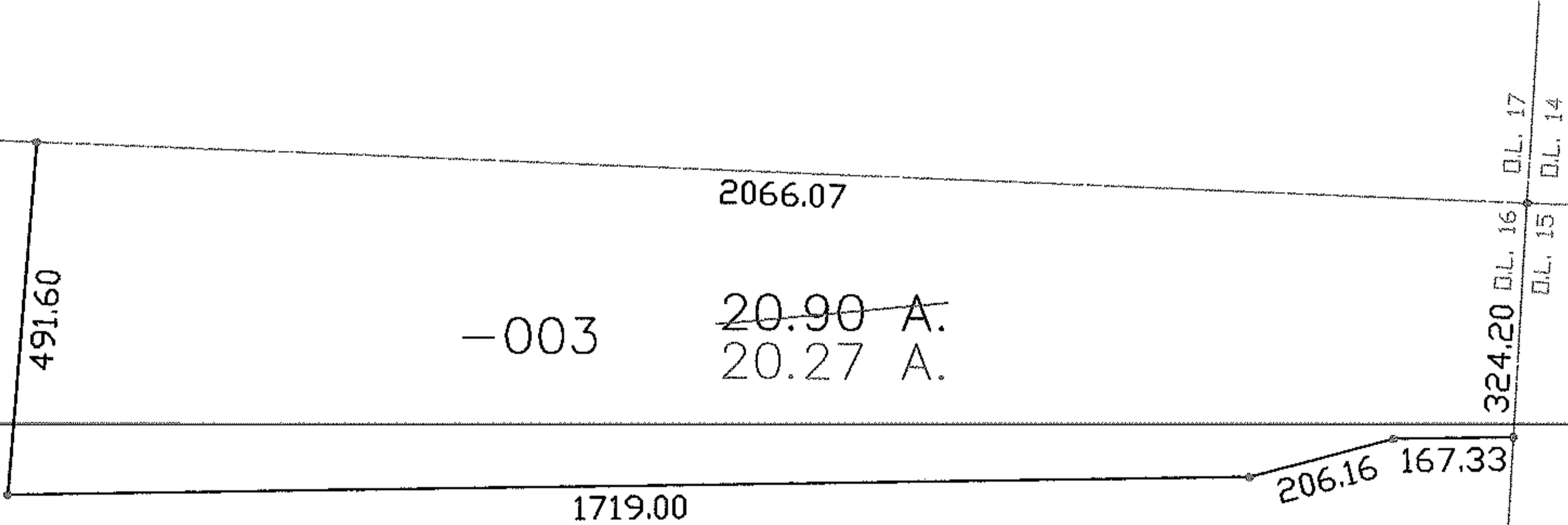
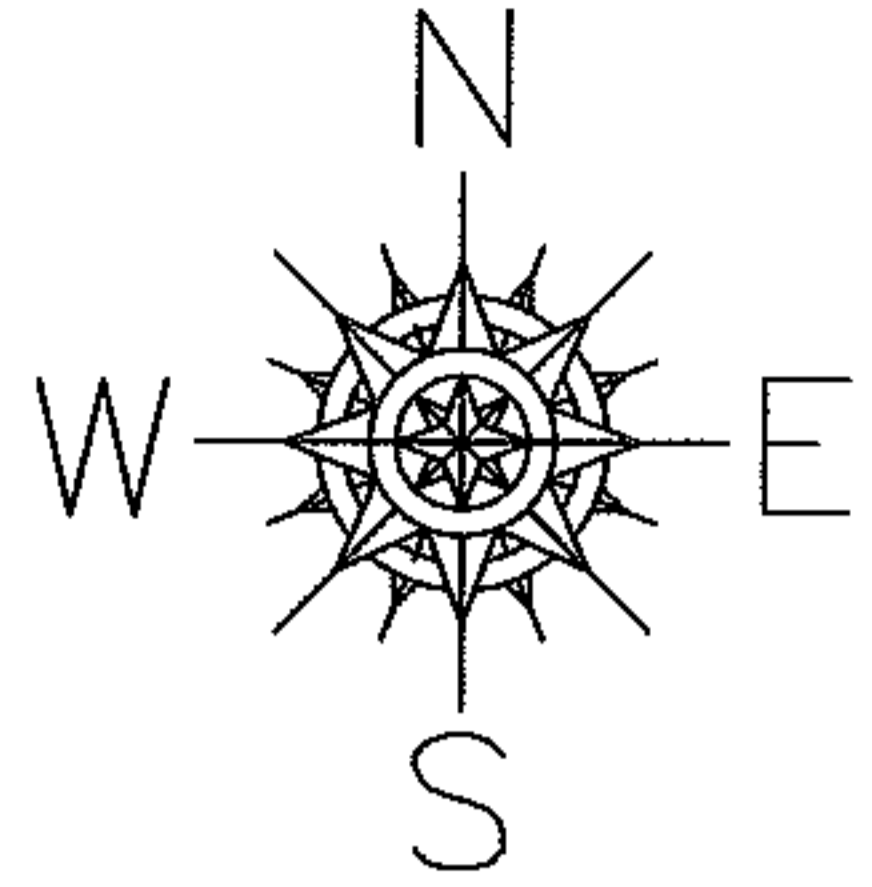
PARENT PARCEL: 06-22-016-000-003

CHILD PARCEL: --SAME--

STARTING POINT: NE CORNER OF O.L. 16

05-01256-A

AC. CORR.
PER SURVEY
THOMAS A. SIMON



SPLITS/DEEDS PROCESSED
LORAIN COUNTY TAX MAP DEPARTMENT
226 MIDDLE AVE. ELYRIA, OHIO

SURVEYED BY: THOMAS A. SIMON
CLOSURE: 1:10,000
MAP PAGE(S): 6-08
APPROVED BY: DRH DATE: 12/30/2005
SCALE: 1" = 300' PRIOR INSTRUMENT: