

RASTER

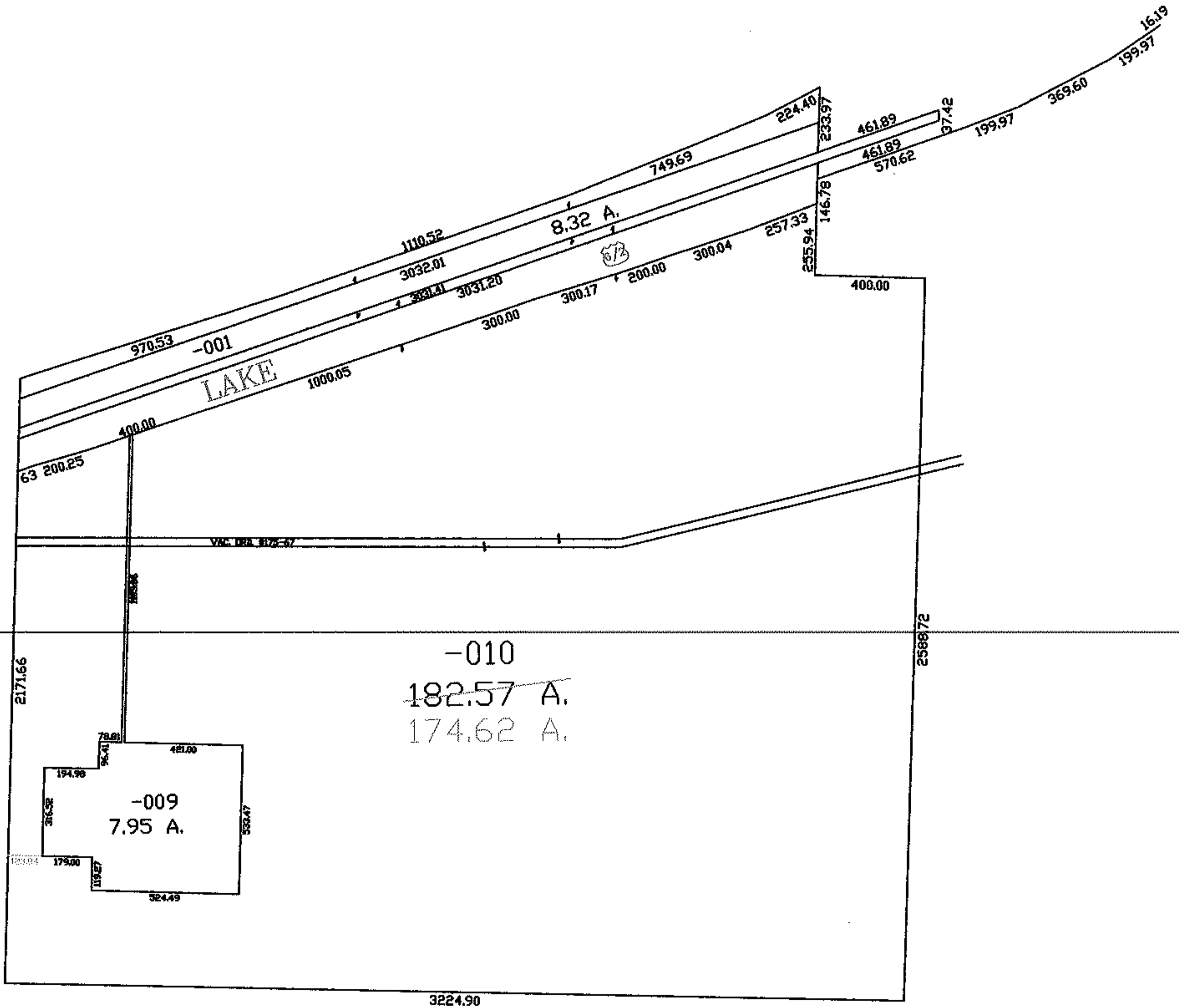
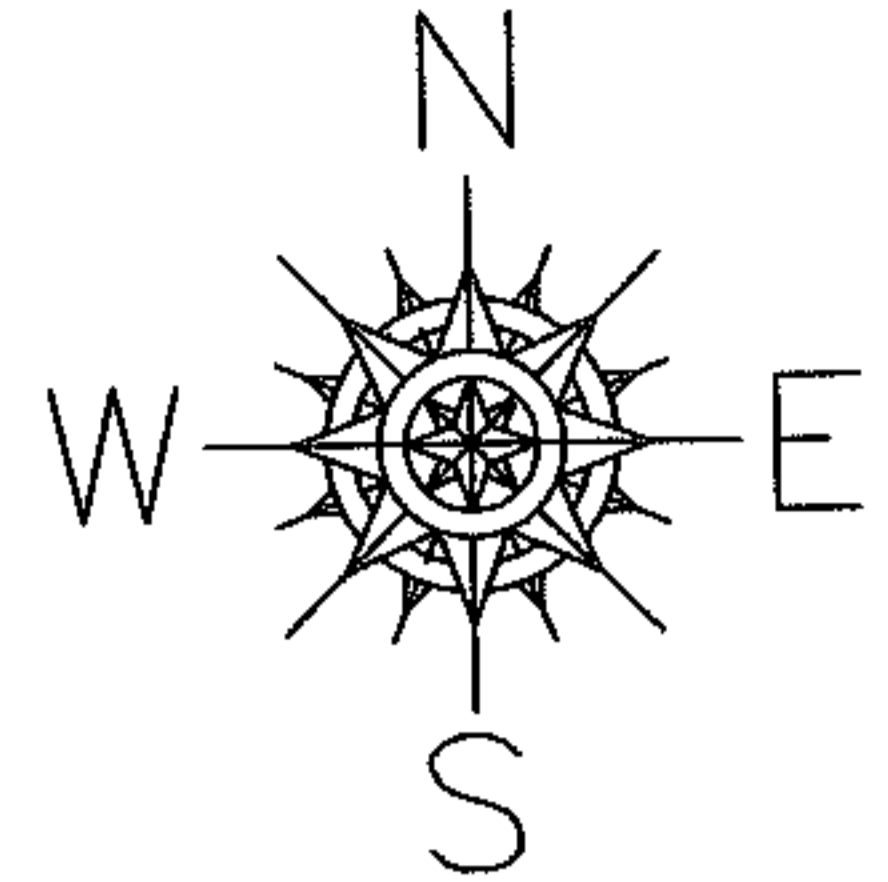
PARENT PARCEL: 02-03-003-000-001

CHILD PARCEL: --SAME--

STARTING POINT:

05-01241-D

AC. CORR.
PER SURVEY
C. HIRZEL



SPLITS/DEEDS PROCESSED

LORAIN COUNTY TAX MAP DEPARTMENT
226 MIDDLE AVE. ELYRIA, OHIO

SURVEYED BY: CHRISTOPHER M. HIRZEL
 CLOSURE: 1:10,000
 MAP PAGE(S): 2-E
 APPROVED BY: DRH DATE: 12/9/2005
 SCALE: 1" = 600' PRIOR INSTRUMENT: