

RASTER

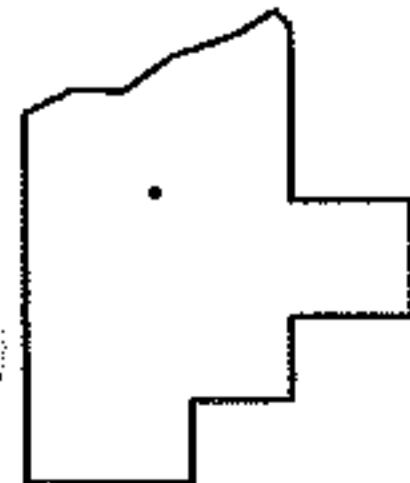
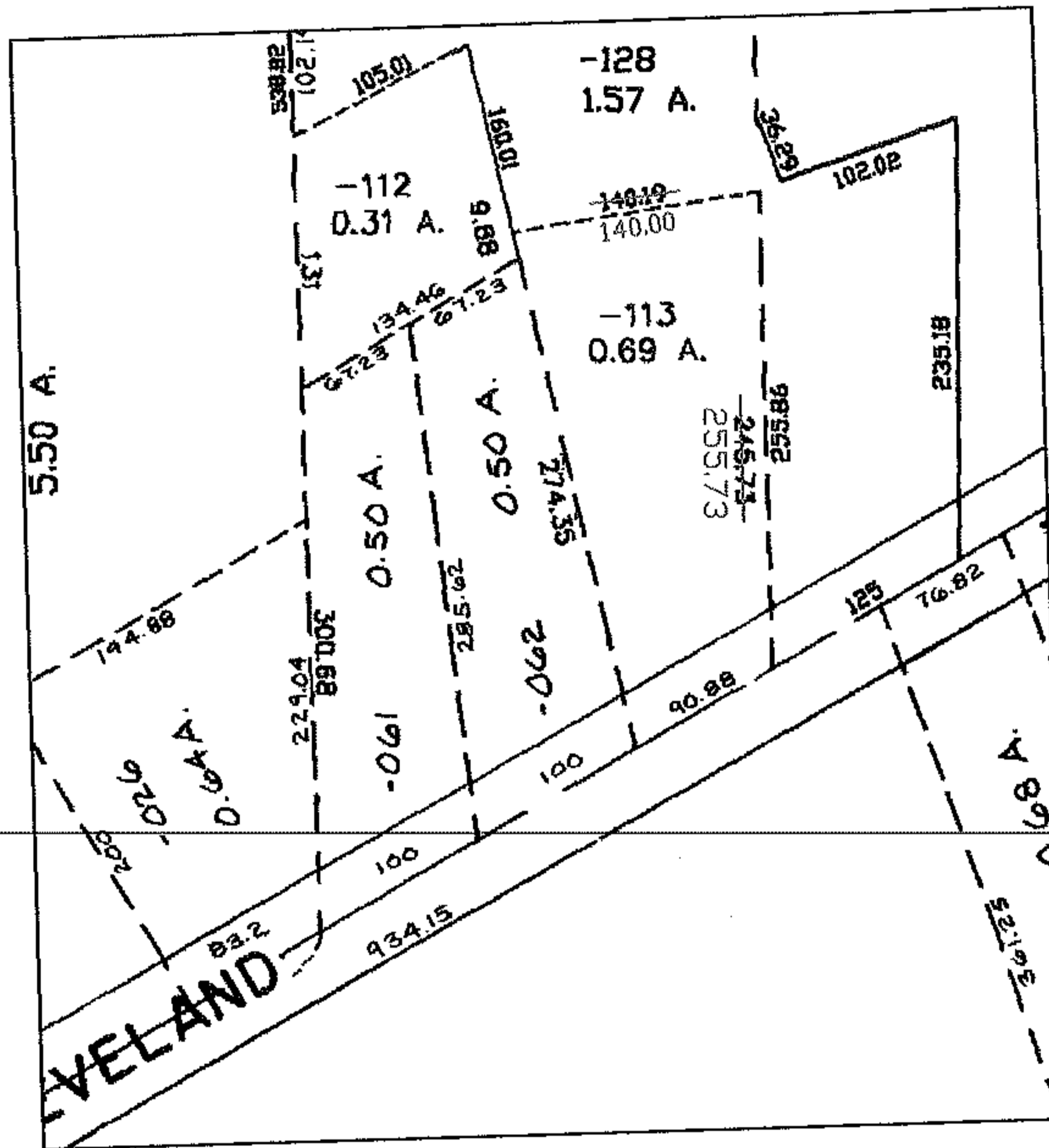
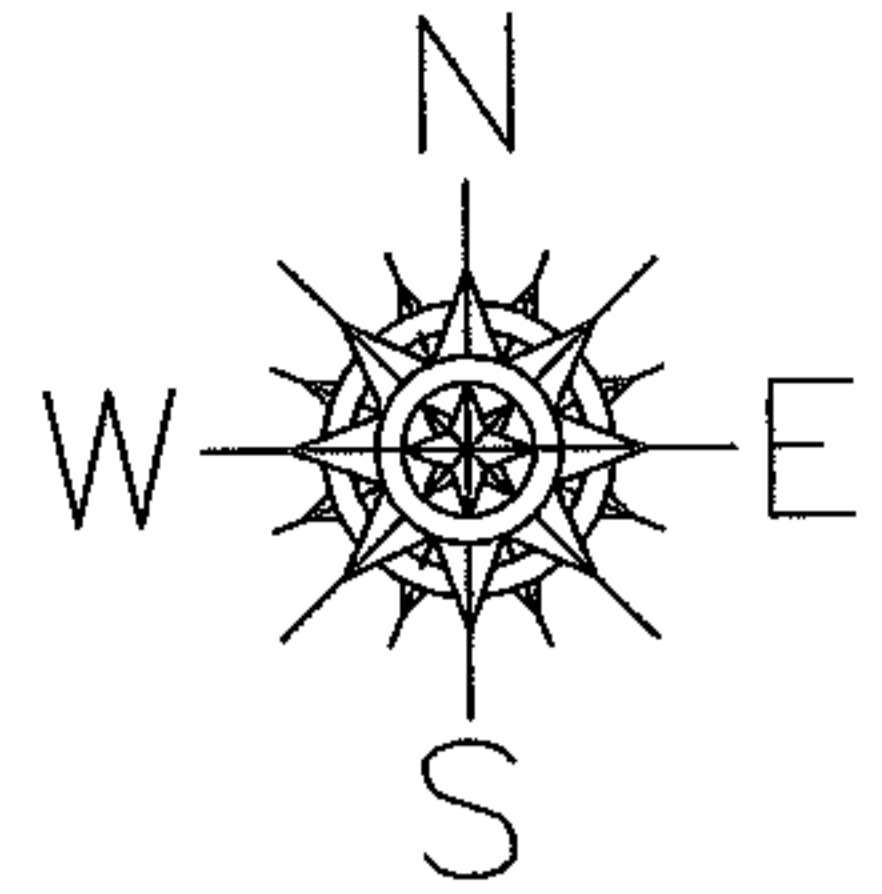
PARENT PARCEL: 11-00-070-000-113

CHILD PARCEL: --SAME--

STARTING POINT:

05-01227-D

MAP CORRECTION



SPLITS/DEEDS PROCESSED
LORAIN COUNTY TAX MAP DEPARTMENT
 226 MIDDLE AVE. ELYRIA, OHIO

SURVEYED BY: DANE HAPONEK
 CLOSURE: 1:10,000
 MAP PAGE(S): 11-00-070-B
 APPROVED BY: DRH DATE: 11/2/2005
 SCALE: 1" = 200' PRIOR INSTRUMENT: