

RASTER

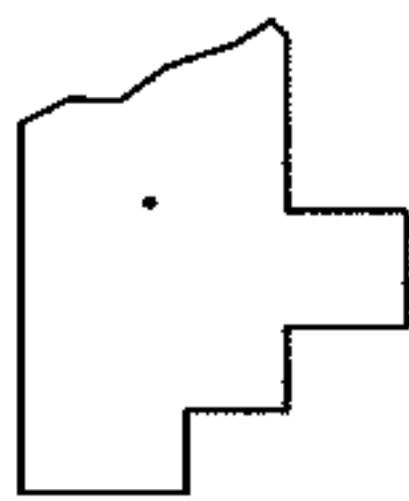
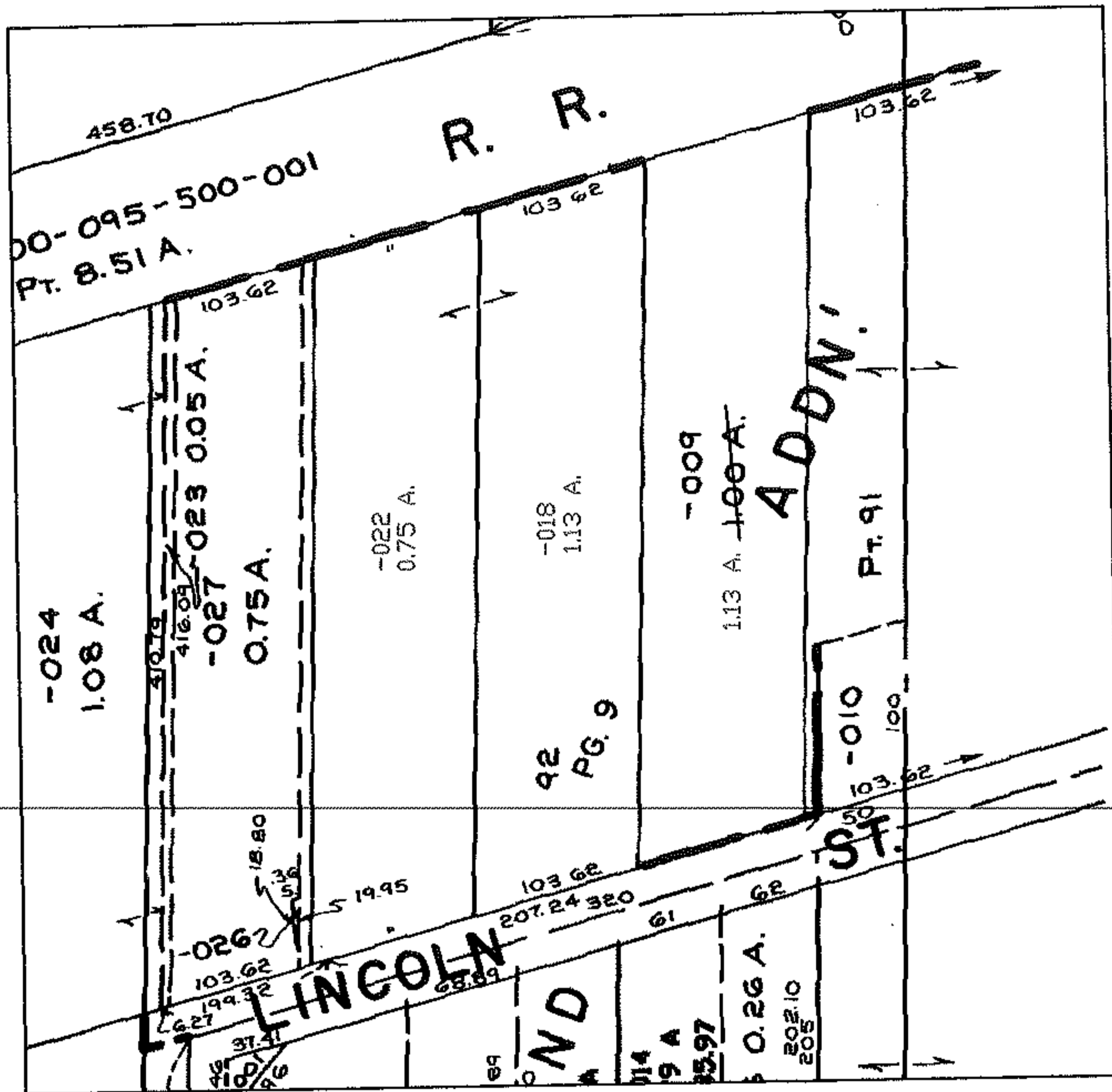
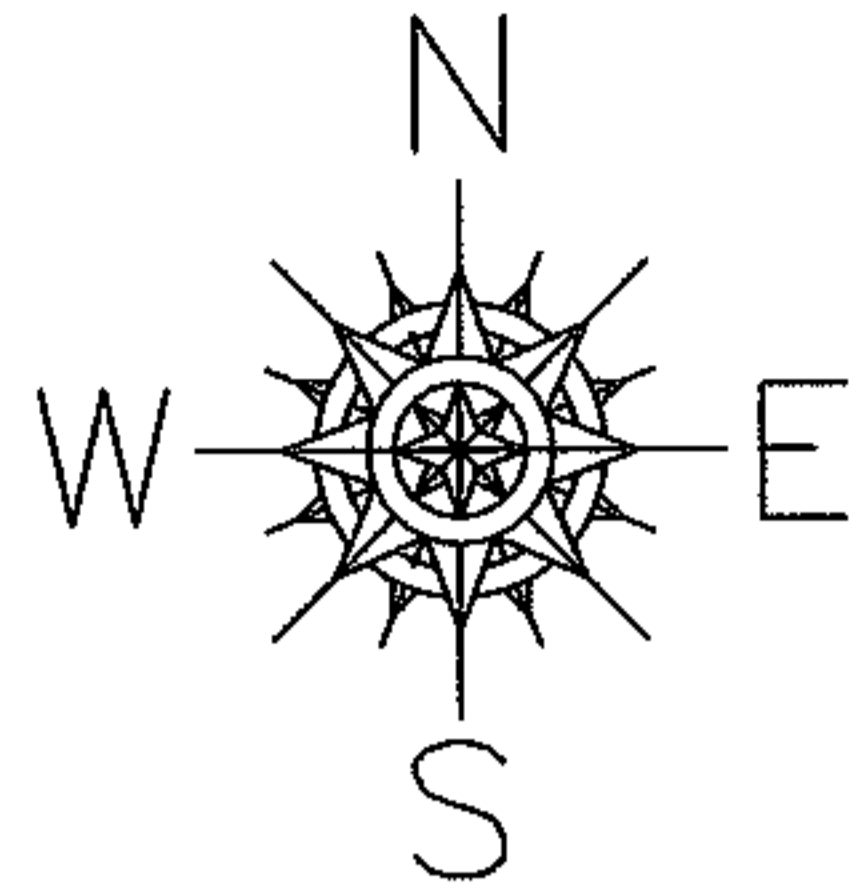
PARENT PARCEL: 05-00-094-102-018, -022, -009

CHILD PARCEL: --SAME--

STARTING POINT:

05-01222-A

MAP CORRECTION PARCELS ALREADY IN REGISTER



SPLITS/DEEDS PROCESSED
LORAIN COUNTY TAX MAP DEPARTMENT
226 MIDDLE AVE. ELYRIA, OHIO

SURVEYED BY: N/A
CLOSURE: N/A
MAP PAGE(S): 09-00-094-B
APPROVED BY: DRH DATE: 11/2/2005
SCALE: 1" = 200' PRIOR INSTRUMENT: