

RASTER

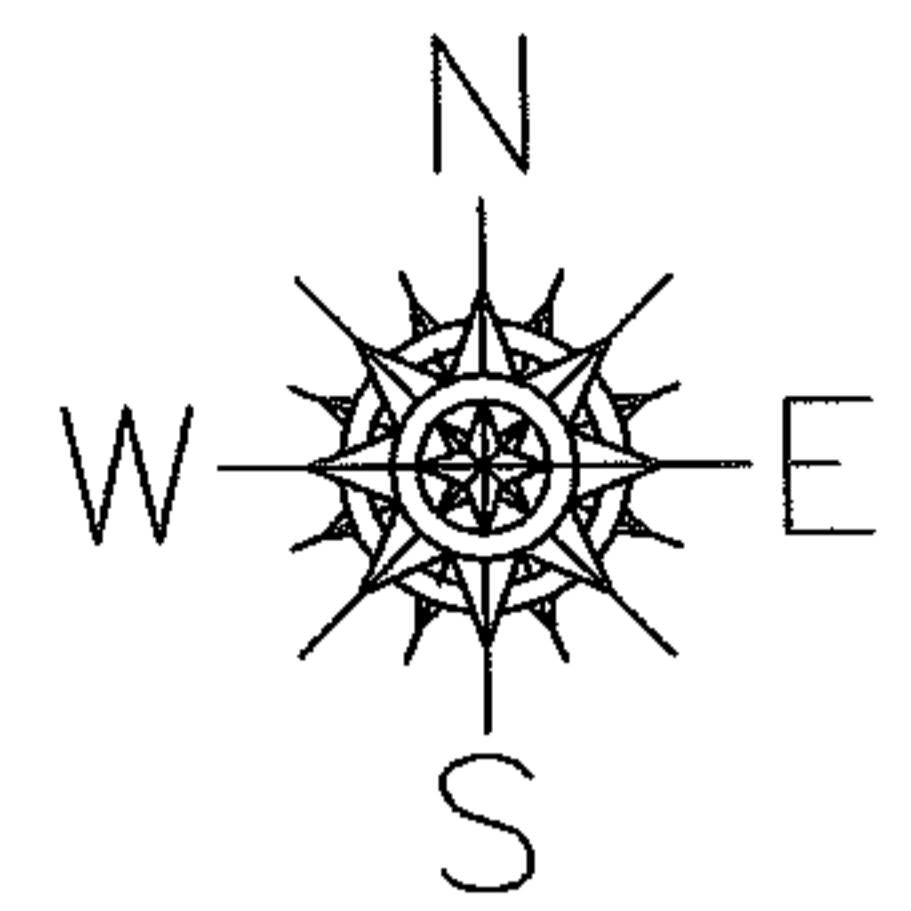
PARENT PARCEL: 16-00-018-103-015

CHILD PARCEL: --SAME--

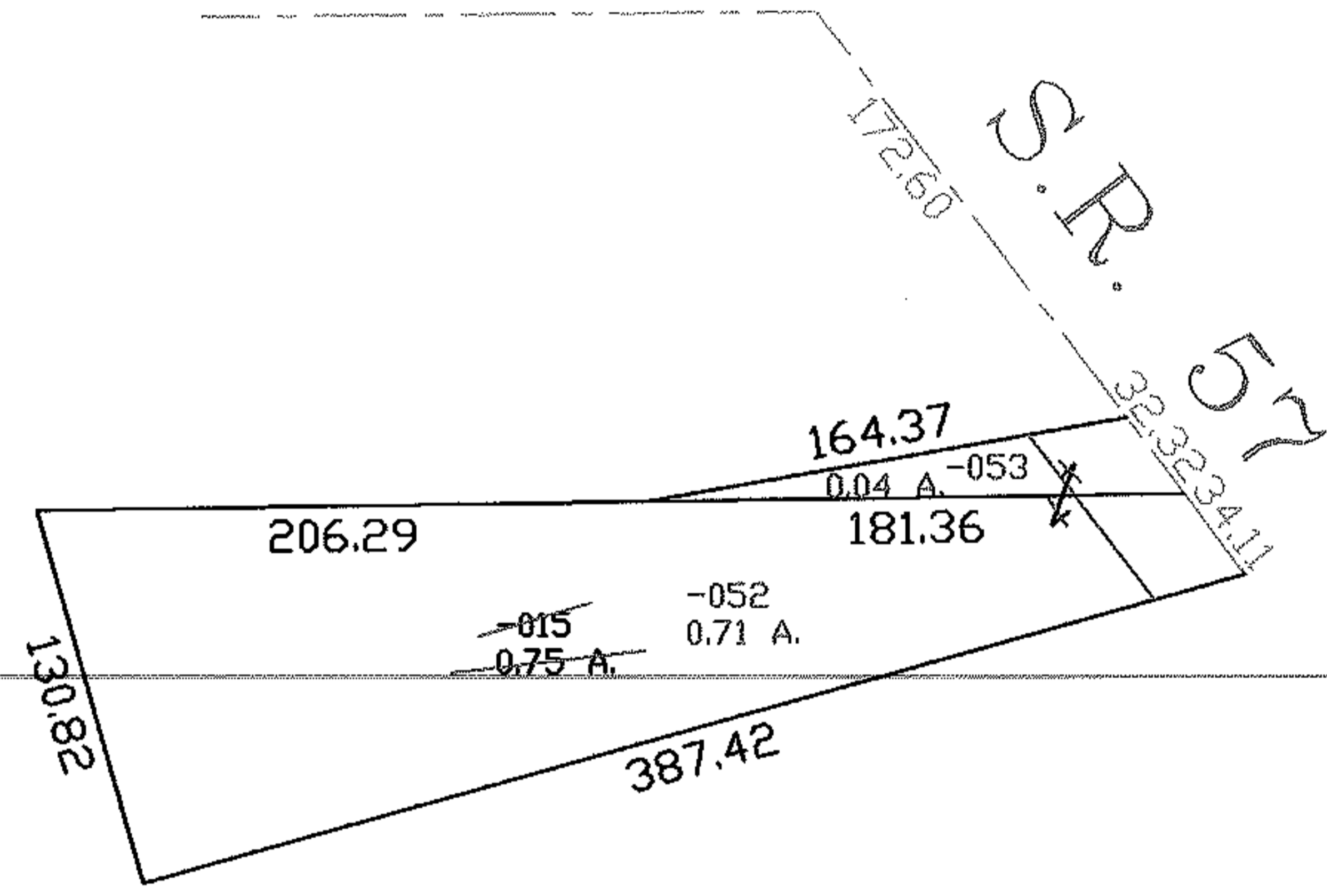
STARTING POINT: INT CL CROOK ST AND S.R. 57

05-01215-U

UNCOMBINATION



CROOK ST.



SPLITS/DEEDS PROCESSED

LORAIN COUNTY TAX MAP DEPARTMENT
226 MIDDLE AVE. ELYRIA, OHIO

SURVEYED BY: N/A
 CLOSURE: N/A
 MAP PAGE(S): 16-00-018-A
 APPROVED BY: DRH DATE: 10/12/2005
 SCALE: 1"= 100 PRIOR INSTRUMENT: 1298/548