

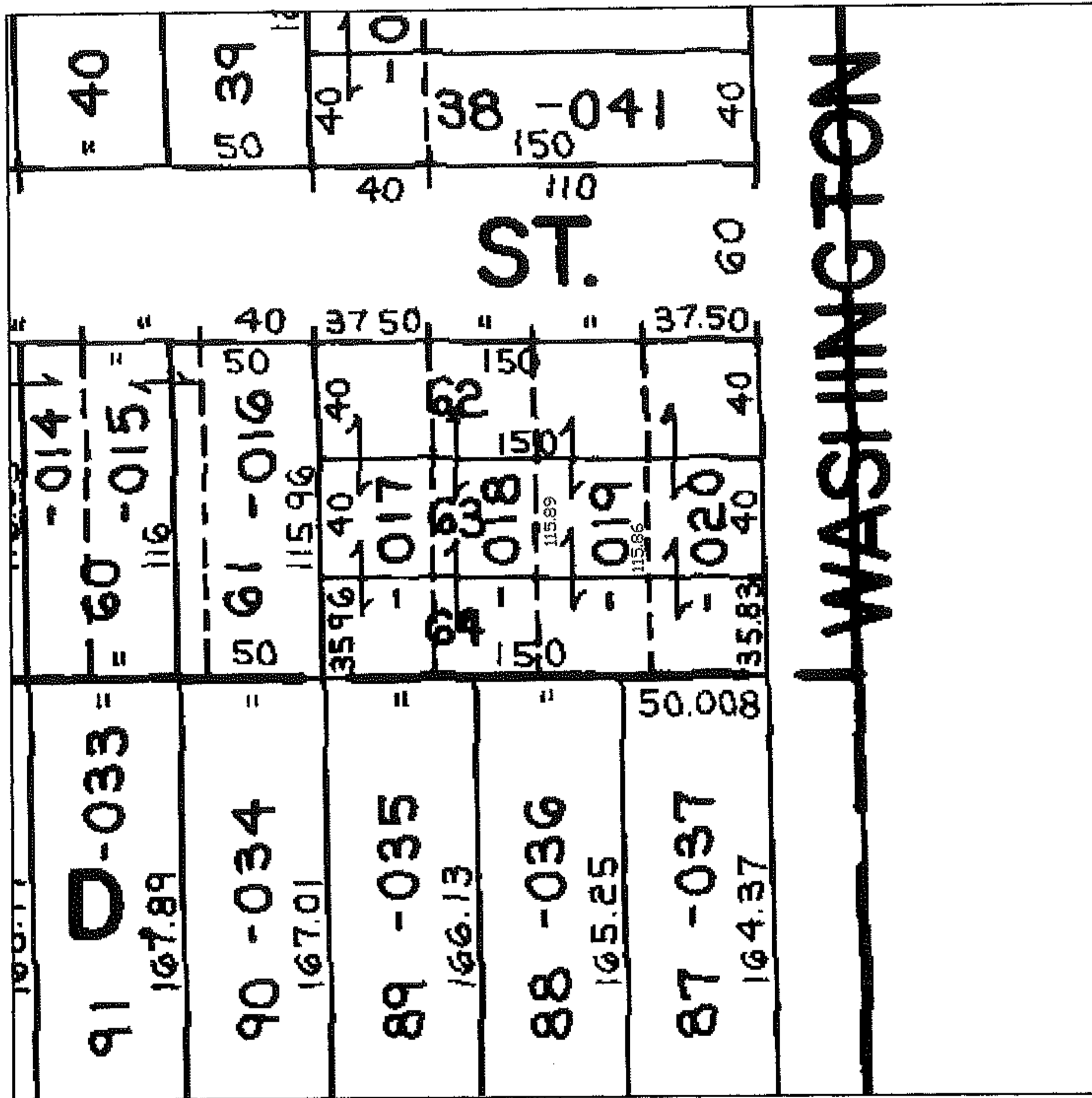
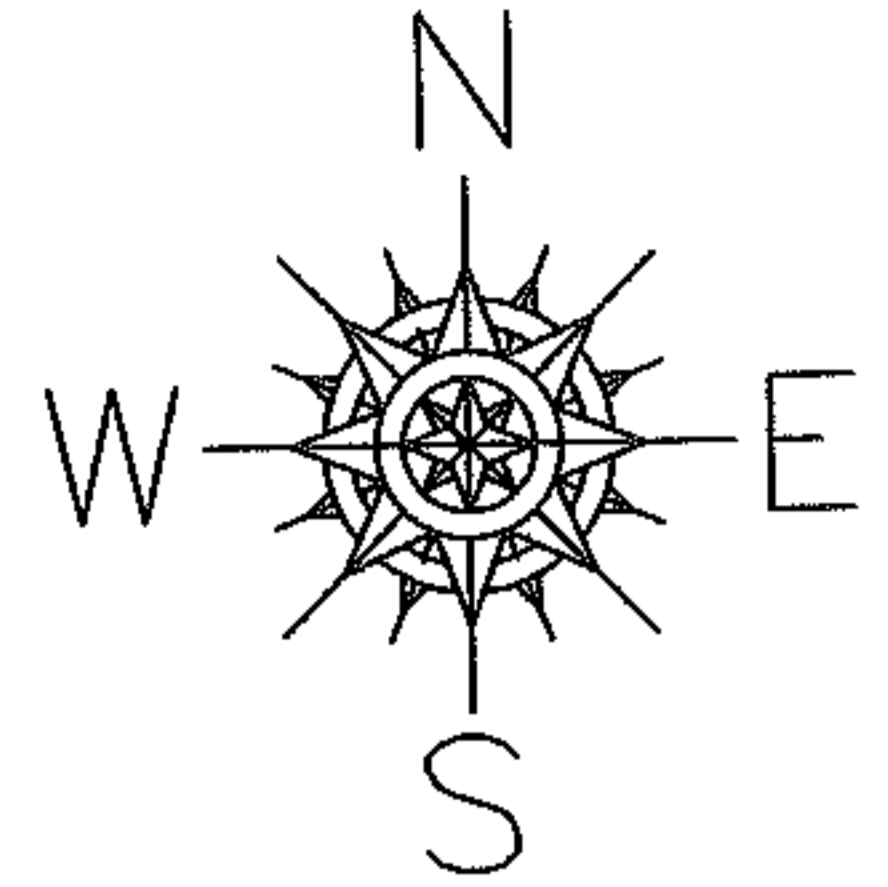
PARENT PARCEL: 02-01-006-145-019

NO. 01197-C

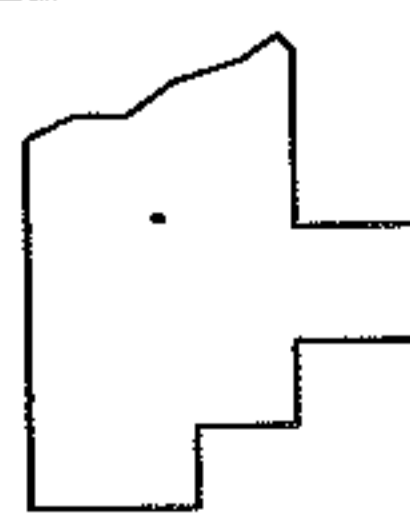
CHILD PARCEL: --SAME--

STARTING POINT:

DEPTH CORR.
PER DEED



WASHINGTON ST.



SPLITS/DEEDS PROCESSED
 LORAIN COUNTY TAX MAP DEPARTMENT
 226 MIDDLE AVE. ELYRIA, OHIO

SURVEYED BY: N/A
 CLOSURE: N/A
 MAP PAGE(S): 02-01-006-C
 APPROVED BY: DRH DATE: 8/29/2005
 SCALE: 1"=100 PRIOR INSTRUMENT: 20050089759