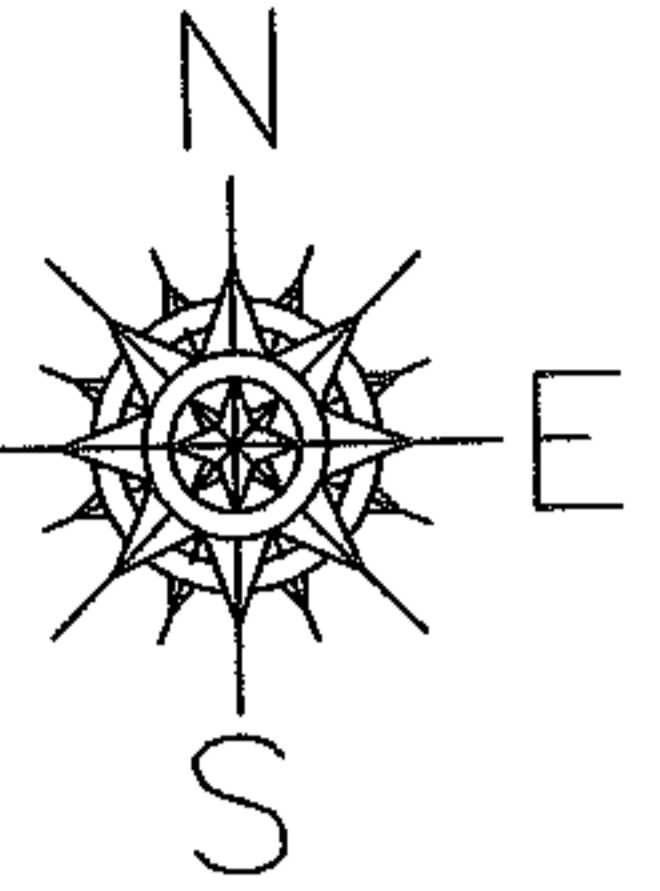
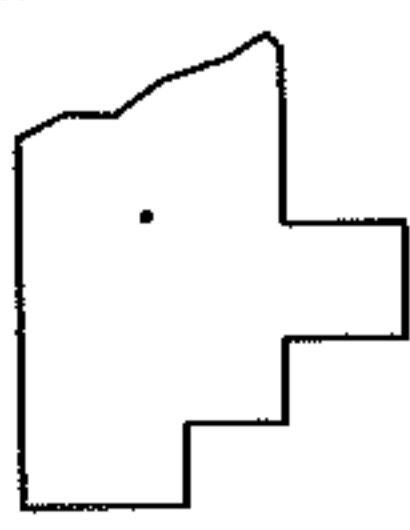
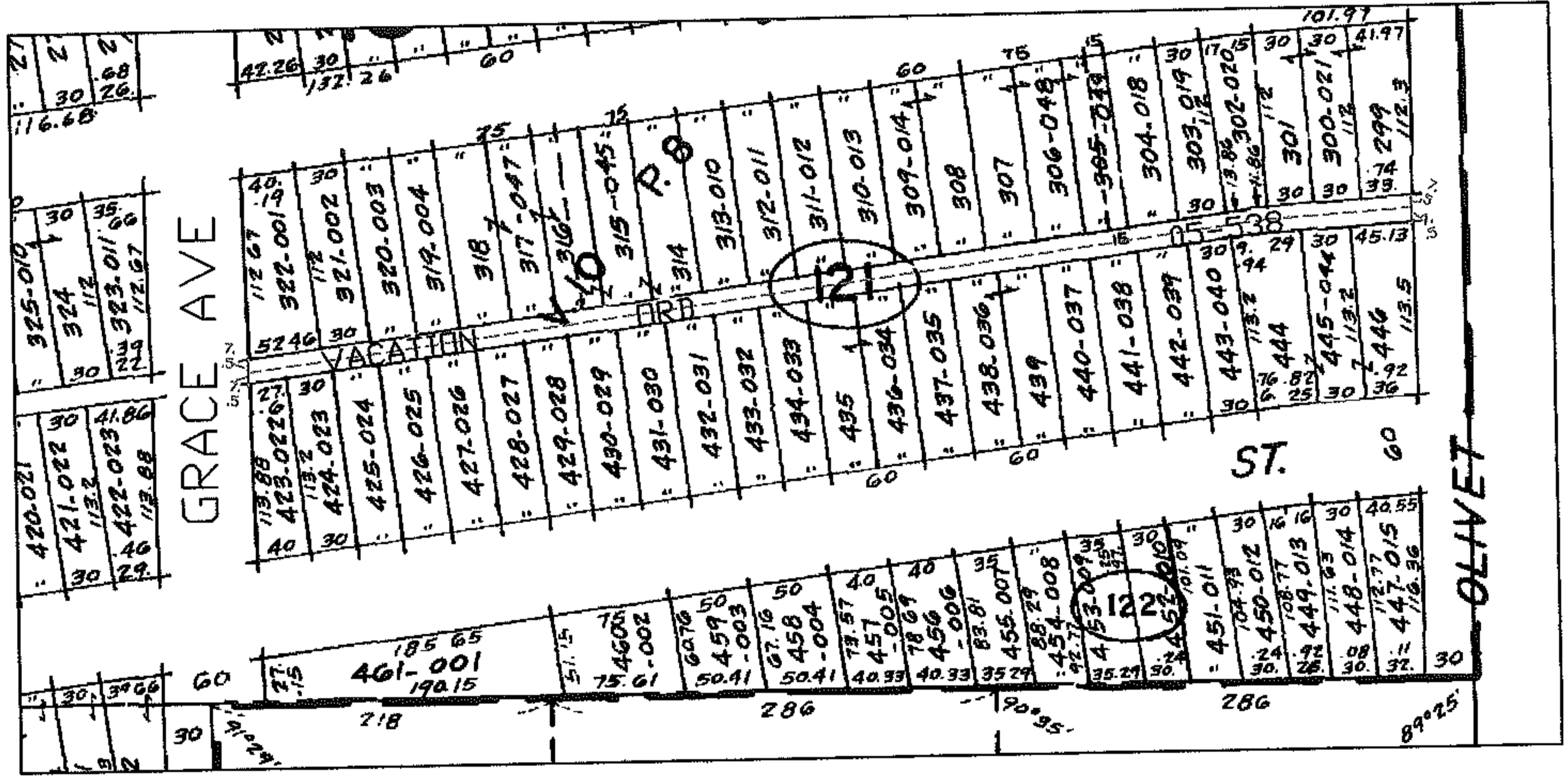


NO. 01185-V

PARENT PARCEL: \_\_\_\_\_  
CHILD PARCEL: \_\_\_\_\_  
STARTING POINT: NW CORNER OF SL 423



# VACATION OF 15' ALLEY W BETWEEN GRACE AVE AND OLIVET AVE



**SPLITS/DEEDS PROCESSED**  
LORAIN COUNTY TAX MAP DEPARTMENT  
226 MIDDLE AVE. ELYRIA, OHIO

SURVEYED BY: \_\_\_\_\_  
CLOSURE: \_\_\_\_\_  
MAP PAGE(S): 6-008  
APPROVED BY: DRH DATE: 8/4/2005  
SCALE: 1" = 200' PRIOR INSTRUMENT: ORD# 05-538