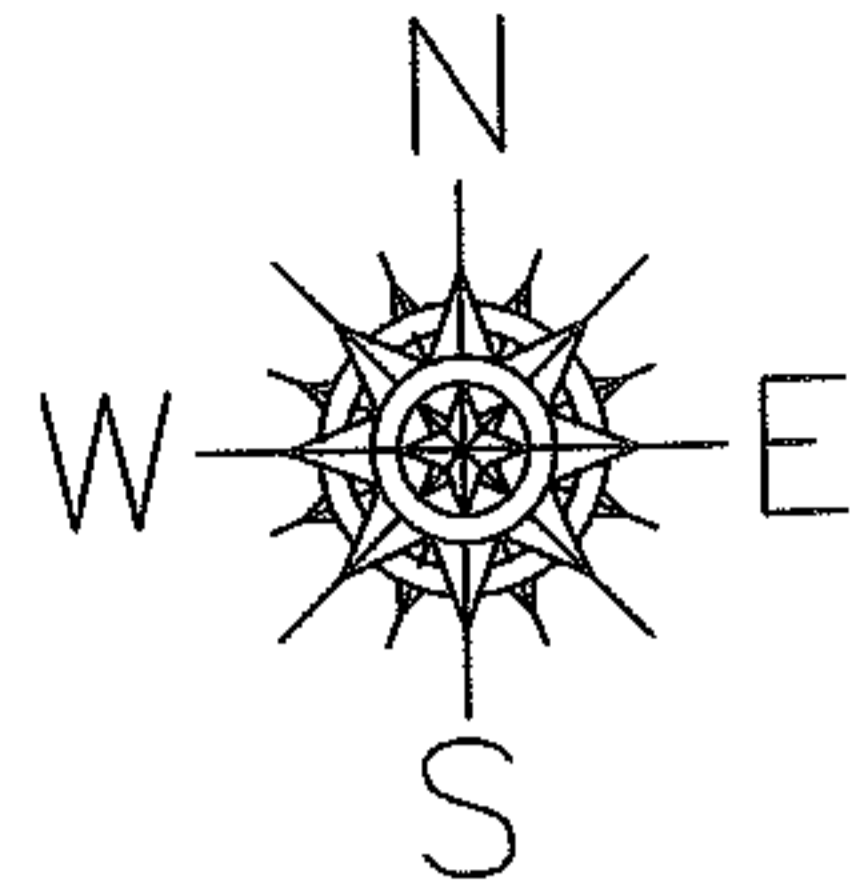
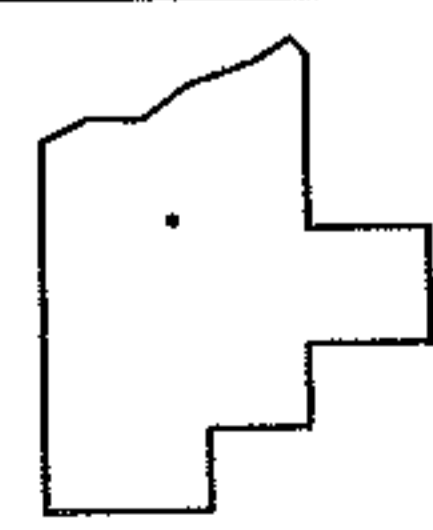
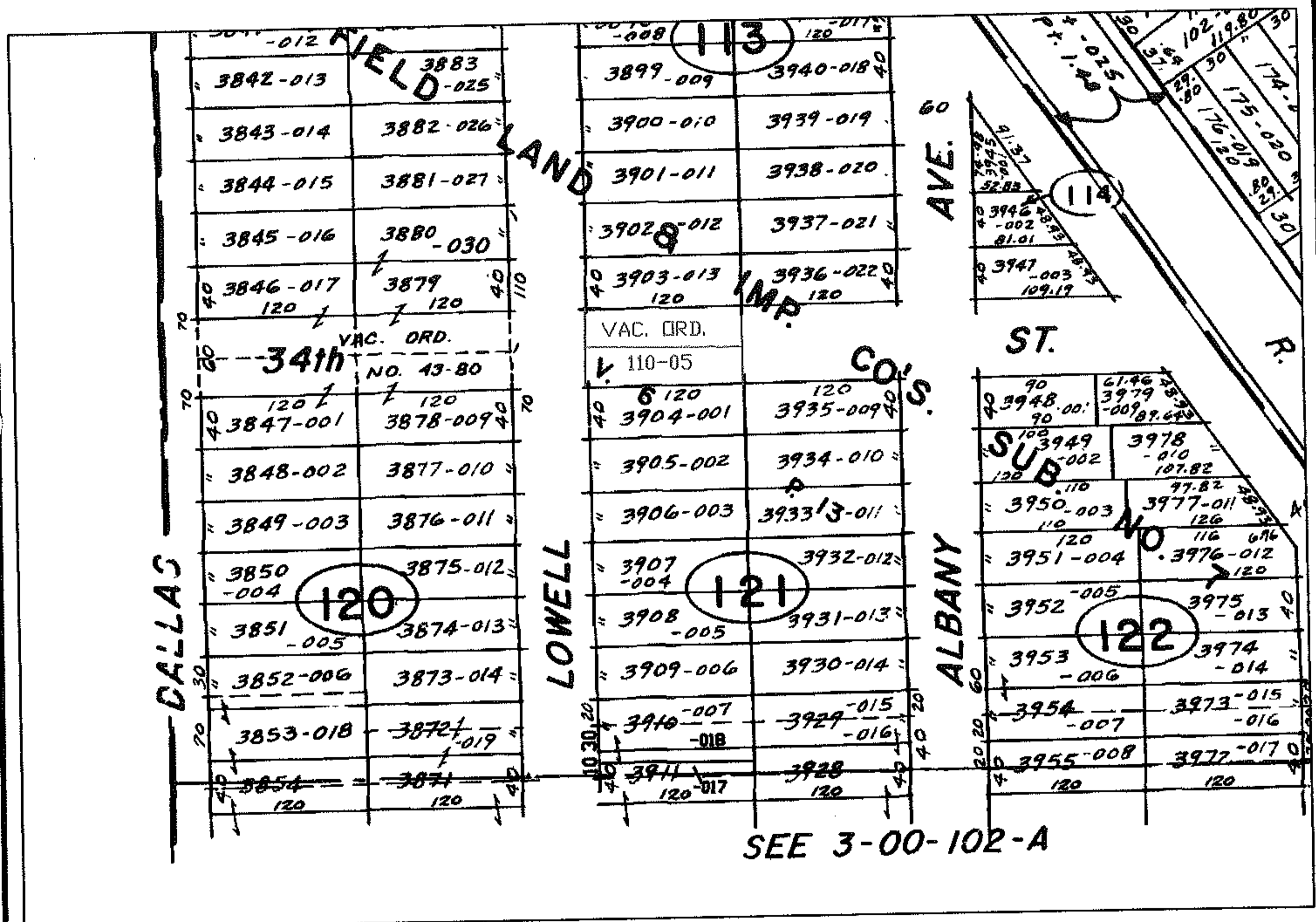


NO. 01184-V

PARENT PARCEL: \_\_\_\_\_  
CHILD PARCEL: \_\_\_\_\_  
STARTING POINT: E 34TH ST FROM E LINE OF LOWELL ST



VACATED 120 FT  
PORTION OF E 34TH ST



**SPLITS/DEEDS PROCESSED**  
LORAIN COUNTY TAX MAP DEPARTMENT  
226 MIDDLE AVE. ELYRIA, OHIO

SURVEYED BY: \_\_\_\_\_  
CLOSURE: \_\_\_\_\_  
MAP PAGE(S): 03-00-097-A  
APPROVED BY: DRH DATE: 8/4/2005  
SCALE: 1" = 200' PRIOR INSTRUMENT: ORD #110-05