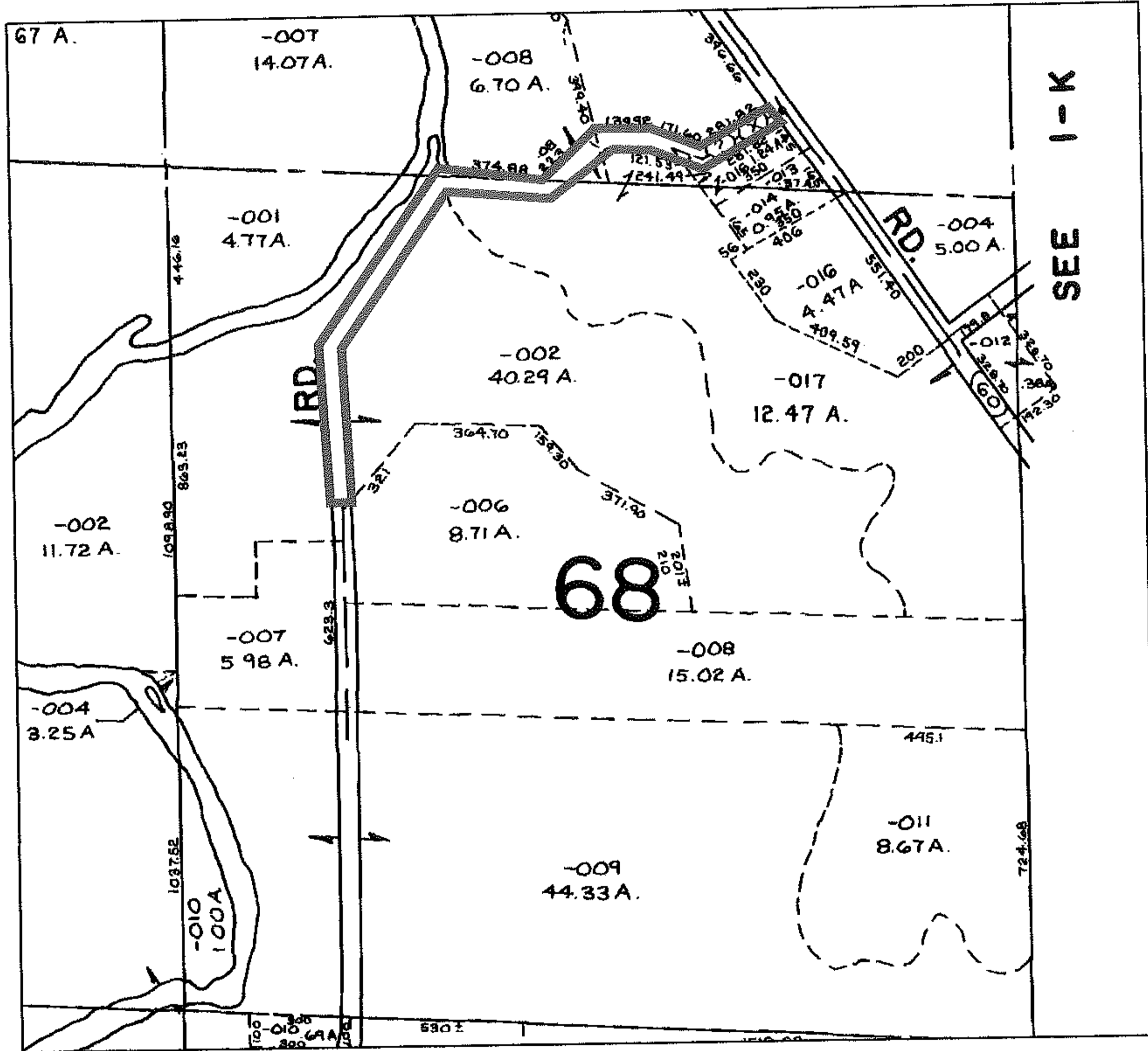
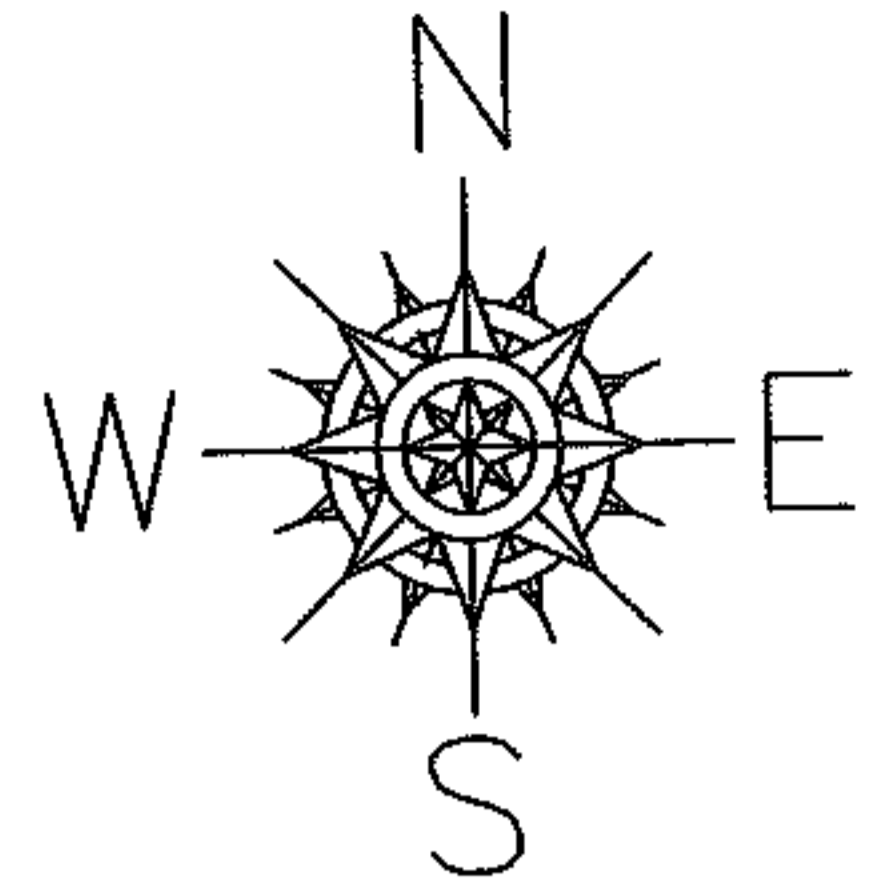


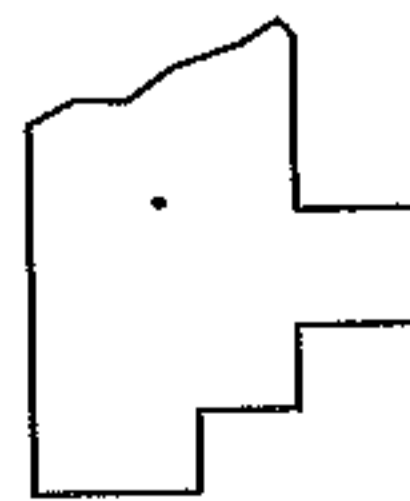
NO. 01183-V

PARENT PARCEL: _____
CHILD PARCEL: _____
STARTING POINT: _____

VACATED SECTION OF PEASELY RD IN BROWNHelm
CORRECTED TO END AT NW CORNER OF PARCEL -006
PER ORD #'S 04-931, 03-540



SEE I-K



SPLITS/DEEDS PROCESSED
LORAIN COUNTY TAX MAP DEPARTMENT
226 MIDDLE AVE. ELYRIA, OHIO

SURVEYED BY: _____
CLOSURE: _____
MAP PAGE(S): 1-J
APPROVED BY: DRH DATE: 8/2/2005
SCALE: 1" = 200' PRIOR INSTRUMENT: ORD 04-931