

RASTER

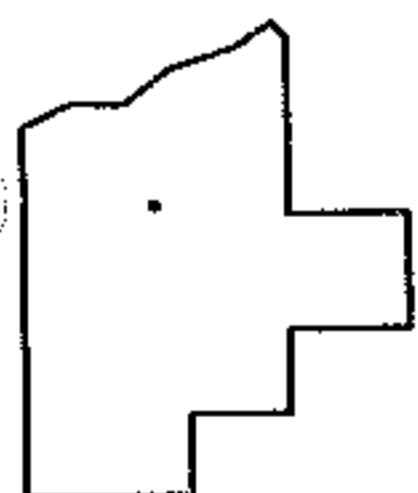
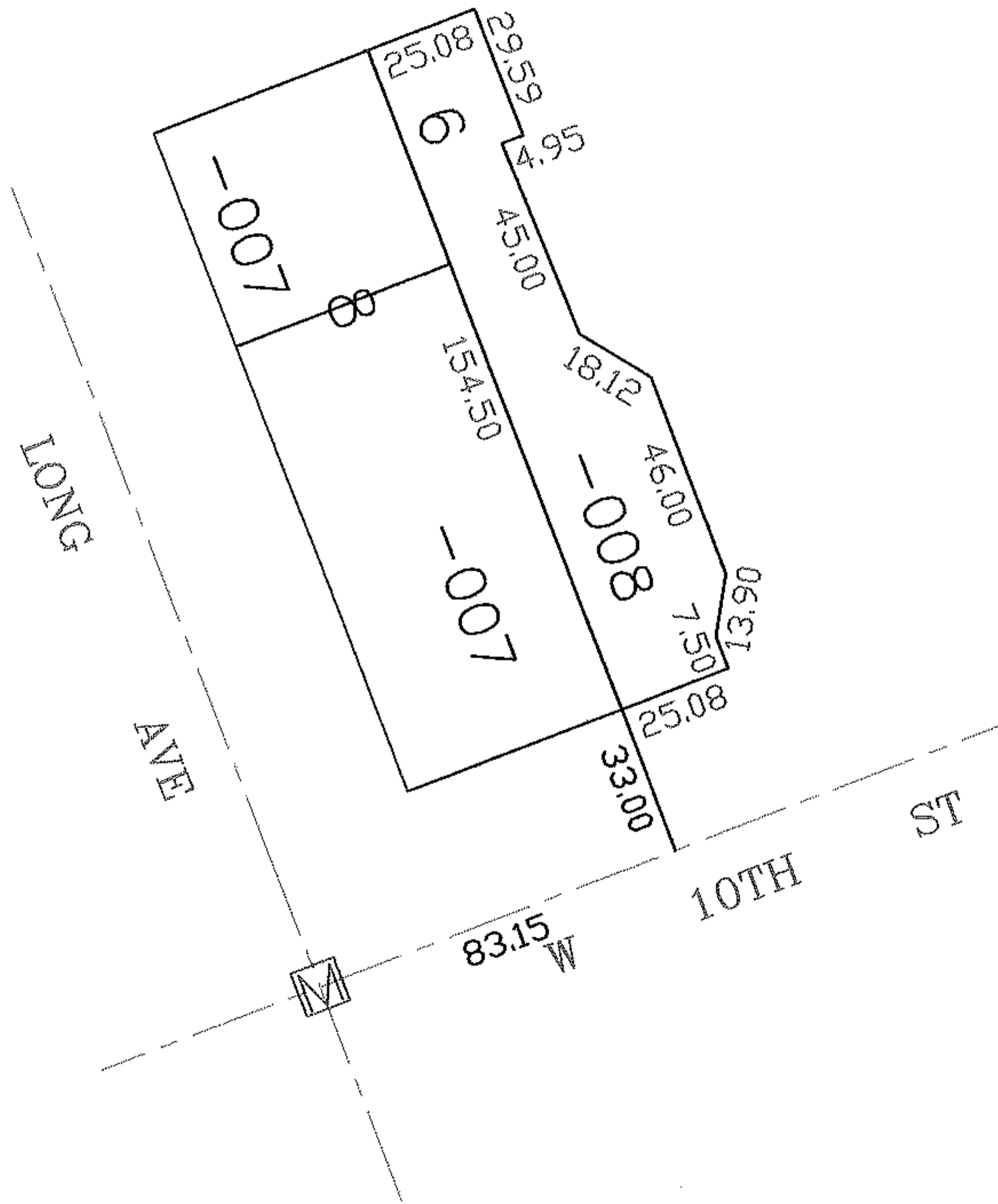
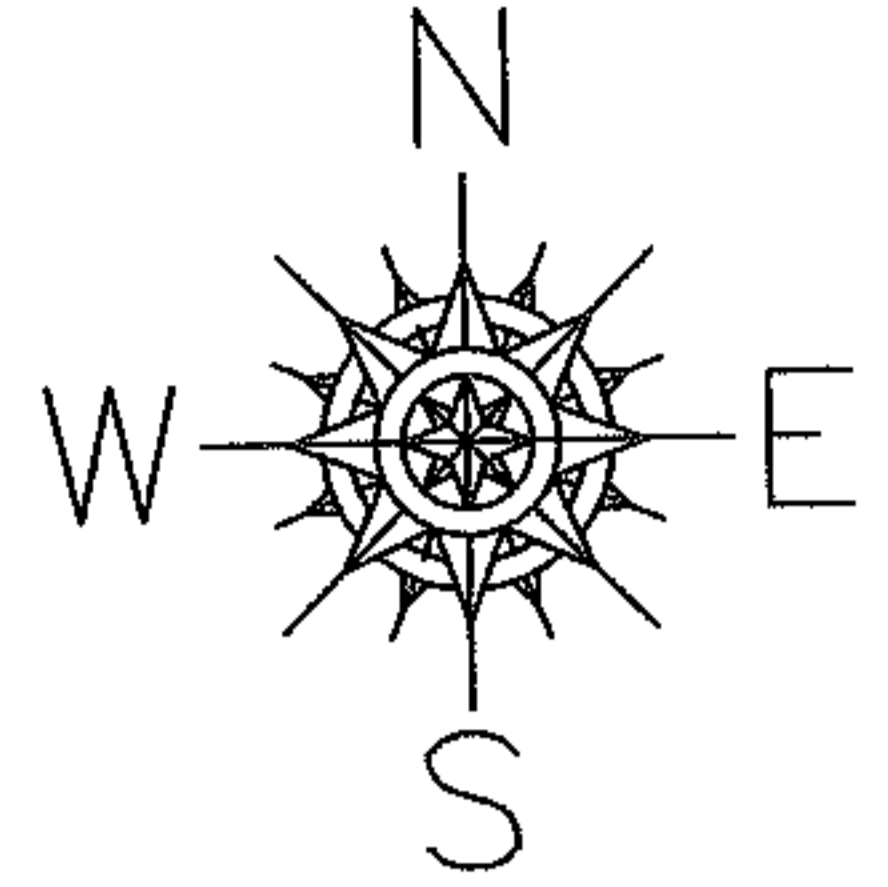
PARENT PARCEL: 02-01-004-112-008

CHILD PARCEL: --SAME--

STARTING POINT: MON BOX INT CL LONG AVE AND WEST 10TH ST

NO. 01182-C

FRONTAGE AND DEPTH
CORR PER SURVEY
THOMAS A. SIMON



SPLITS/DEEDS PROCESSED

LORAIN COUNTY TAX MAP DEPARTMENT
226 MIDDLE AVE. ELYRIA, OHIO

SURVEYED BY: THOMAS A. SIMON

CLOSURE: 1:10.000

MAP PAGE(S): 02-01-004-B

APPROVED BY: DRH DATE: 7/29/2005

SCALE: 1"= 50 PRIOR INSTRUMENT: 20030911630