

MASTER

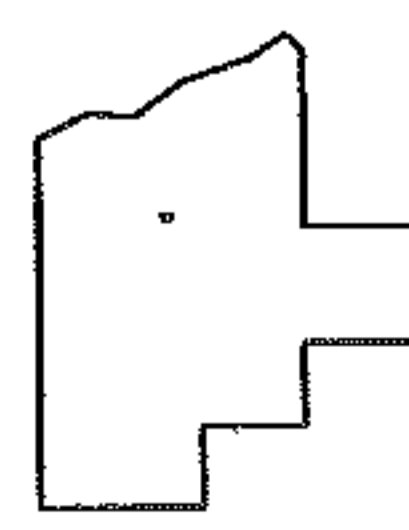
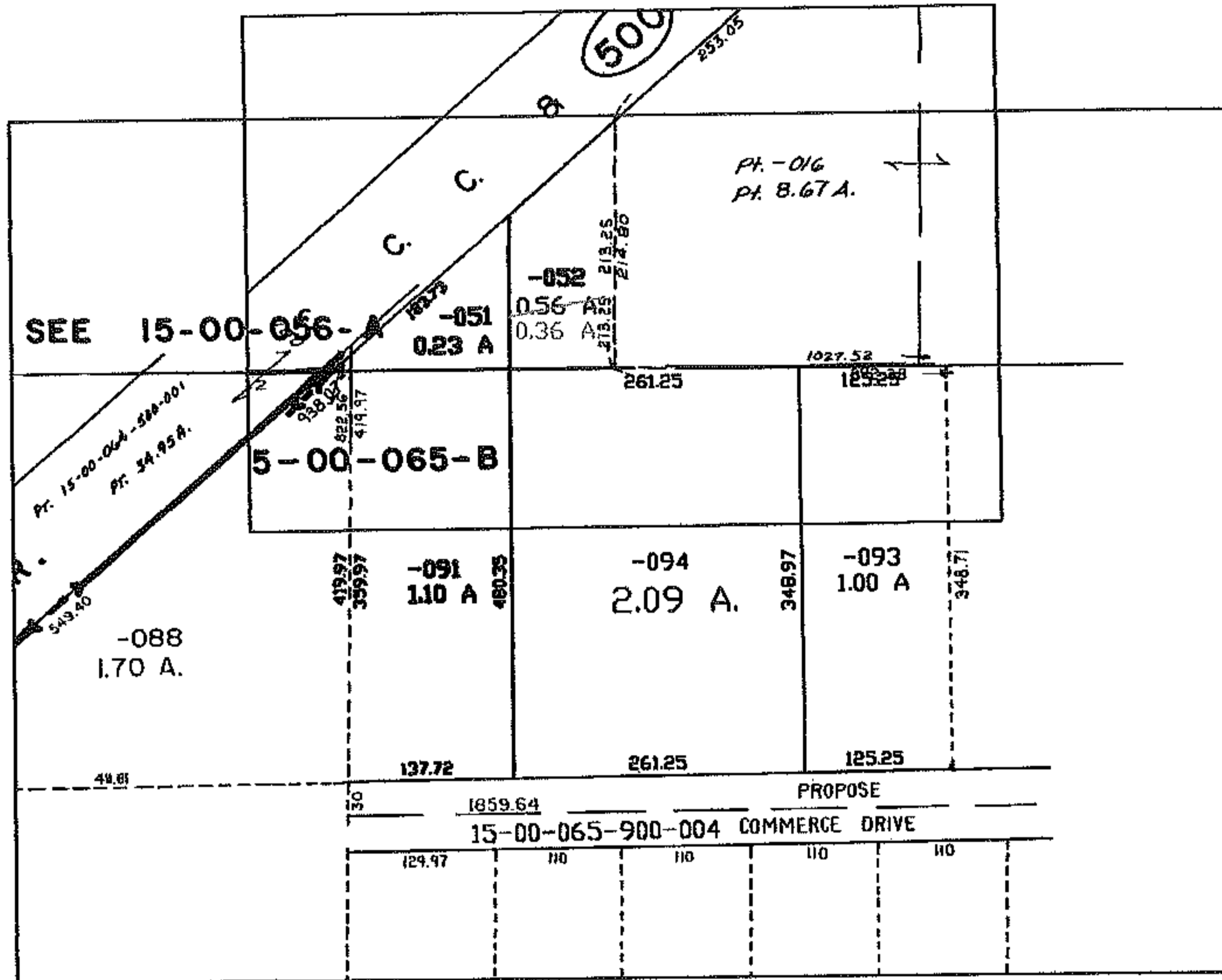
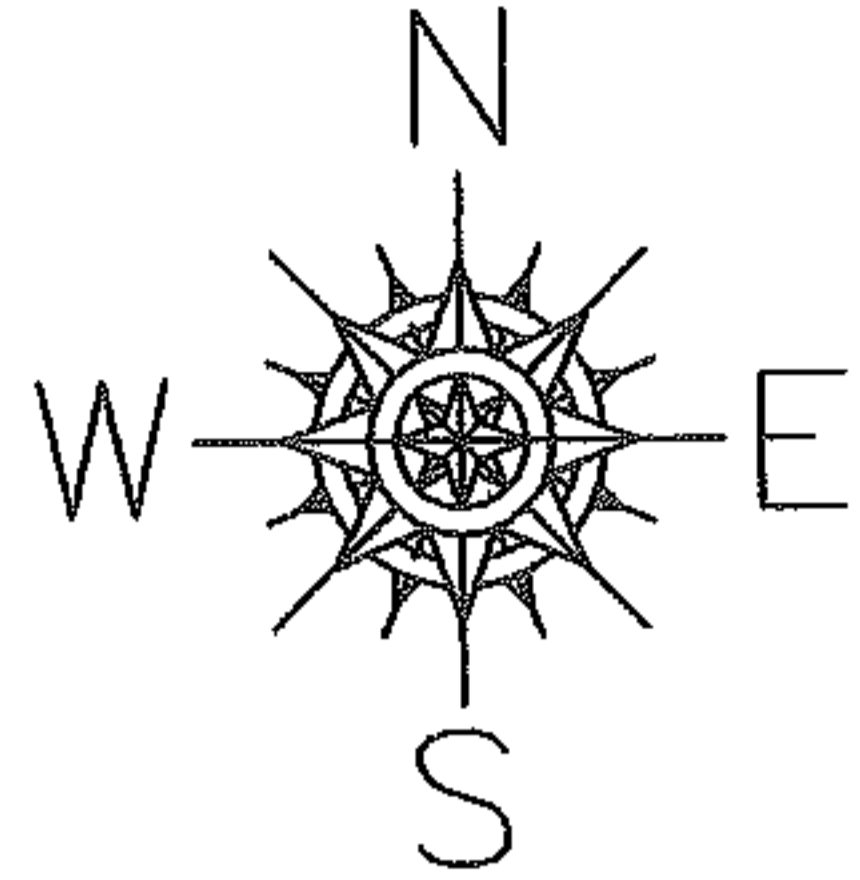
PARENT PARCEL: 15-00-056-101-052

NO. 01158-C

CHILD PARCEL: --SAME--

STARTING POINT:

AC. CORR.
PER SURVEY
ROGER SIMON



SPLITS/DEEDS PROCESSED
LORAIN COUNTY TAX MAP DEPARTMENT
226 MIDDLE AVE. ELYRIA, OHIO

SURVEYED BY: RODGER G. SIMON
CLOSURE: 1:10,000
MAP PAGE(S): 15-00-065-A, 15-00-056-A
APPROVED BY: DRH DATE: 8/2/2005
SCALE: 1" = 300' PRIOR INSTRUMENT: OR 885/729