

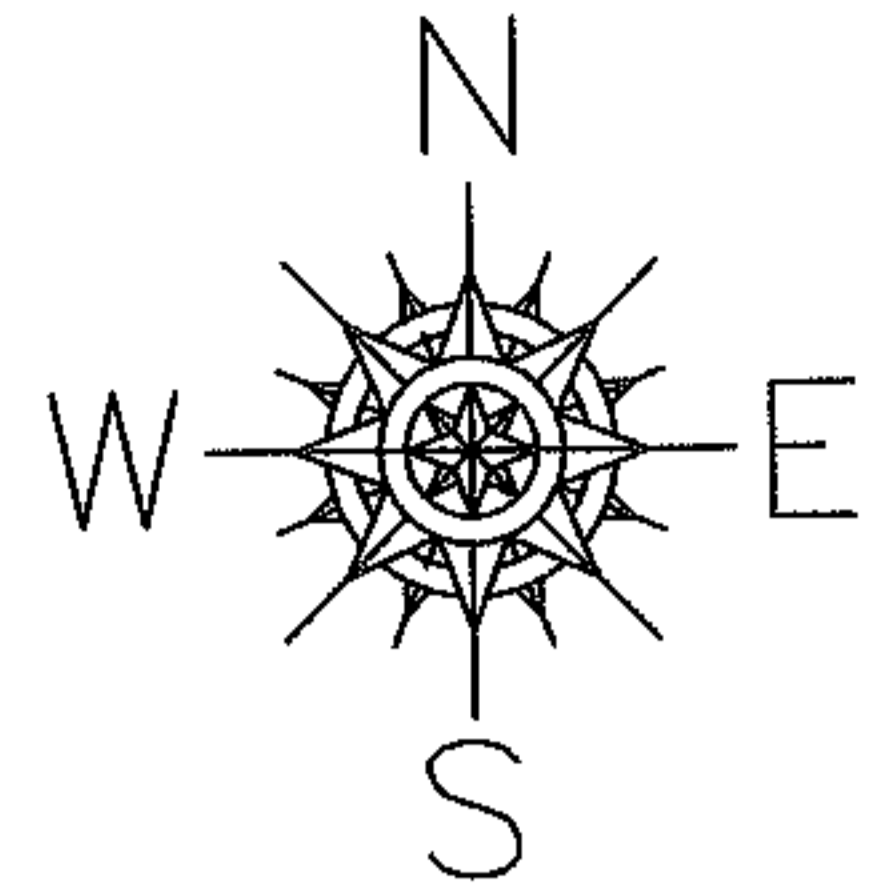
EASTER

PARENT PARCEL: 13-09-004-000-003

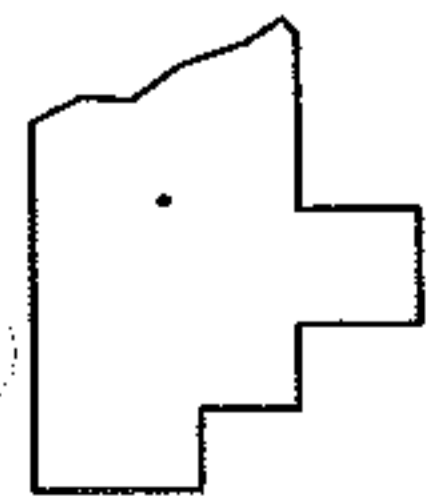
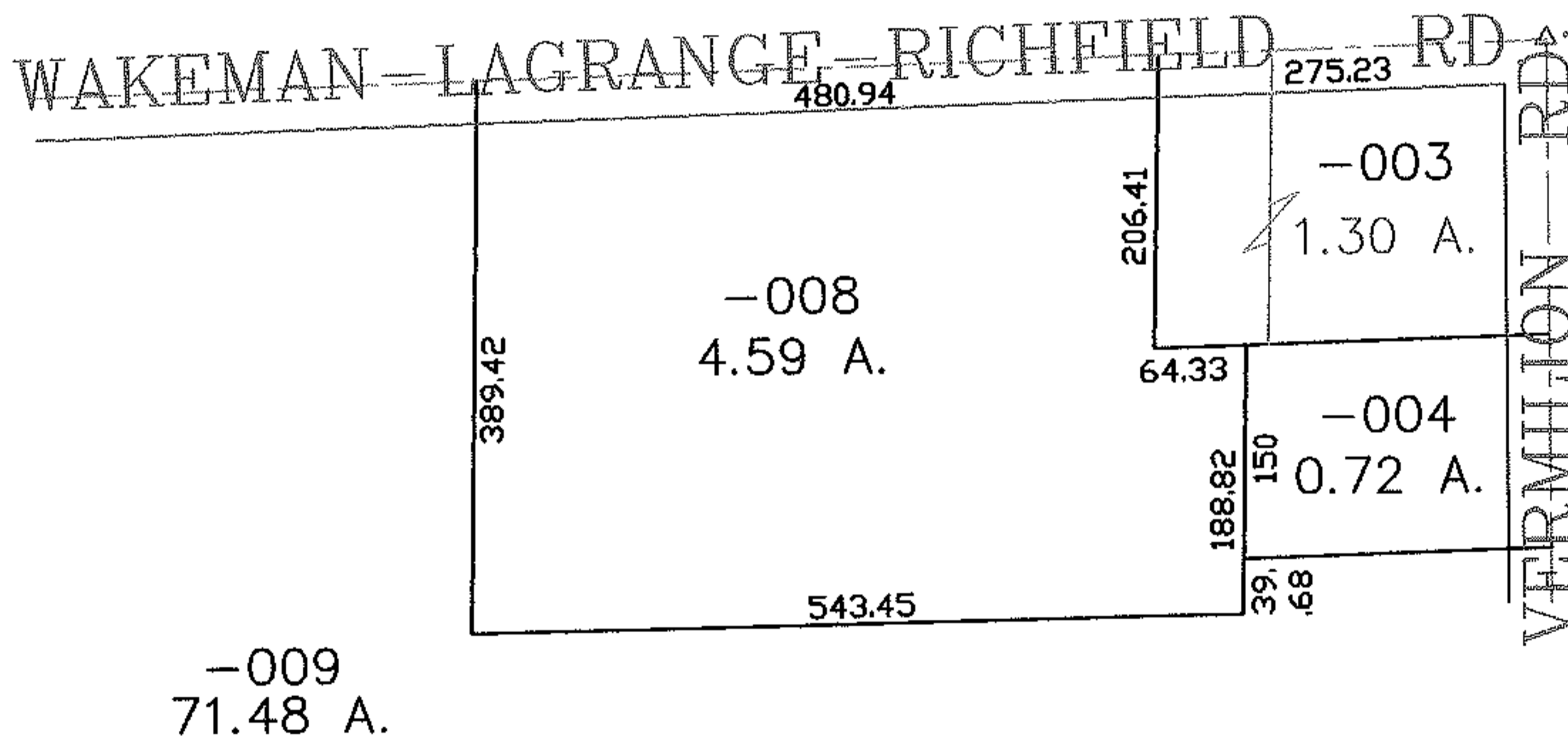
NO. 01157-D

CHILD PARCEL: --SAME--

STARTING POINT: CENTERLINE OF WAKEMAN-LAGRANGE-RICHFIELD RD. & VERMILION RD.



MAP CORR
AC. CORR.
PER DEED



SPLITS/DEEDS PROCESSED
LORAIN COUNTY TAX MAP DEPARTMENT
226 MIDDLE AVE. ELYRIA, OHIO

SURVEYED BY: N/A
CLOSURE: N/A
MAP PAGE(S): 13-F
APPROVED BY: DRH DATE: 6/13/2005
SCALE: 1" = 200' PRIOR INSTRUMENT: OR 650/541