

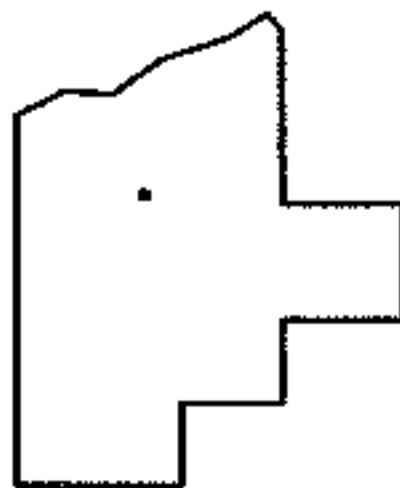
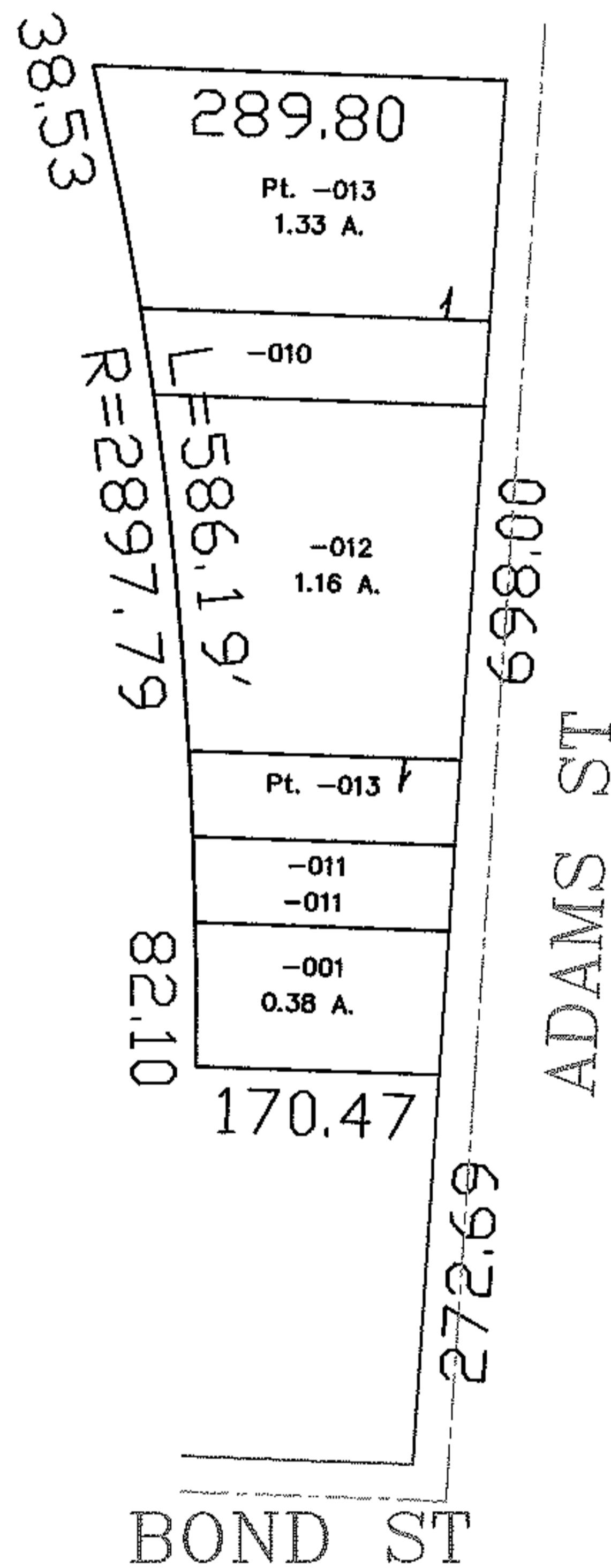
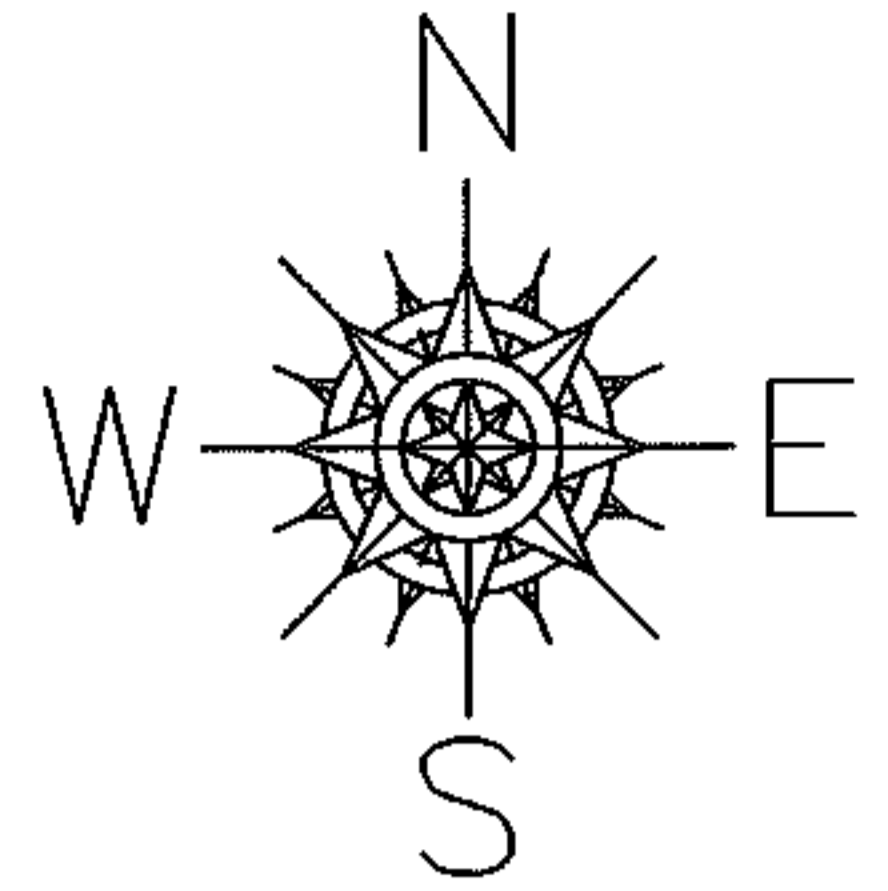
RASTER

PARENT PARCEL: 06-24-027-112-010, -011, -012, -013 & 06-24-070-102-001

NO. 01154-D

CHILD PARCEL: -SAME--

STARTING POINT: INT N ROW BOND ST AND W ROW OF ADAMS ST



**SPLITS/DEEDS PROCESSED**  
**LORAIN COUNTY TAX MAP DEPARTMENT**  
 226 MIDDLE AVE. ELYRIA, OHIO

SURVEYED BY: LOUISE VEVERKA  
 CLOSURE: 1:10,000  
 MAP PAGE(S): 06-81  
 APPROVED BY: DRH DATE: 5/25/2005  
 SCALE: 1" = 200' PRIOR INSTRUMENT: DV XXXX/XXX