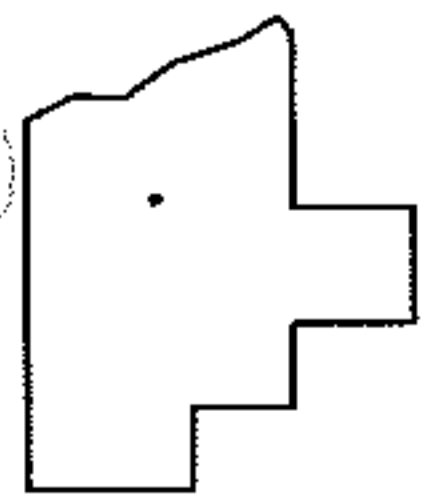
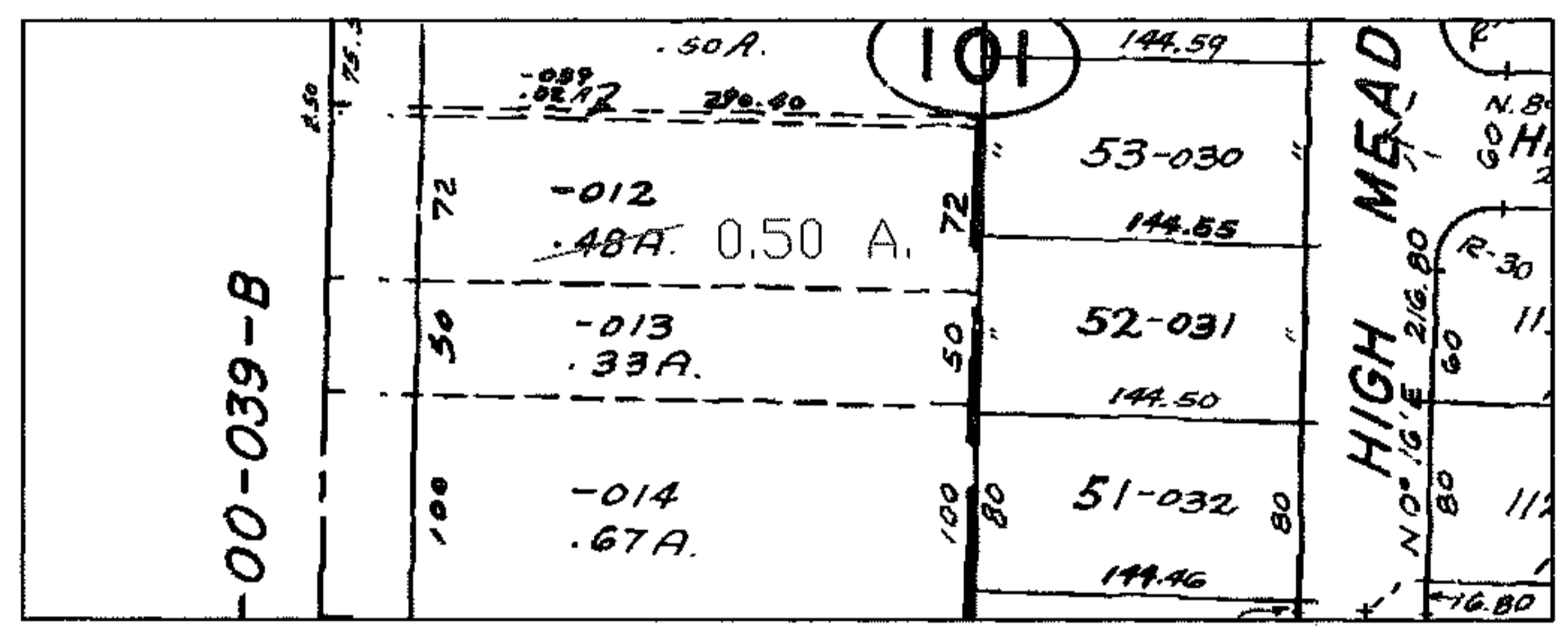
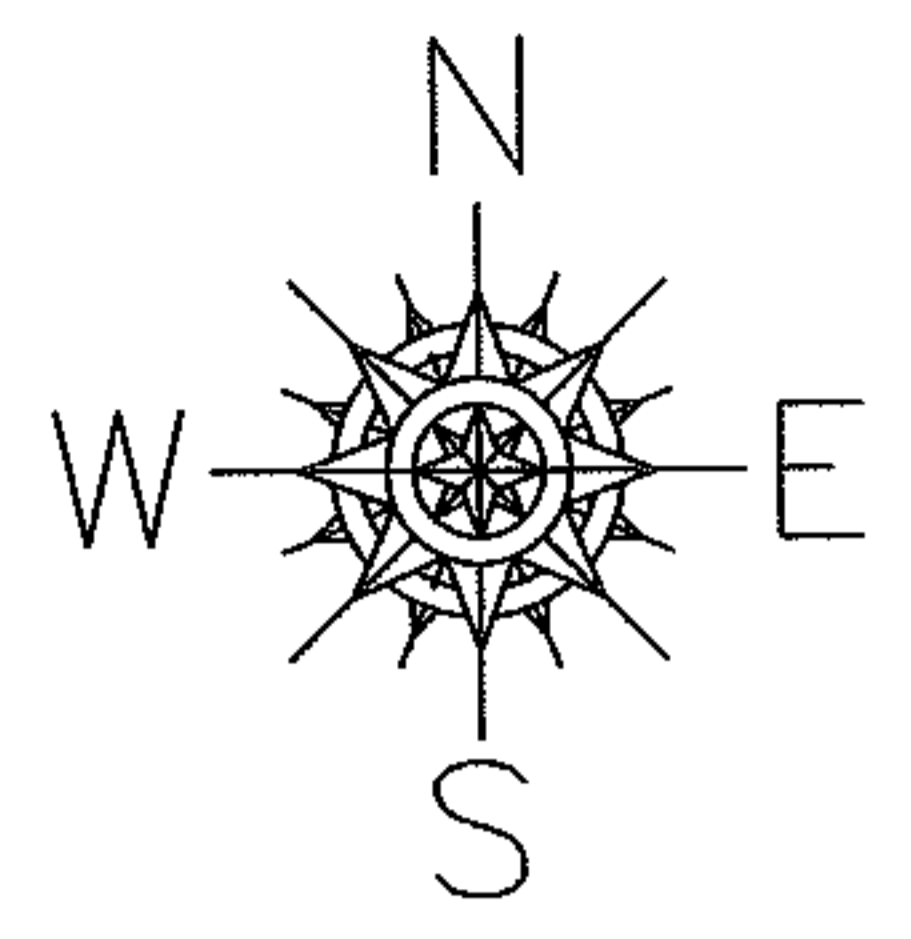


RASTER

PARENT PARCEL: 05-00-042-101-012  
CHILD PARCEL: --SAME--  
STARTING POINT:

NO. 01144-C

AC. CORR.  
PER DEED



SPLITS/DEEDS PROCESSED  
LORAIN COUNTY TAX MAP DEPARTMENT  
226 MIDDLE AVE. ELYRIA, OHIO

SURVEYED BY: \_\_\_\_\_  
CLOSURE: \_\_\_\_\_  
MAP PAGE(S): 05-00-042-A  
APPROVED BY: DRH DATE: 5/3/2005  
SCALE: 1" = 200' PRIOR INSTRUMENT: \_\_\_\_\_