

RASTER

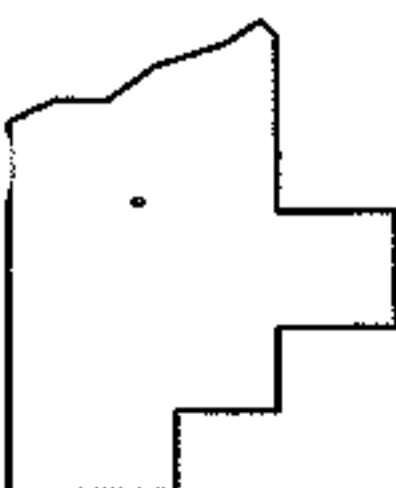
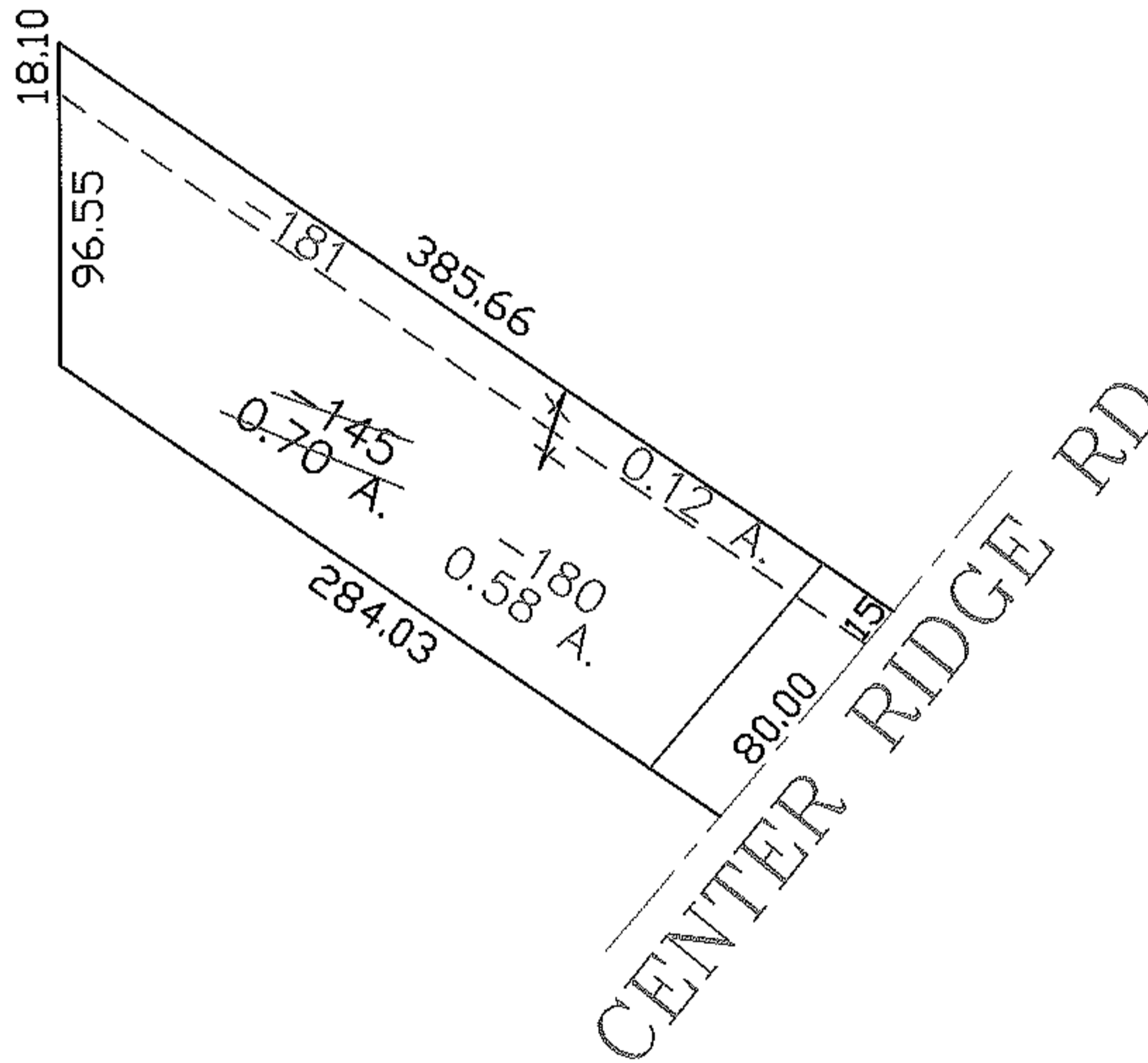
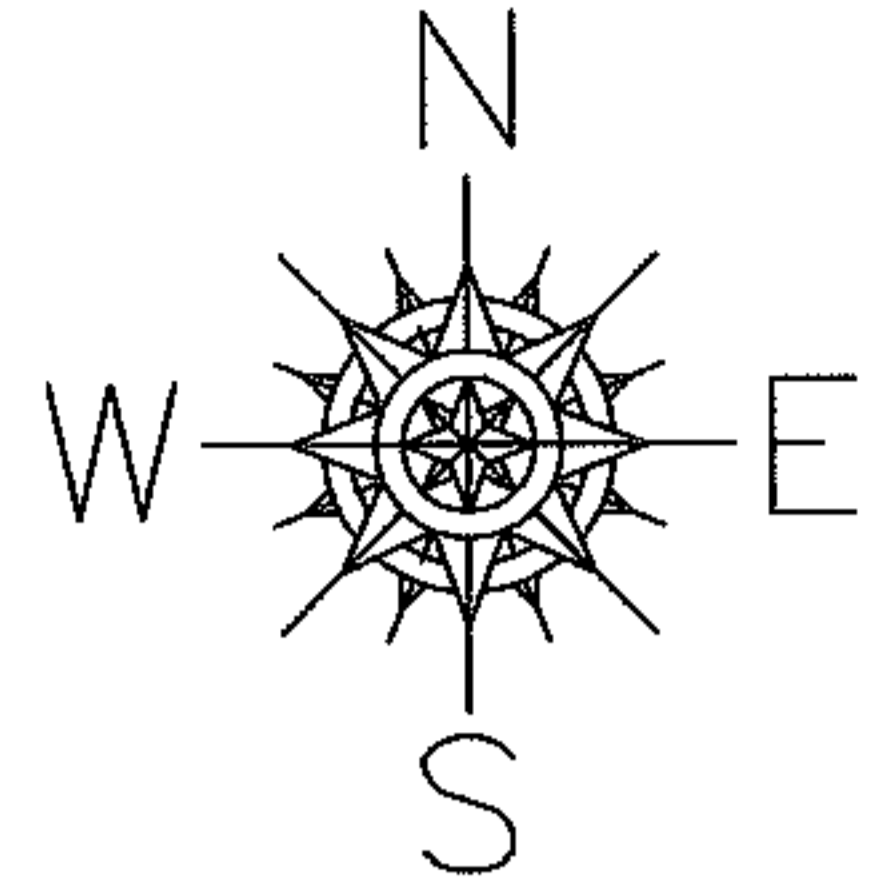
PARENT PARCEL: 07-00-006-102-145

CHILD PARCEL: 07-00-006-102-180, -181

STARTING POINT:

NO. 01141-U

UNCOMBINATION PER DEED



SPLITS/DEEDS PROCESSED

LORAIN COUNTY TAX MAP DEPARTMENT
226 MIDDLE AVE. ELYRIA, OHIO

SURVEYED BY: C.I. BIGGS

CLOSURE: 1:10,000

MAP PAGE(S): 07-00-006-D

APPROVED BY: DRH DATE: 4/26/2005

SCALE: 1" = 100' PRIOR INSTRUMENT: 20040006808