

RASTER

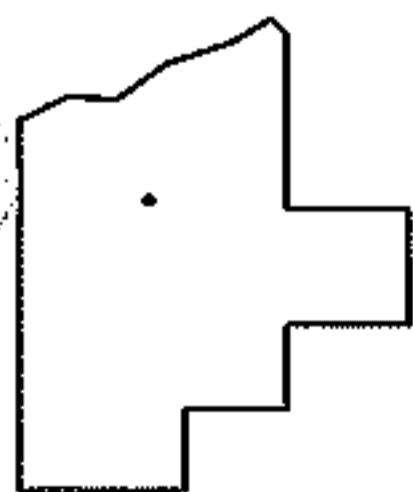
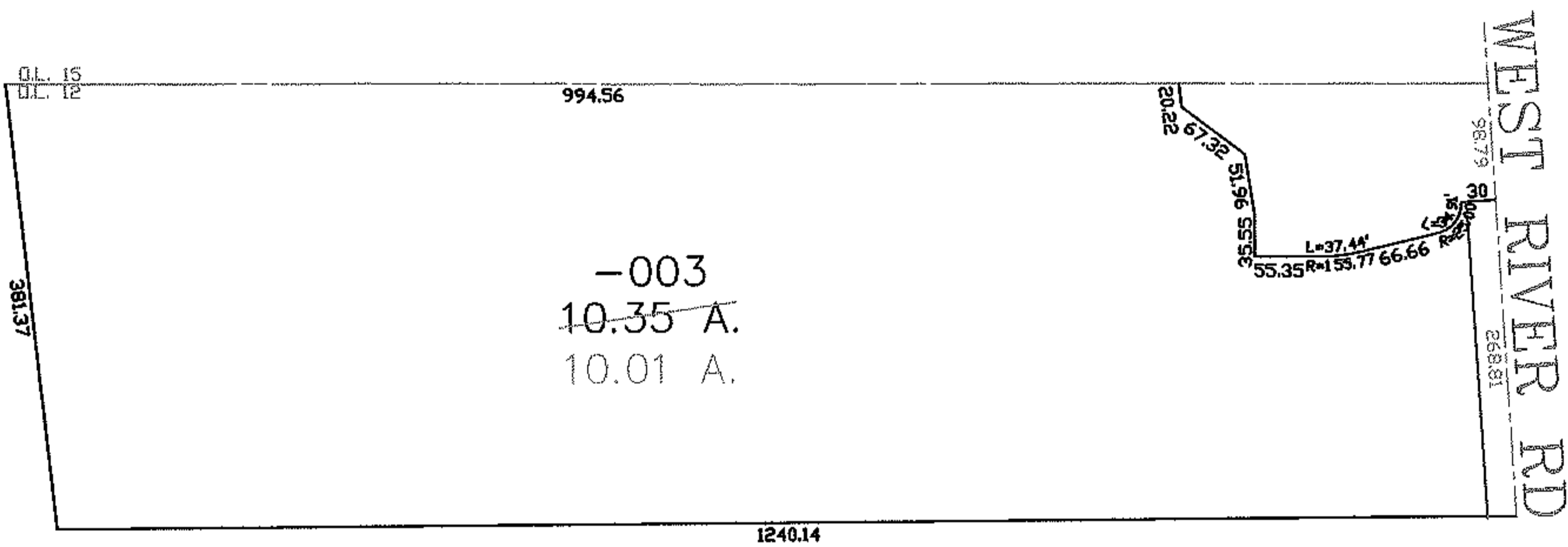
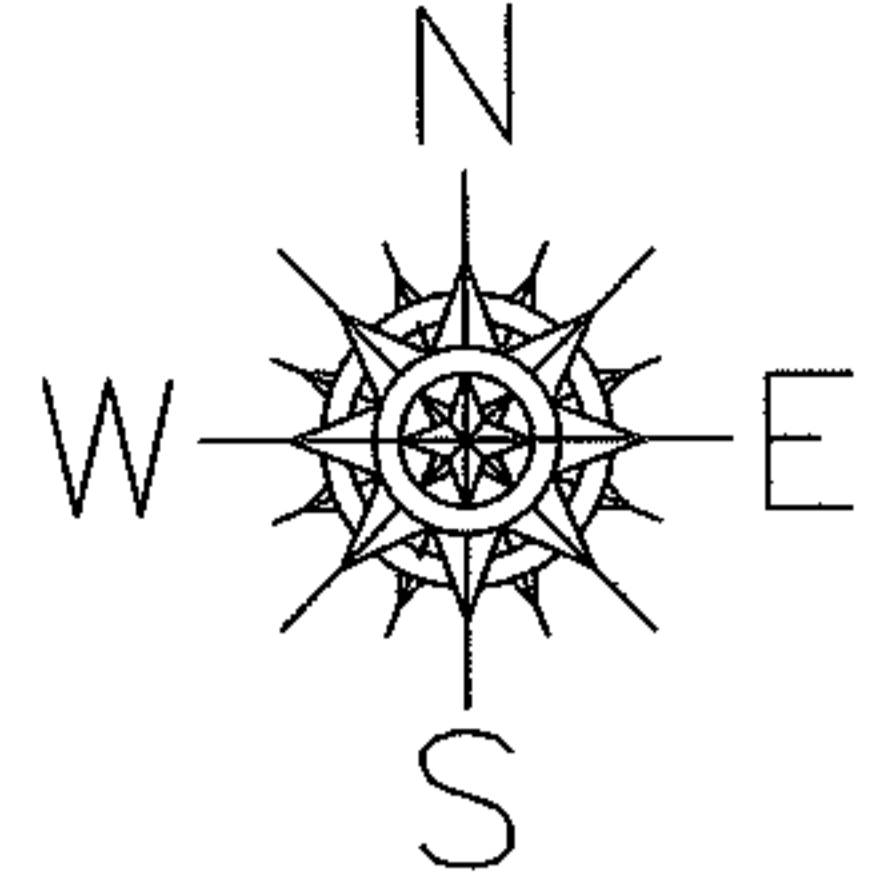
PARENT PARCEL: 06-23-012-104-003

CHILD PARCEL: --SAME--

STARTING POINT: INT CL WEST RIVER AND N LONE OF O.L. 12

NO. 01140-C

AC. CORR.  
PER SURVEY  
DAVID L. ELWELL



SPLITS/DEEDS PROCESSED

LORAIN COUNTY TAX MAP DEPARTMENT  
226 MIDDLE AVE. ELYRIA, OHIO

SURVEYED BY: DAVID L. ELWELL

CLOSURE: 1:10,000

MAP PAGE(S): 06-28

APPROVED BY: DRH DATE: 4/26/2005

SCALE: 1" = 200 PRIOR INSTRUMENT: