

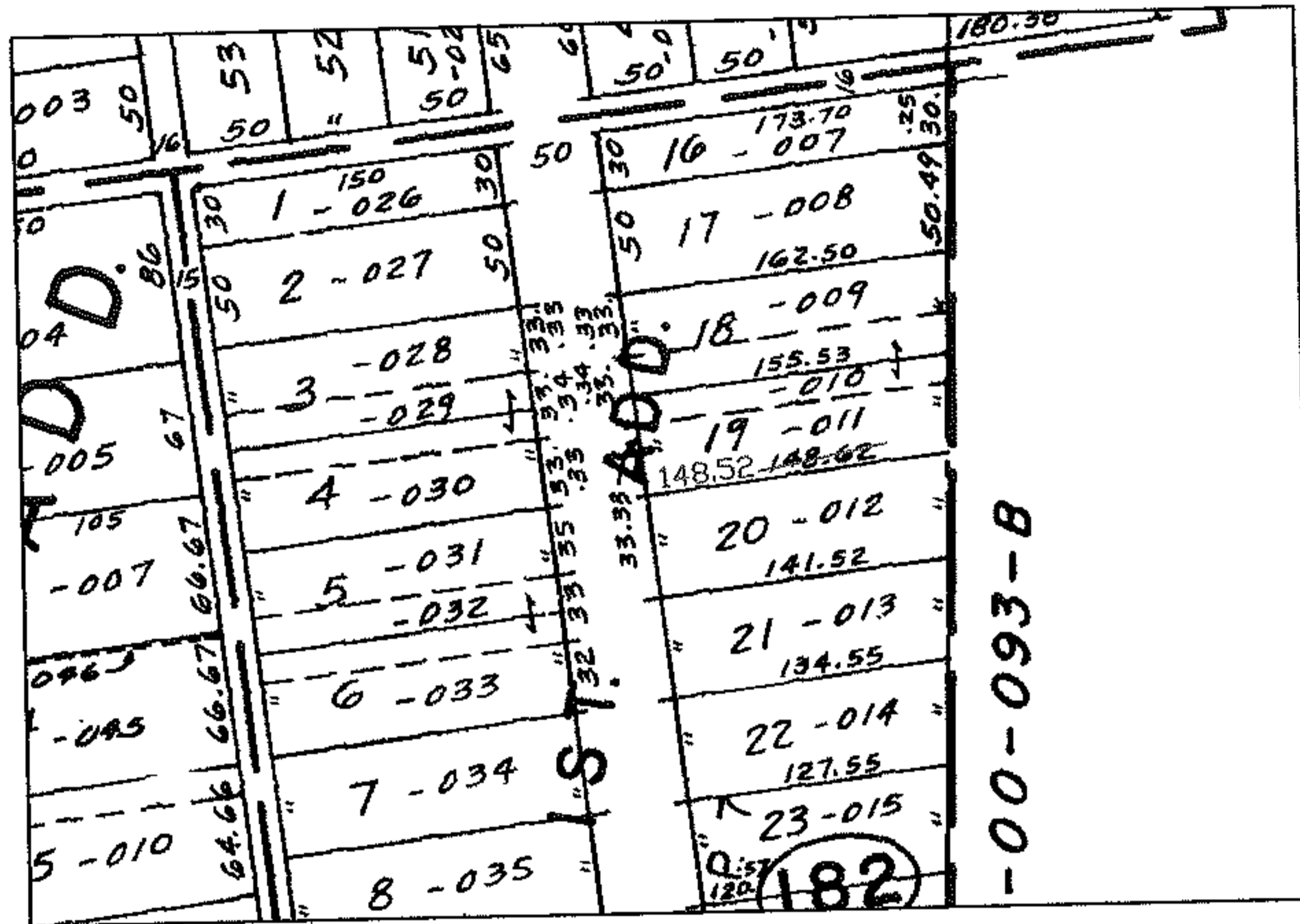
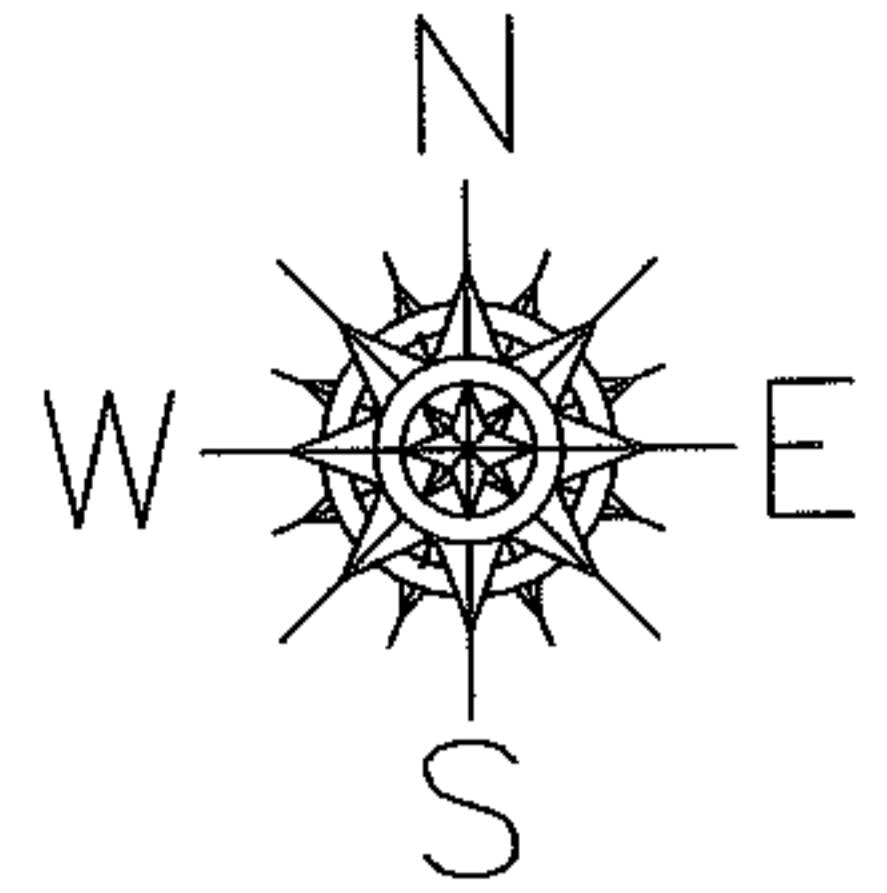
RASTER

PARENT PARCEL: 02-01-003-182-011

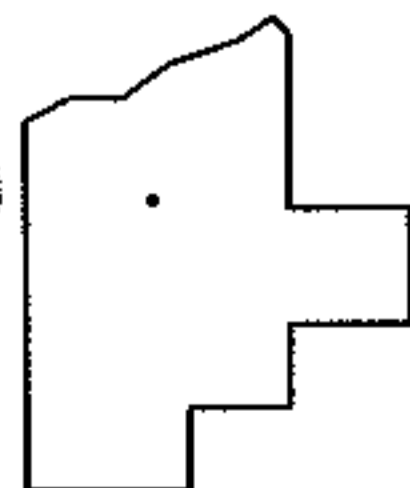
CHILD PARCEL: --SAME--

STARTING POINT:

NO. 01137-D



DEPTH CORR
PER PLAT



SPLITS/DEEDS PROCESSED
LORAIN COUNTY TAX MAP DEPARTMENT
226 MIDDLE AVE. ELYRIA, OHIO

SURVEYED BY: N/A
CLOSURE: N/A
MAP PAGE(S): 02-01-003-H
APPROVED BY: DRH DATE: 4/19/2005
SCALE: 1" = 200 PRIOR INSTRUMENT: