

RASIER

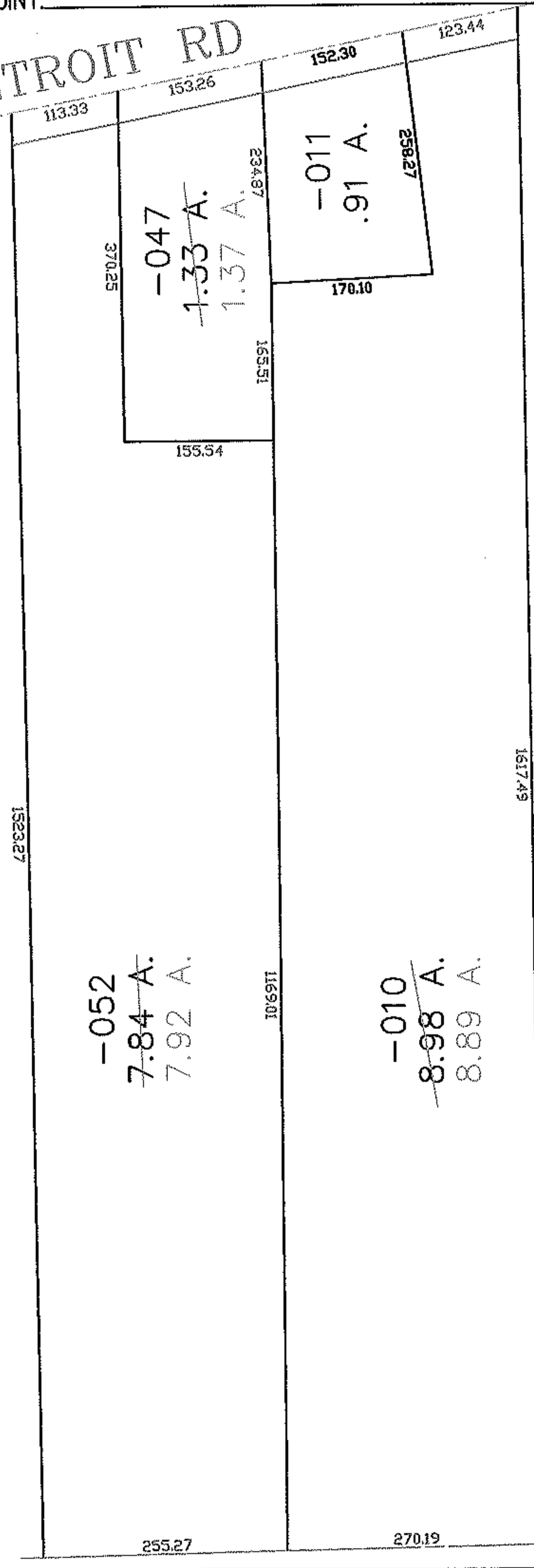
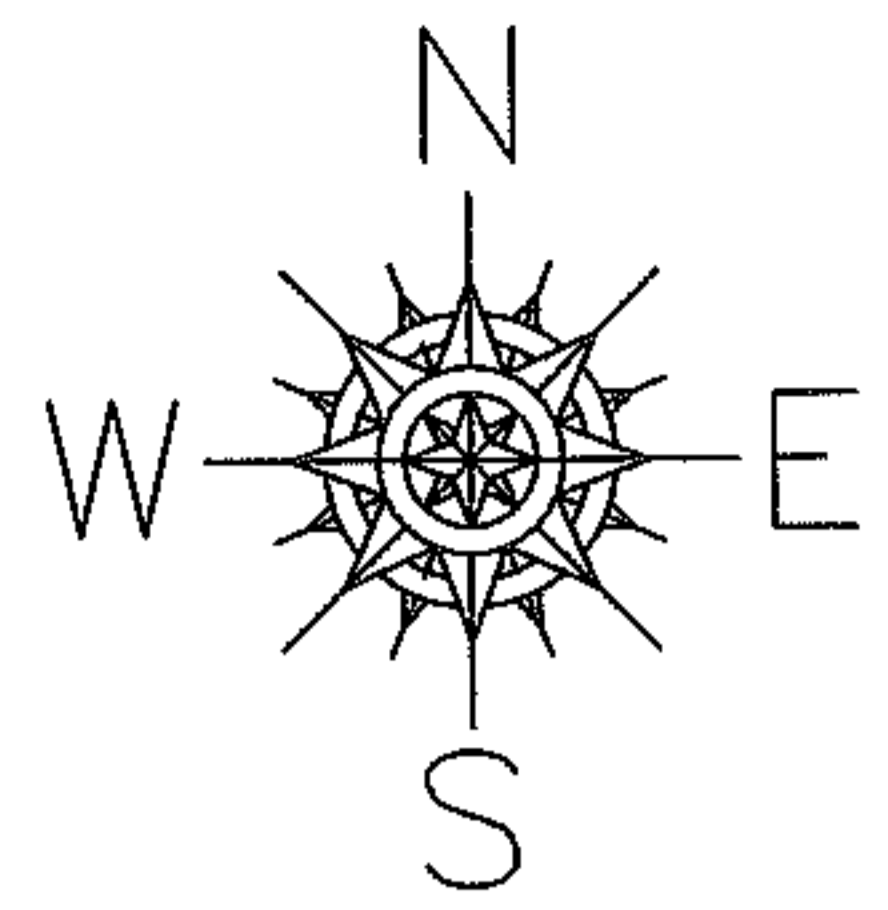
PARENT PARCEL: 04-00-027-102-010, -047, -052

CHILD PARCEL: --SAME--

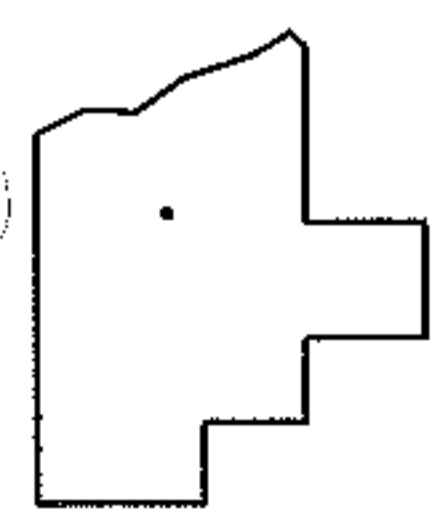
STARTING POINT:

NO. 01135-C

DETROIT RD



AC. CORR
PER SURVEY
DOUGLAS MOSLEY



SPLITS/DEEDS PROCESSED
LORAIN COUNTY TAX MAP DEPARTMENT
226 MIDDLE AVE. ELYRIA, OHIO

SURVEYED BY: DOUGLAS H. MOSLEY
CLOSURE: 1:10,000
MAP PAGE(S): 04-00-027-A
APPROVED BY: DRH DATE: 4/18/2005
SCALE: 1" = 200' PRIOR INSTRUMENT: O.R. 1248/711