

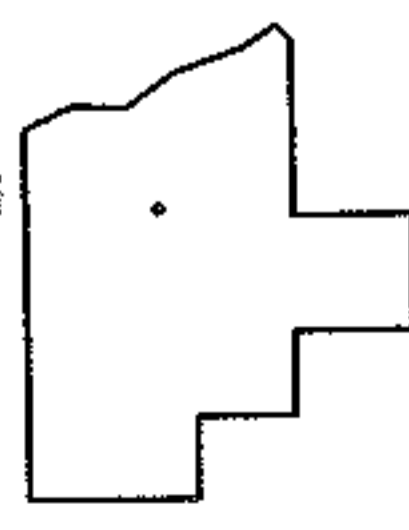
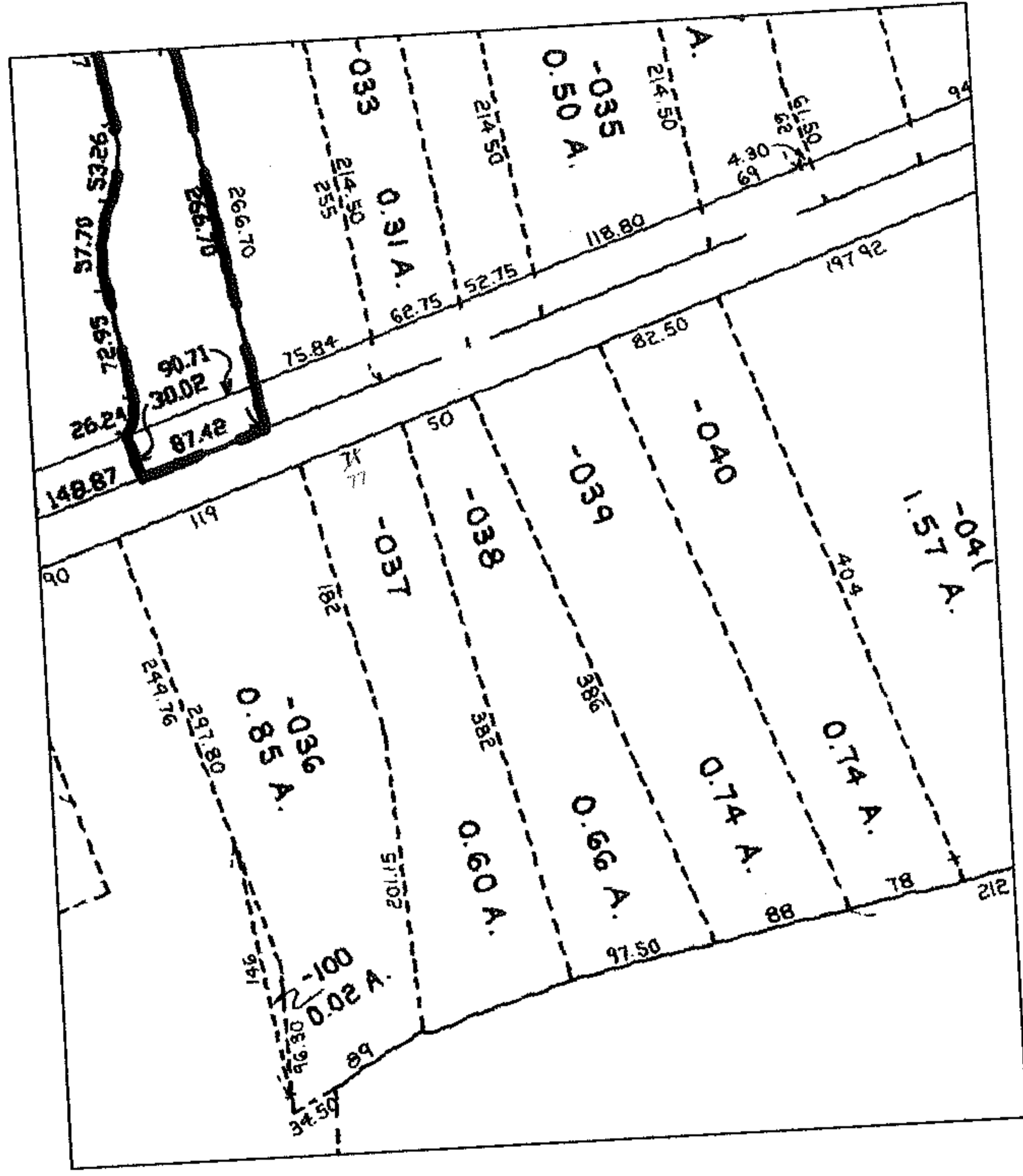
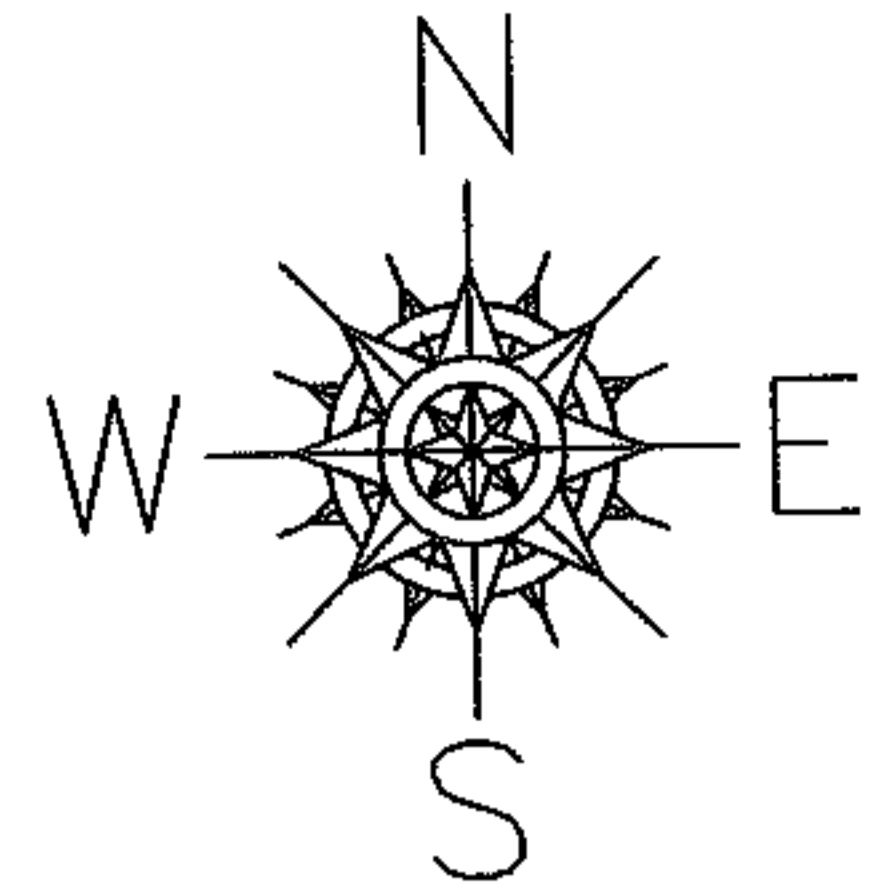
PARENT PARCEL: 07-00-028-103-037

CHILD PARCEL: --SAME--

STARTING POINT:

NO. 01127-C

FRONTAGE CORR PER DEED (Map Corr)



SPLITS/DEEDS PROCESSED
LORAIN COUNTY TAX MAP DEPARTMENT
226 MIDDLE AVE. ELYRIA, OHIO

SURVEYED BY: N/A
CLOSURE: N/A
MAP PAGE(S): 07-00-028-D
APPROVED BY: DRH DATE: 3/30/2005
SCALE: 1" = 200' PRIOR INSTRUMENT: 936/711