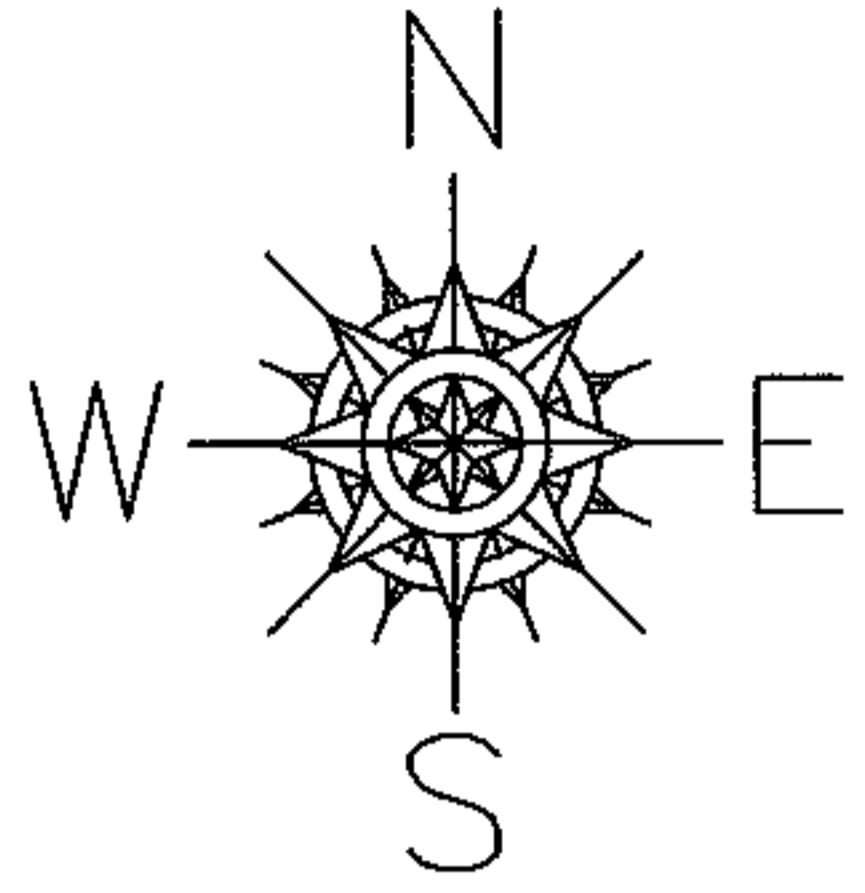
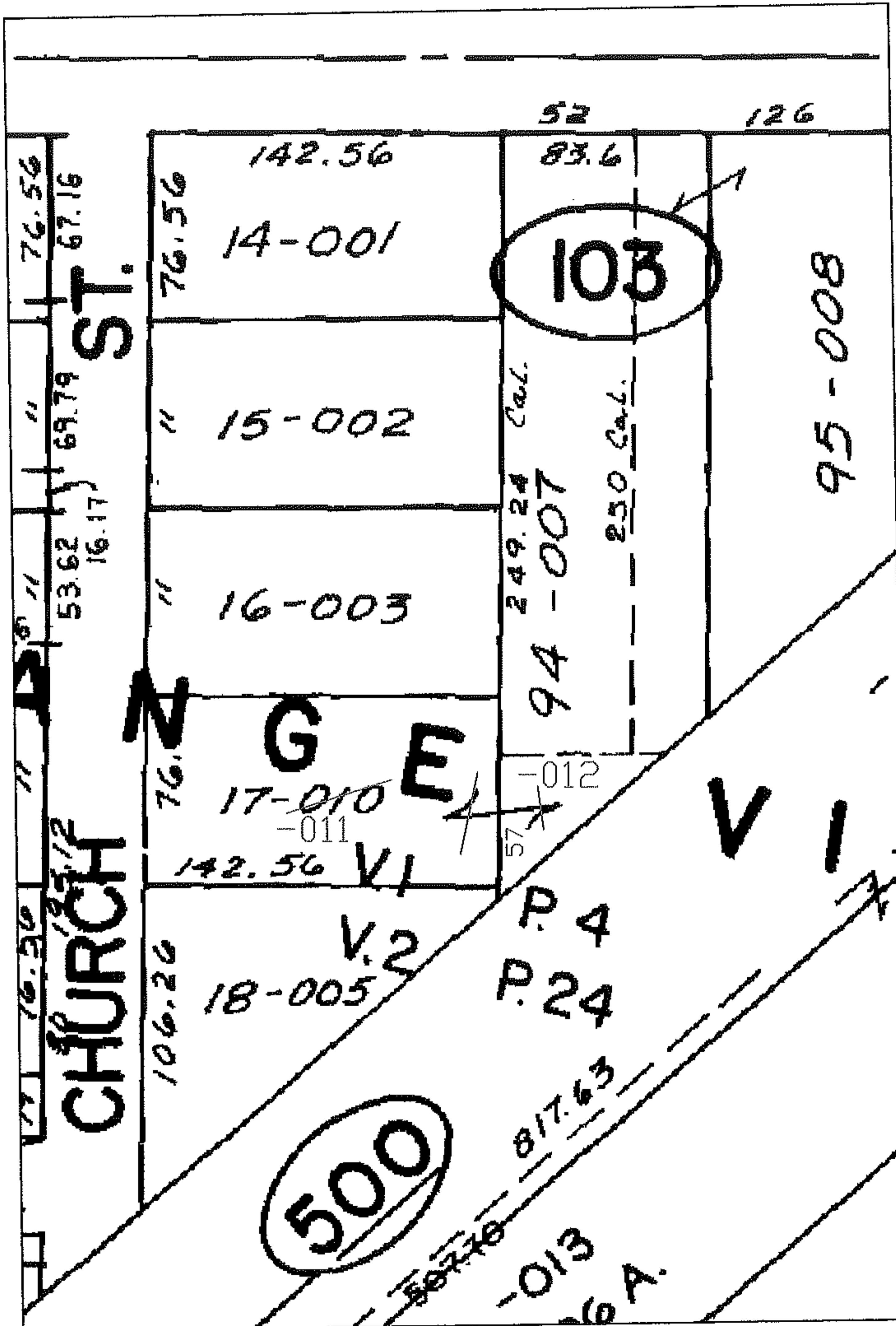


PARENT PARCEL: 15-00-055-103-010

CHILD PARCEL: 15-00-055-103-011, -012

STARTING POINT: SW CORNER OF SL 94

NO. 01119-U



UNCOMBINATION PER DEED

OK TO TRANSFER 2005

SURVEY BEFORE NEXT TRANSFER

SPLITS/DEEDS PROCESSED

LORAIN COUNTY TAX MAP DEPARTMENT
226 MIDDLE AVE. ELYRIA, OHIO

SURVEYED BY: N/A

CLOSURE: N/A

MAP PAGE(S): 15-00-055-A

APPROVED BY: DRH DATE: 3/17/2005

SCALE: 1" = 100 PRIOR INSTRUMENT: 20020836535