

PASTER

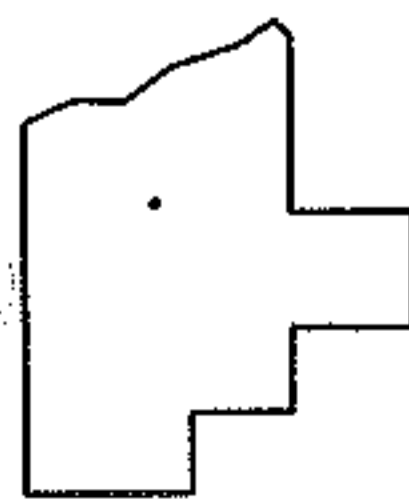
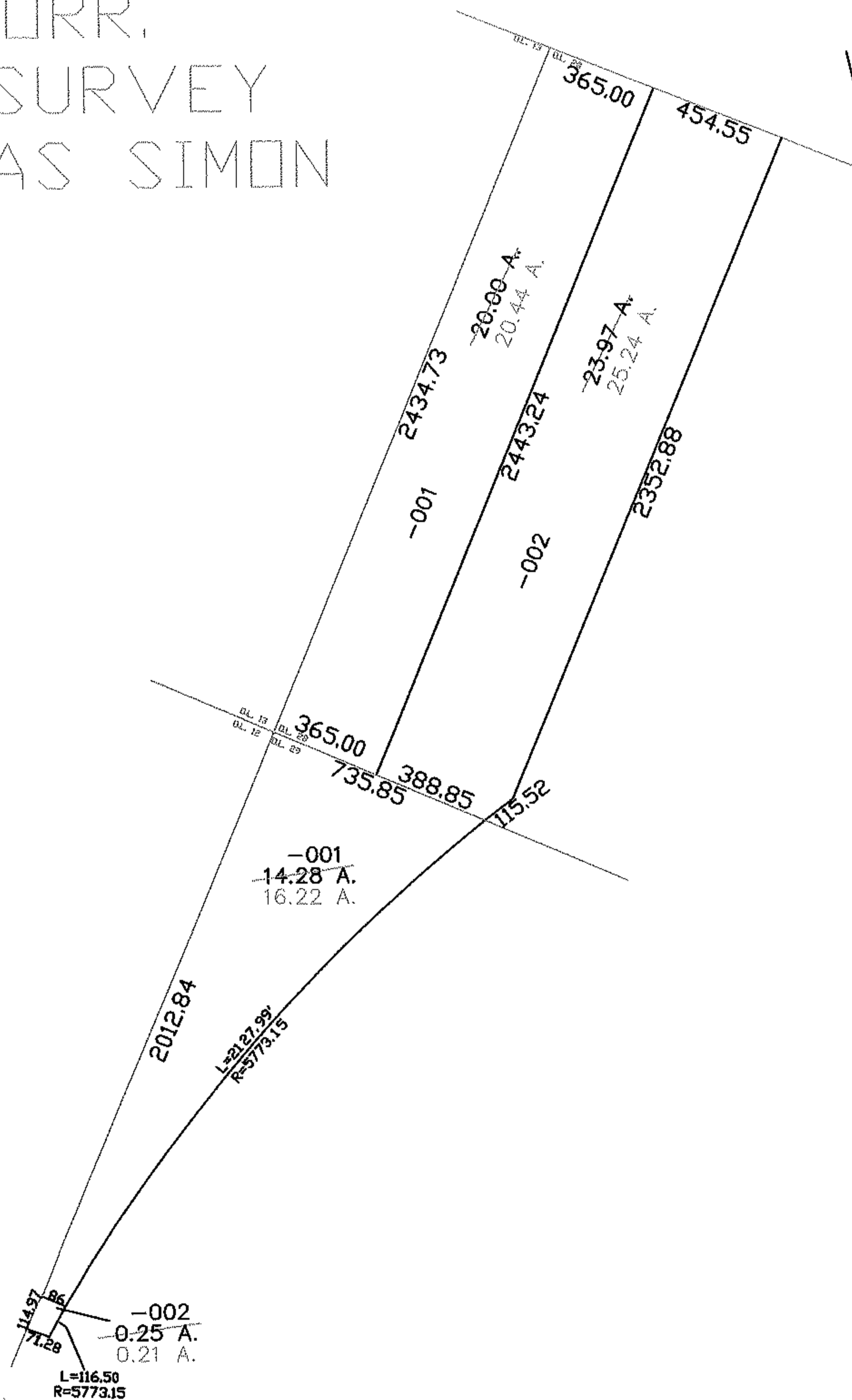
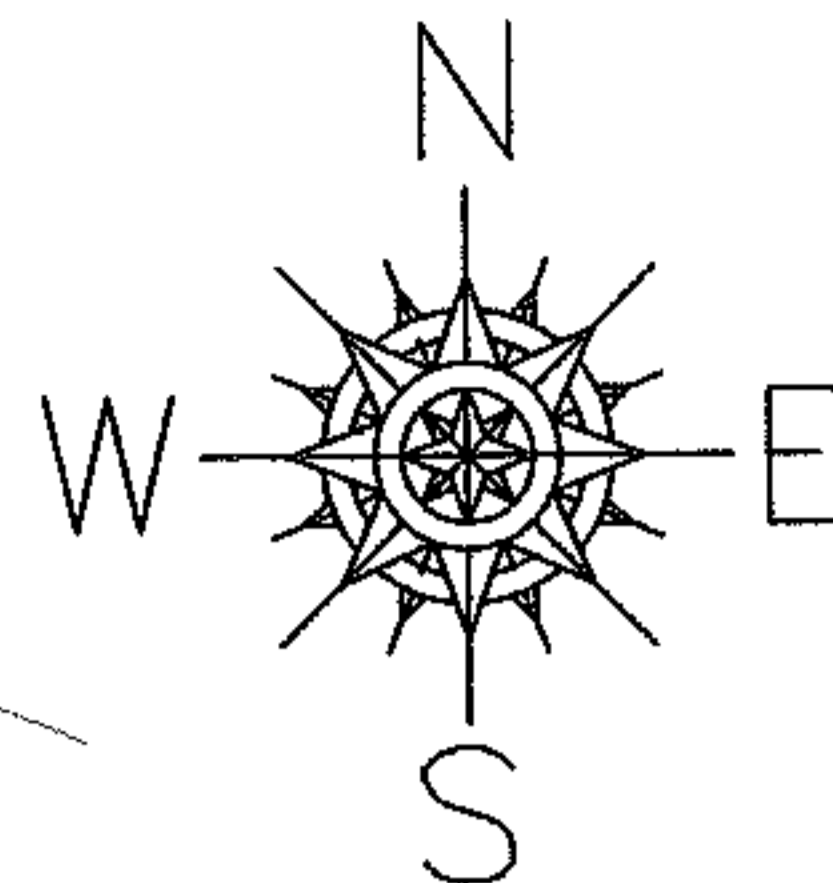
PARENT PARCEL: 05-00-029-000-001 & -002, 05-00-028-000-001 & -002

NO. 01116-D

CHILD PARCEL: --SAME--

STARTING POINT: NW CORNER OF O.L.29

AC. CORR.
PER SURVEY
THOMAS SIMON



SPLITS/DEEDS PROCESSED

LORAIN COUNTY TAX MAP DEPARTMENT
226 MIDDLE AVE. ELYRIA, OHIO

SURVEYED BY: THOMAS SIMON
CLOSURE: 1:10,000
MAP PAGE(S): 05-00-029-A
APPROVED BY: DRH DATE: 3/11/2005
SCALE: 1" = 600 PRIOR INSTRUMENT: 20058939