

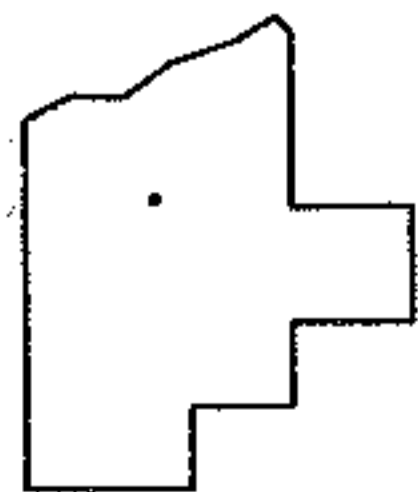
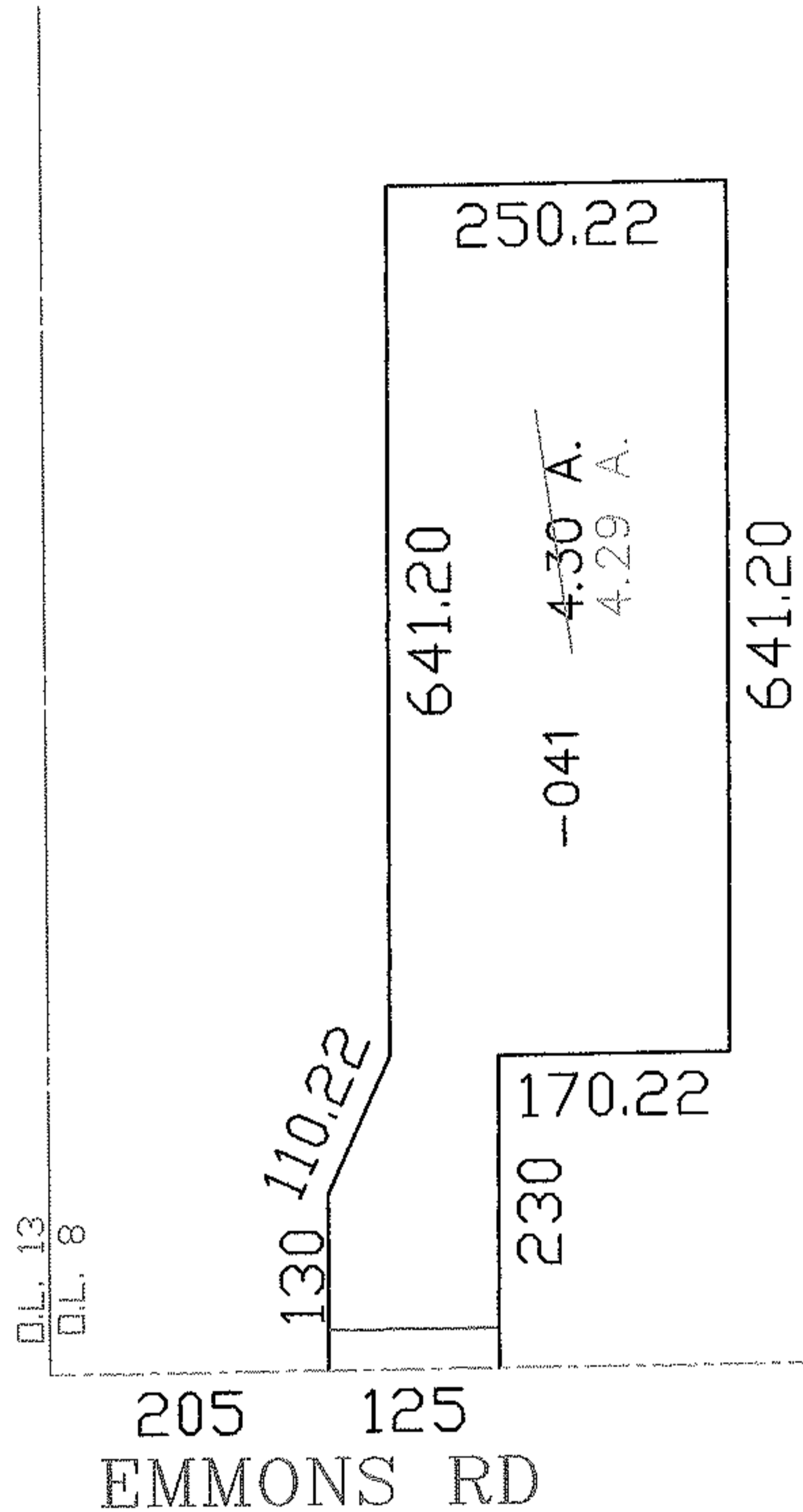
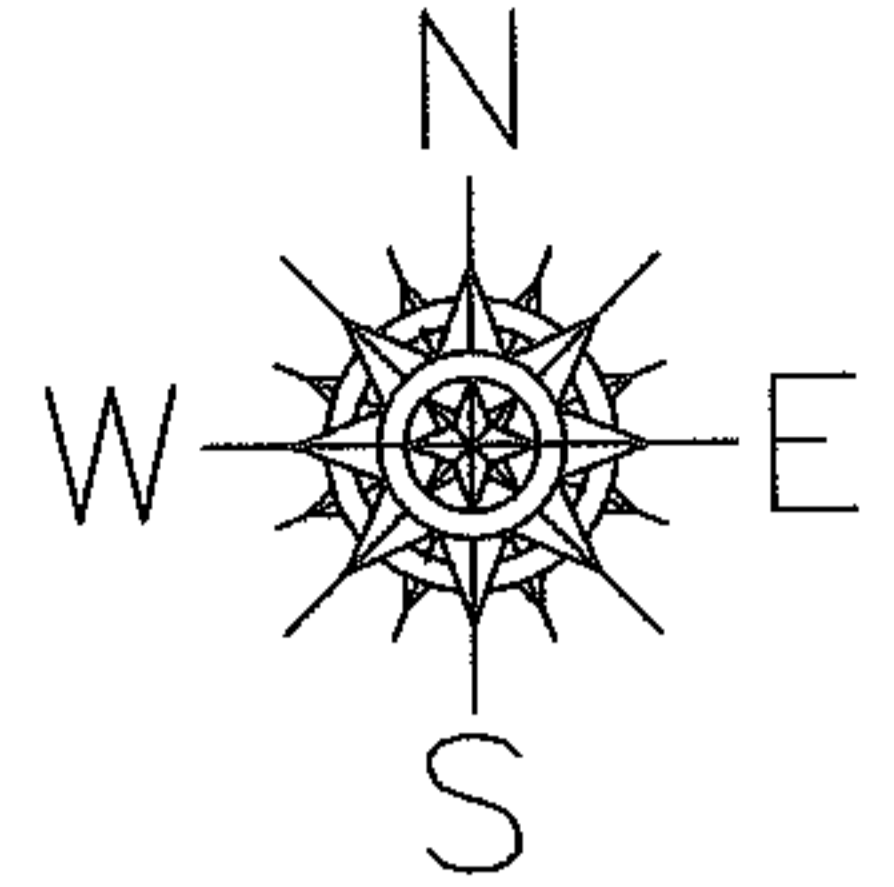
RASTER

PARENT PARCEL: 12-00-008-000-041

CHILD PARCEL: --SAME--

STARTING POINT: ITN CL EMMONS RD AND SW CORNER OF O.L. 8

NO. 01113-C



**SPLITS/DEEDS PROCESSED**  
**LORAIN COUNTY TAX MAP DEPARTMENT**  
 226 MIDDLE AVE. ELYRIA, OHIO

SURVEYED BY: JAMES B. ROOT  
 CLOSURE: 1:10,000  
 MAP PAGE(S): 12-00-008-A  
 APPROVED BY: DRH DATE: 2/23/2005  
 SCALE: 1" = 200' PRIOR INSTRUMENT: