

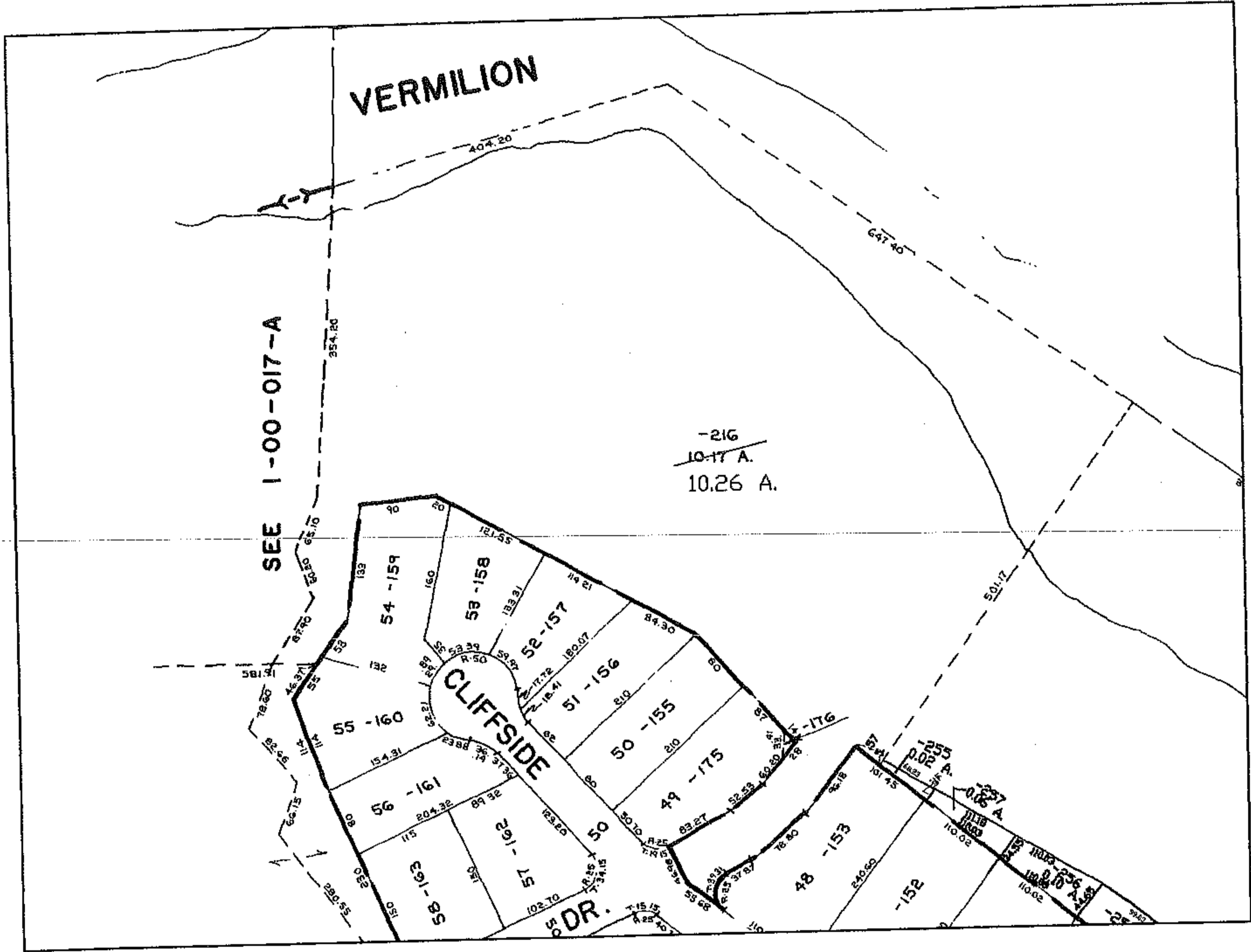
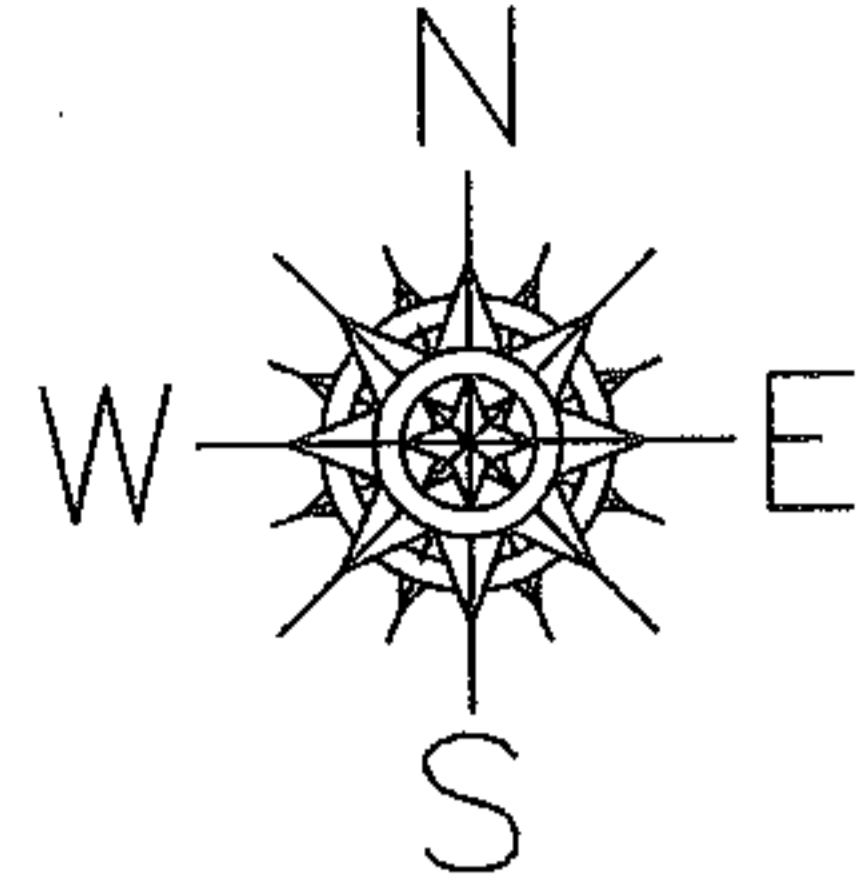
PARENT PARCEL: 01-00-017-000-216

NO. 01106-A

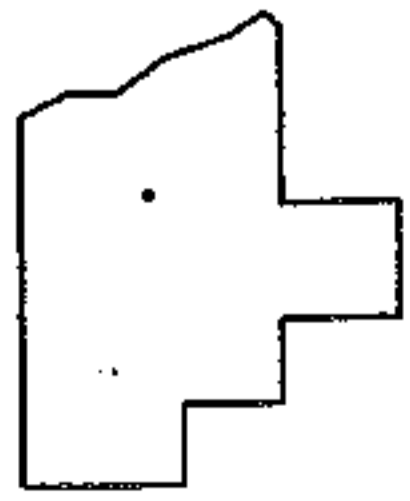
CHILD PARCEL: --SAME--

STARTING POINT:

AC. CORR.
PER DEED



NOT TO SCALE



SPLITS/DEEDS PROCESSED
LORAIN COUNTY TAX MAP DEPARTMENT
226 MIDDLE AVE. ELYRIA, OHIO

SURVEYED BY: N/A
CLOSURE: N/A
MAP PAGE(S): 01-00-017-B
APPROVED BY: DRH DATE: 2/8/2005
SCALE: 1" = 300' PRIOR INSTRUMENT: 200466932158