

RASTER

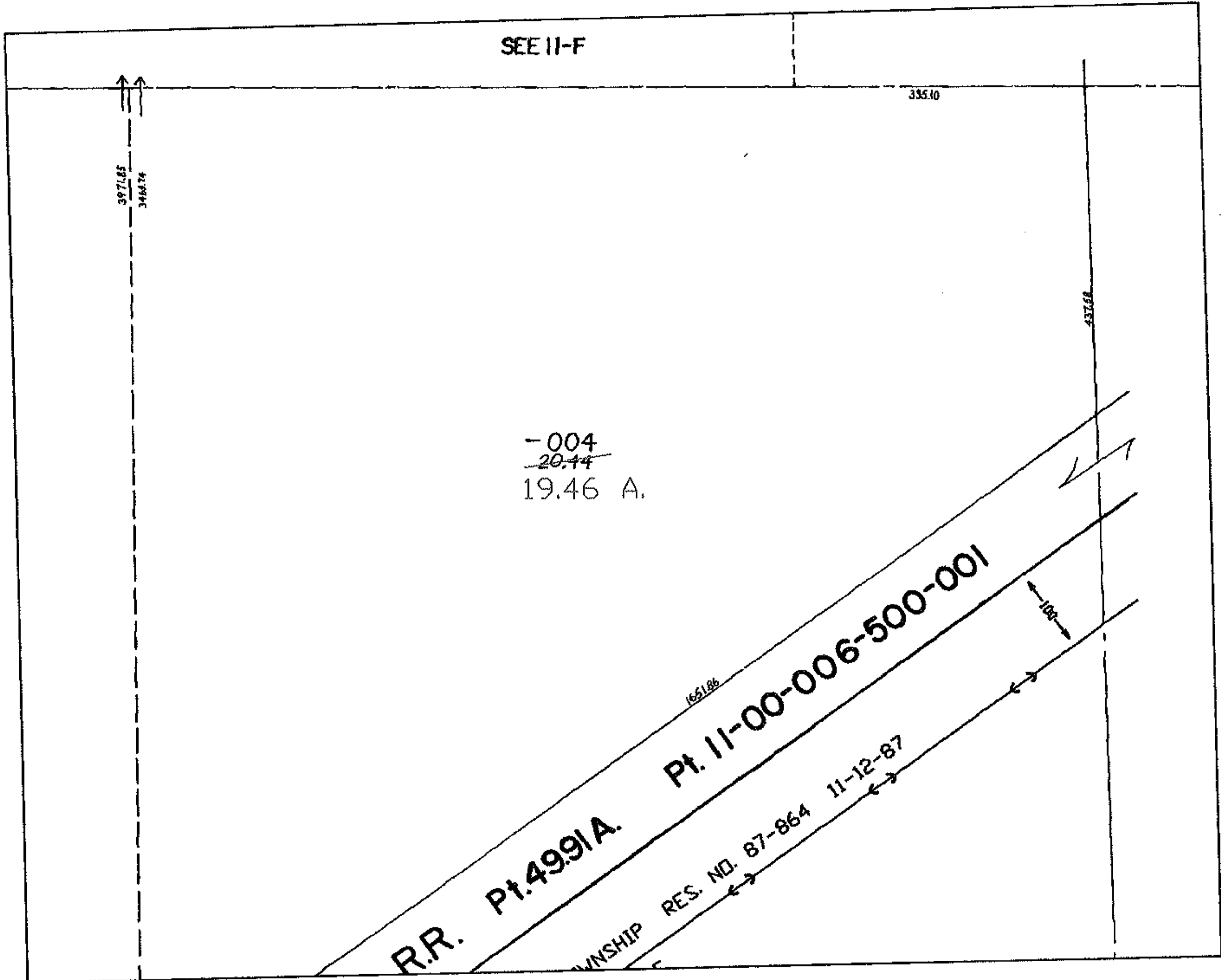
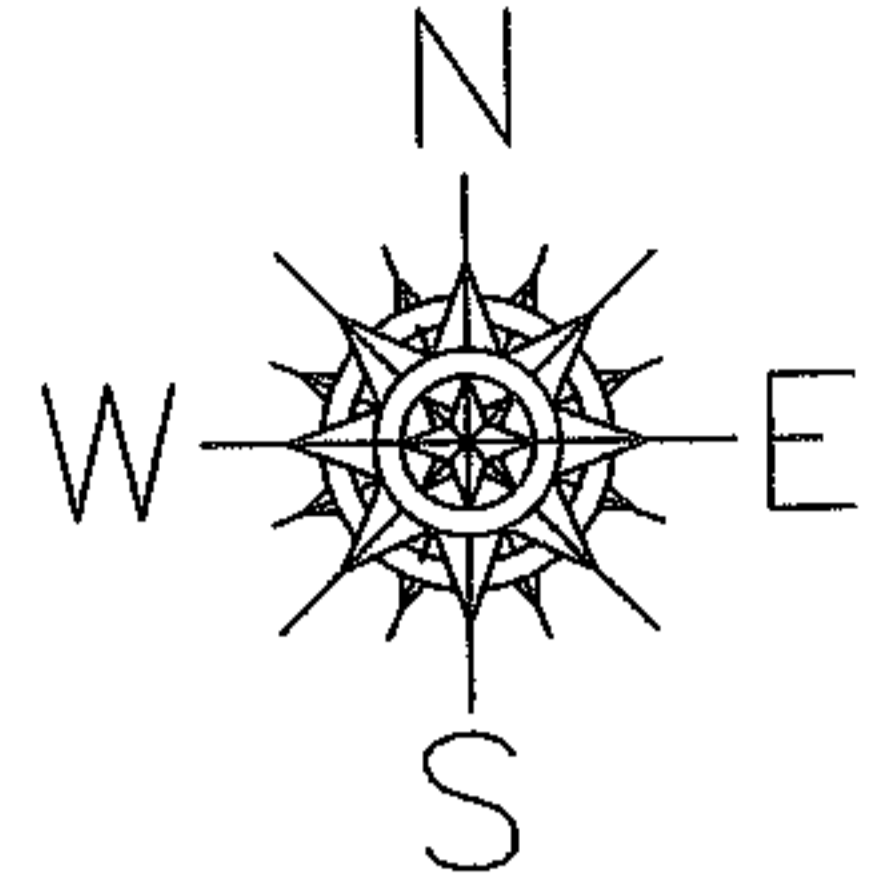
PARENT PARCEL: 11-00-062-000-004

CHILD PARCEL: --SAME--

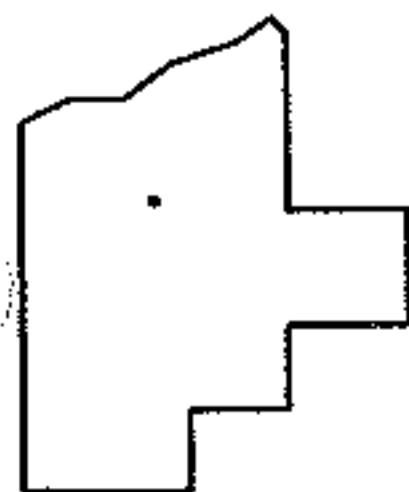
STARTING POINT:

NO. 01099-A

AC. CORR.
PER DEED



NOT TO SCALE



SPLITS/DEEDS PROCESSED
LORAIN COUNTY TAX MAP DEPARTMENT
226 MIDDLE AVE. ELYRIA, OHIO

SURVEYED BY:	N/A
CLOSURE:	N/A
MAP PAGE(S):	11-00-062-B
APPROVED BY:	DRH
DATE:	2/2/2005
SCALE:	1" = 300
PRIOR INSTRUMENT:	