

RASTER

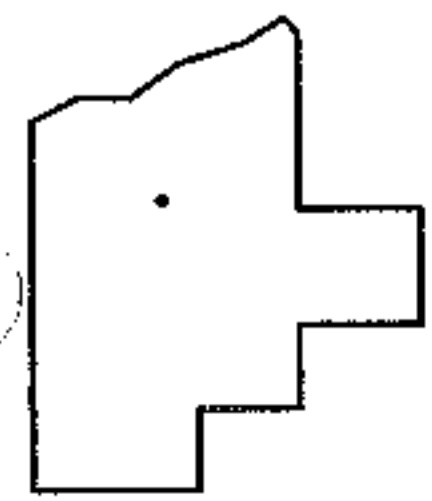
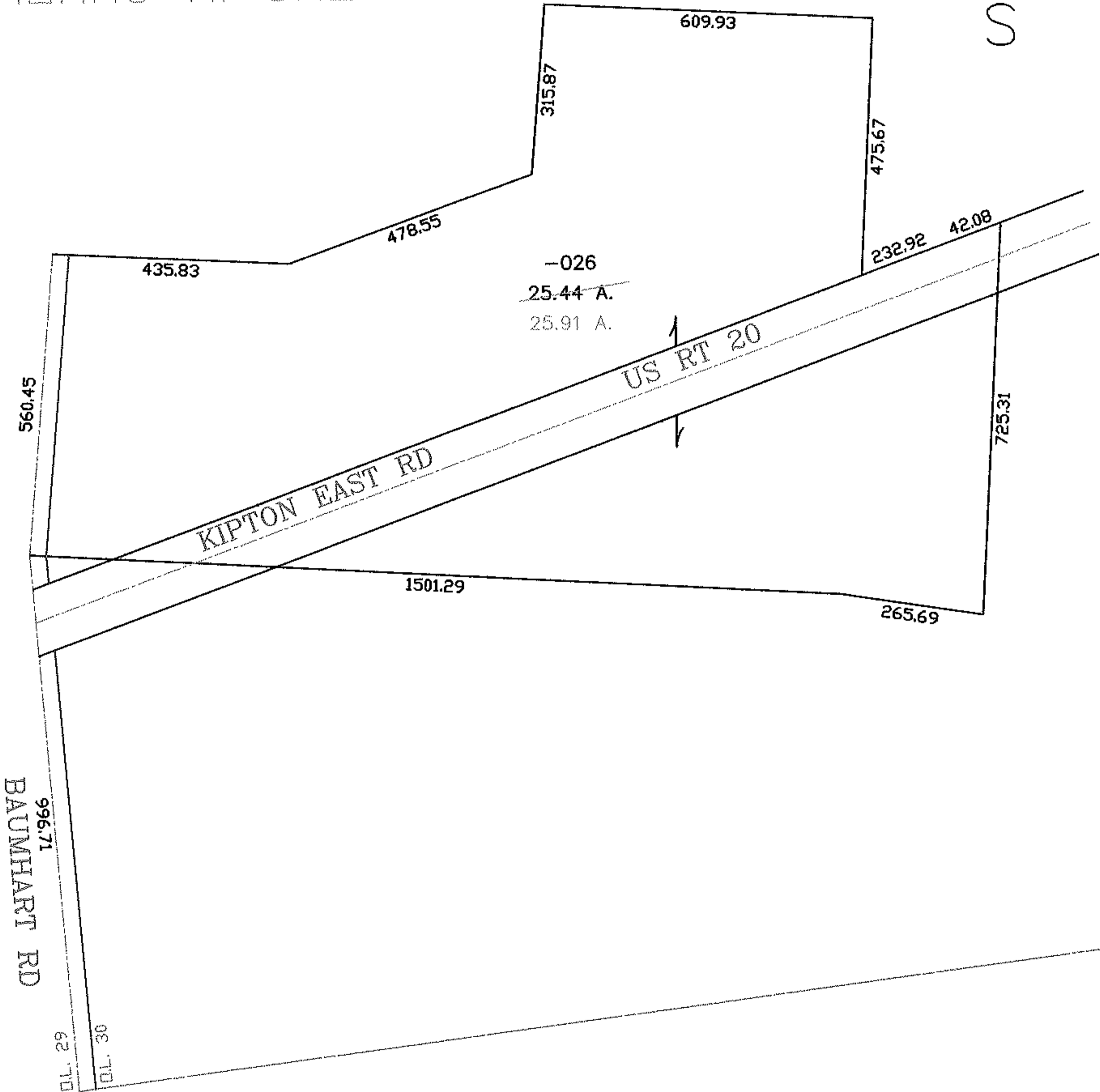
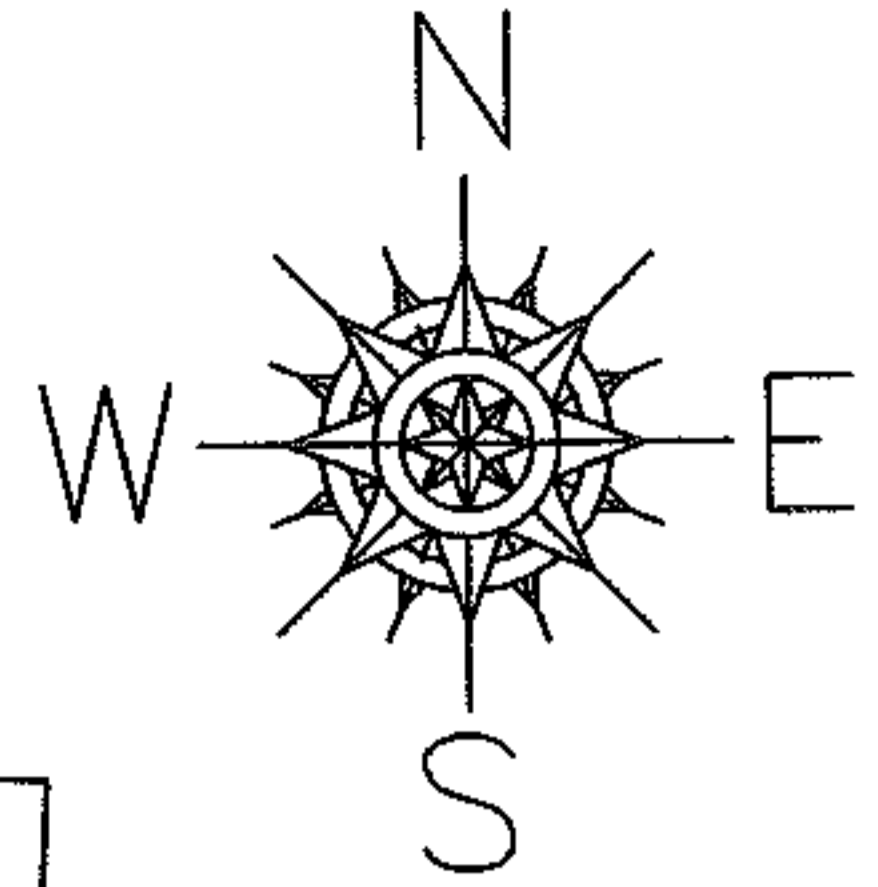
PARENT PARCEL: 13-11-030-000-026

NO. 01094-D

CHILD PARCEL: --SAME--

STARTING POINT: SW CORNER OF O.L. 30

AC. CORR  
PER SURVEY  
THOMAS M. SNEZEK



**SPLITS/DEEDS PROCESSED**  
LORAIN COUNTY TAX MAP DEPARTMENT  
226 MIDDLE AVE. ELYRIA, OHIO

SURVEYED BY: THOMAS M. SNEZEK  
CLOSURE: 1:10,000  
MAP PAGE(S): 13-11-030  
APPROVED BY: DRH DATE: 1/11/2005  
SCALE: 1" = 300' PRIOR INSTRUMENT: DV 1123/501