

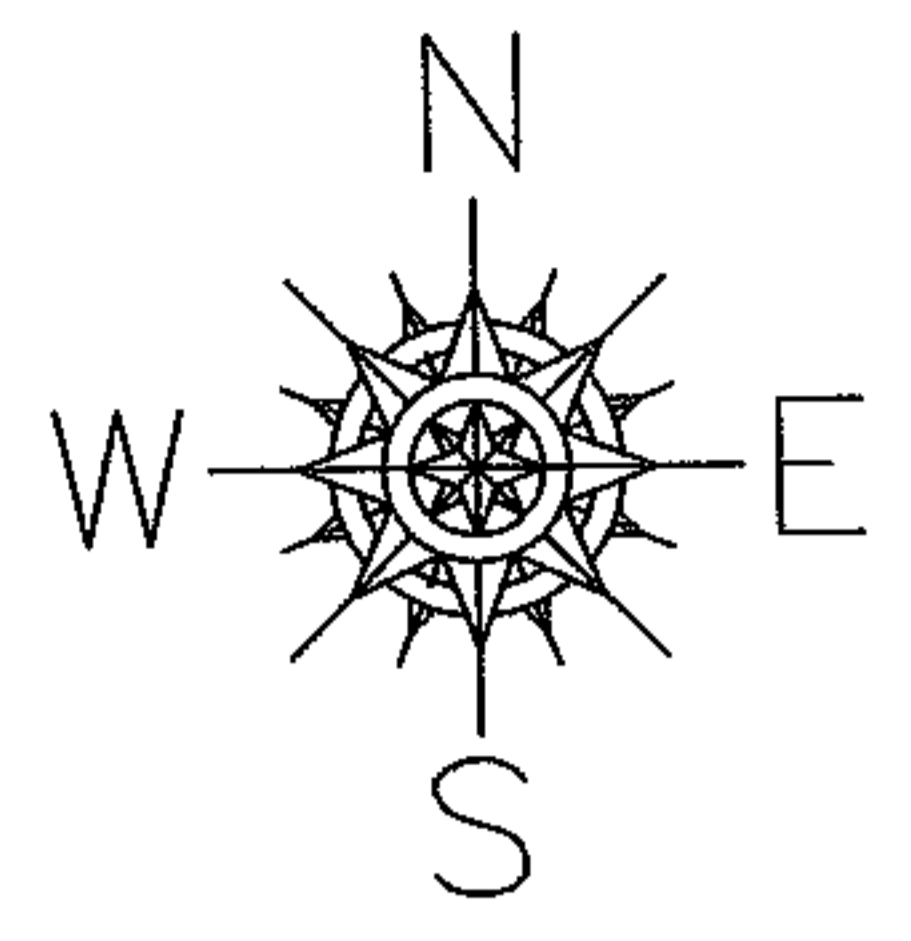
RASER

PARENT PARCEL: 02-02-029-101-021

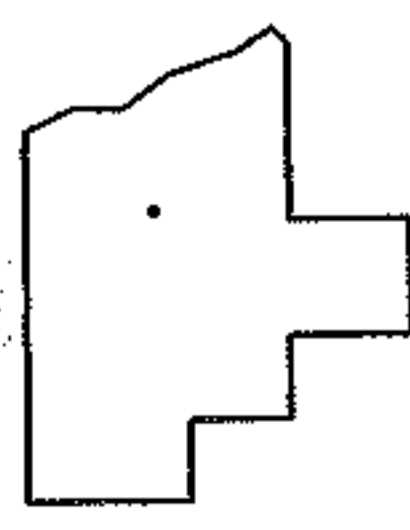
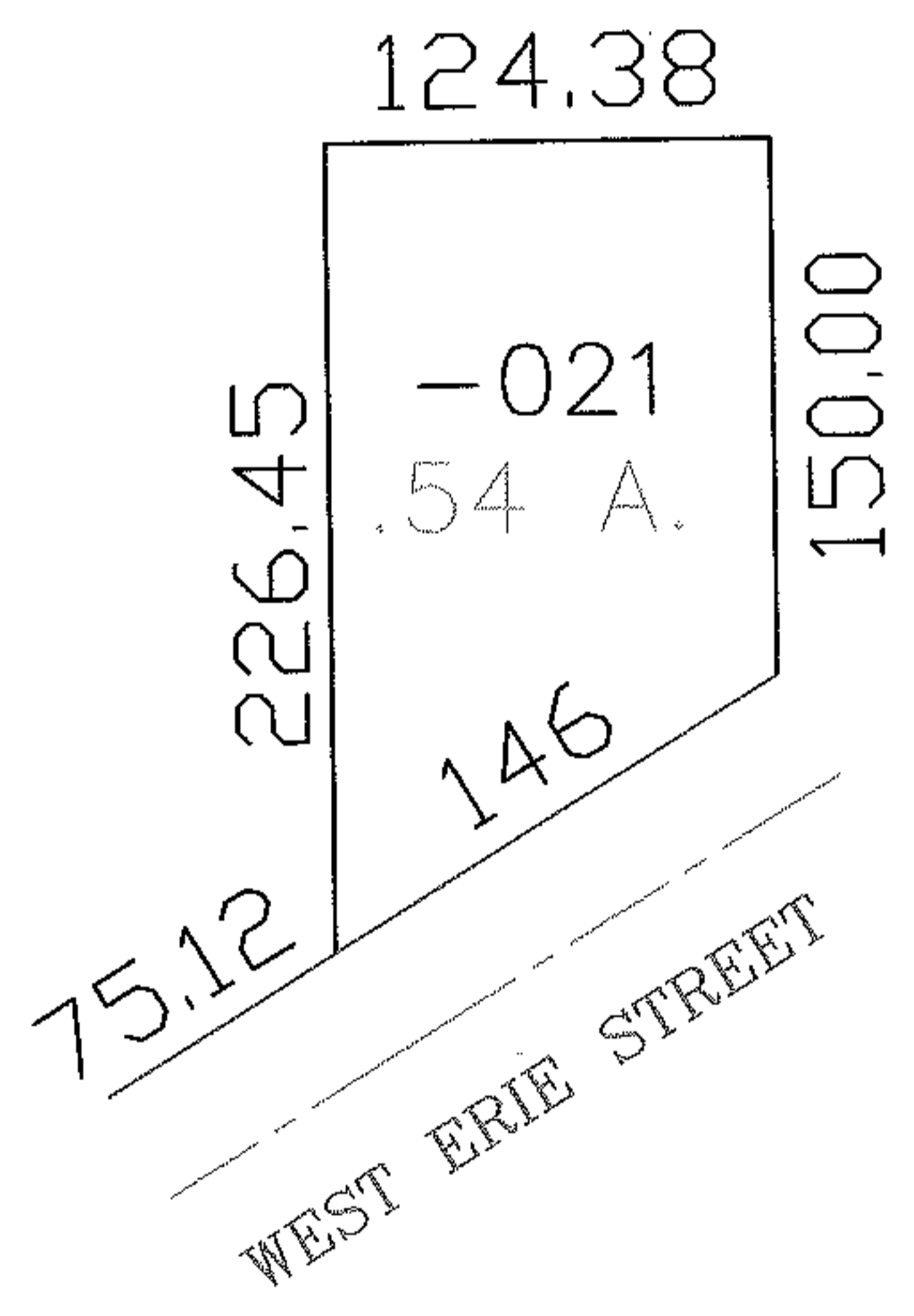
NO. 01092-X

CHILD PARCEL: --SAME--

STARTING POINT:



AC. CORR.  
PER SURVEY  
EDWARD B. DUDLEY III



**SPLITS/DEEDS PROCESSED**  
LORAIN COUNTY TAX MAP DEPARTMENT  
226 MIDDLE AVE. ELYRIA, OHIO

SURVEYED BY: EDWARD B. DUDLEY III  
CLOSURE: 1:10,000  
MAP PAGE(S): 02-02-029  
APPROVED BY: DRH DATE: 12/30/2004  
SCALE: 1" = 100' PRIOR INSTRUMENT: