

RASTER

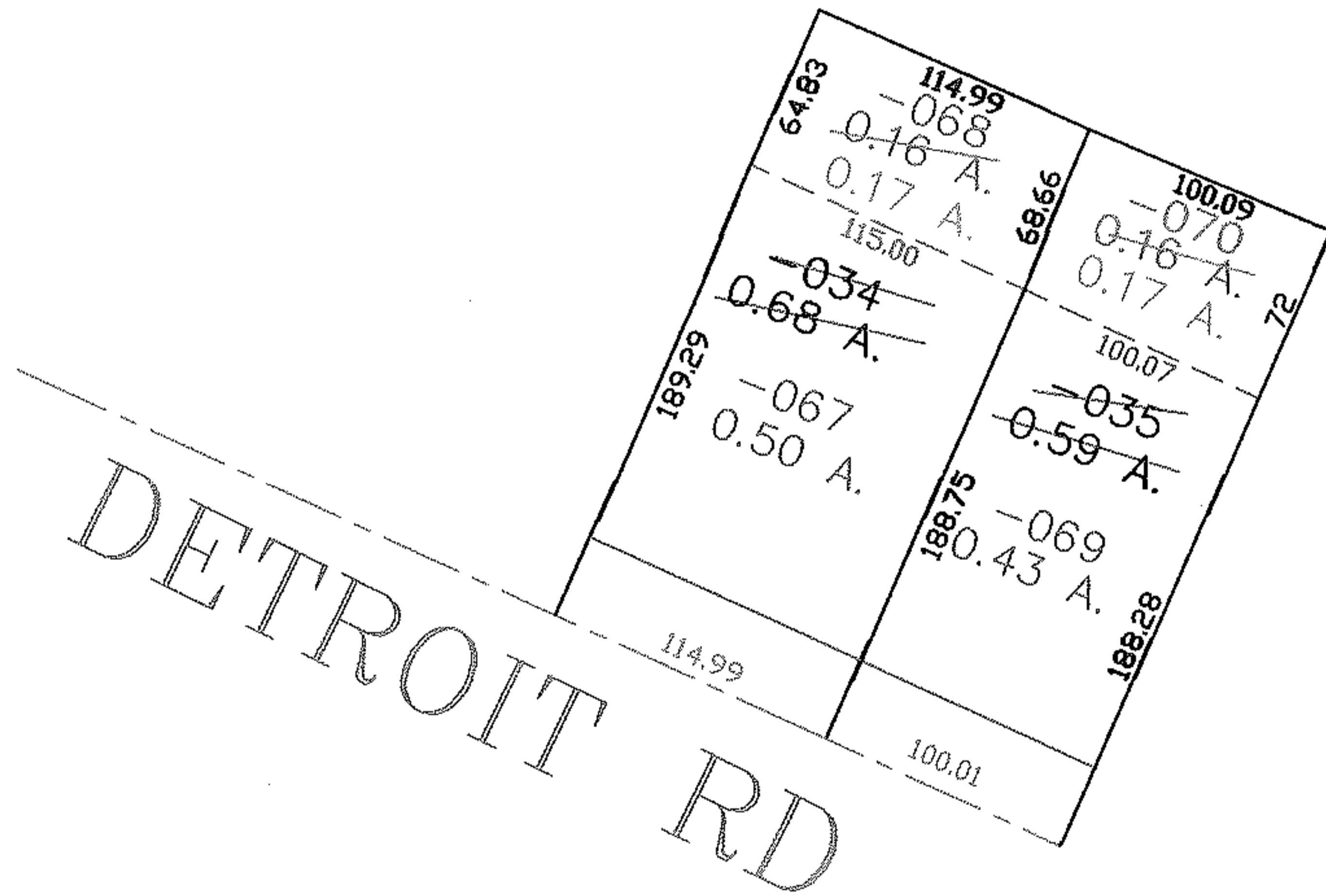
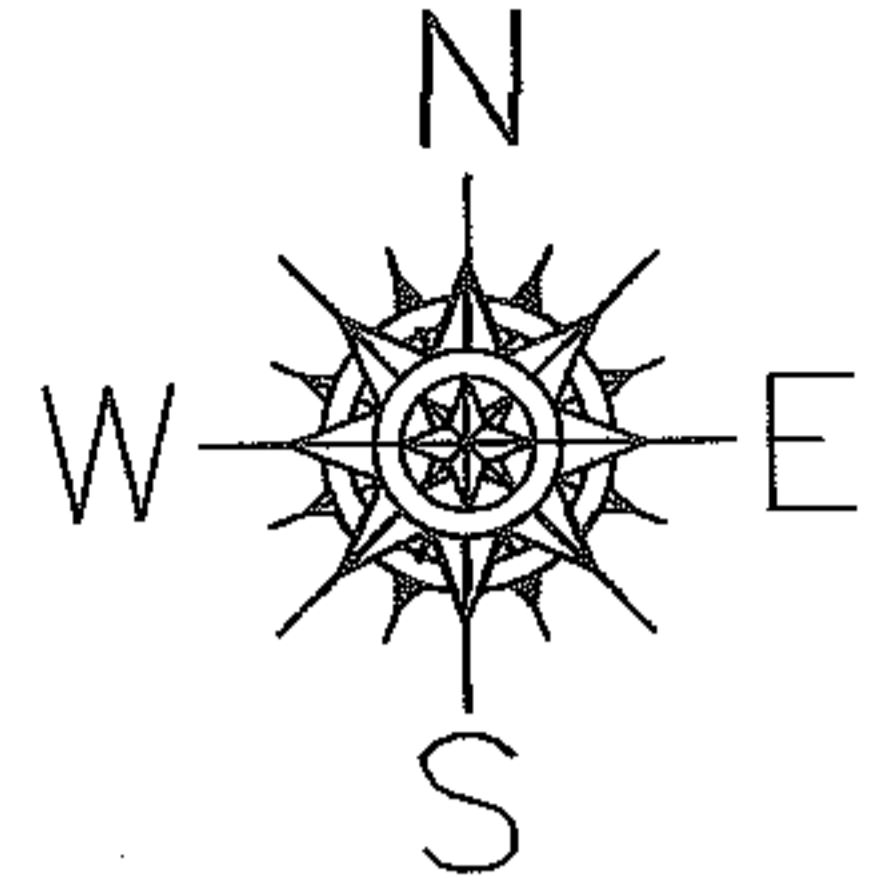
PARENT PARCEL: 04-00-015-103-034, -035

CHILD PARCEL: 04-00-015-103-067, -068, -069, -070

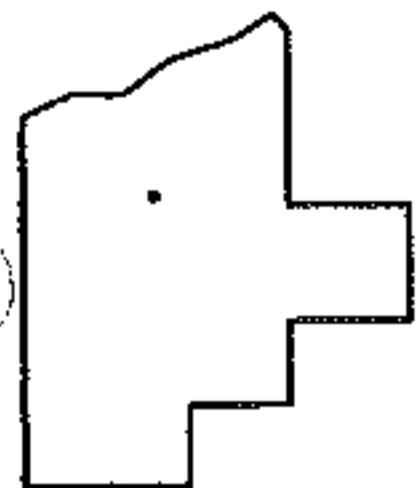
NO. 01085-U

STARTING POINT:

UNCOMBINATION
AC. CORR. PER
SURVEY
MARTINI-HAPONEK
JUNE 1983



PRIOR INSTRUMENT: 1333/421



SPLITS/DEEDS PROCESSED

LORAIN COUNTY TAX MAP DEPARTMENT
226 MIDDLE AVE. ELYRIA, OHIO

SURVEYED BY: MARTINI-HAPONEK
CLOSURE: 1:10,000
MAP PAGE(S): 04-00-015-B
APPROVED BY: DRH DATE: 12/10/2004
SCALE: 1" = 100 PRIOR INSTRUMENT: 1331/472