

RASTER

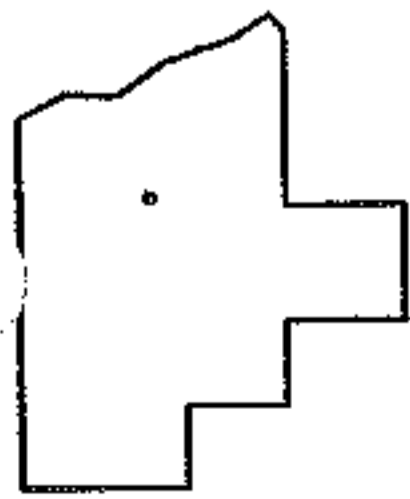
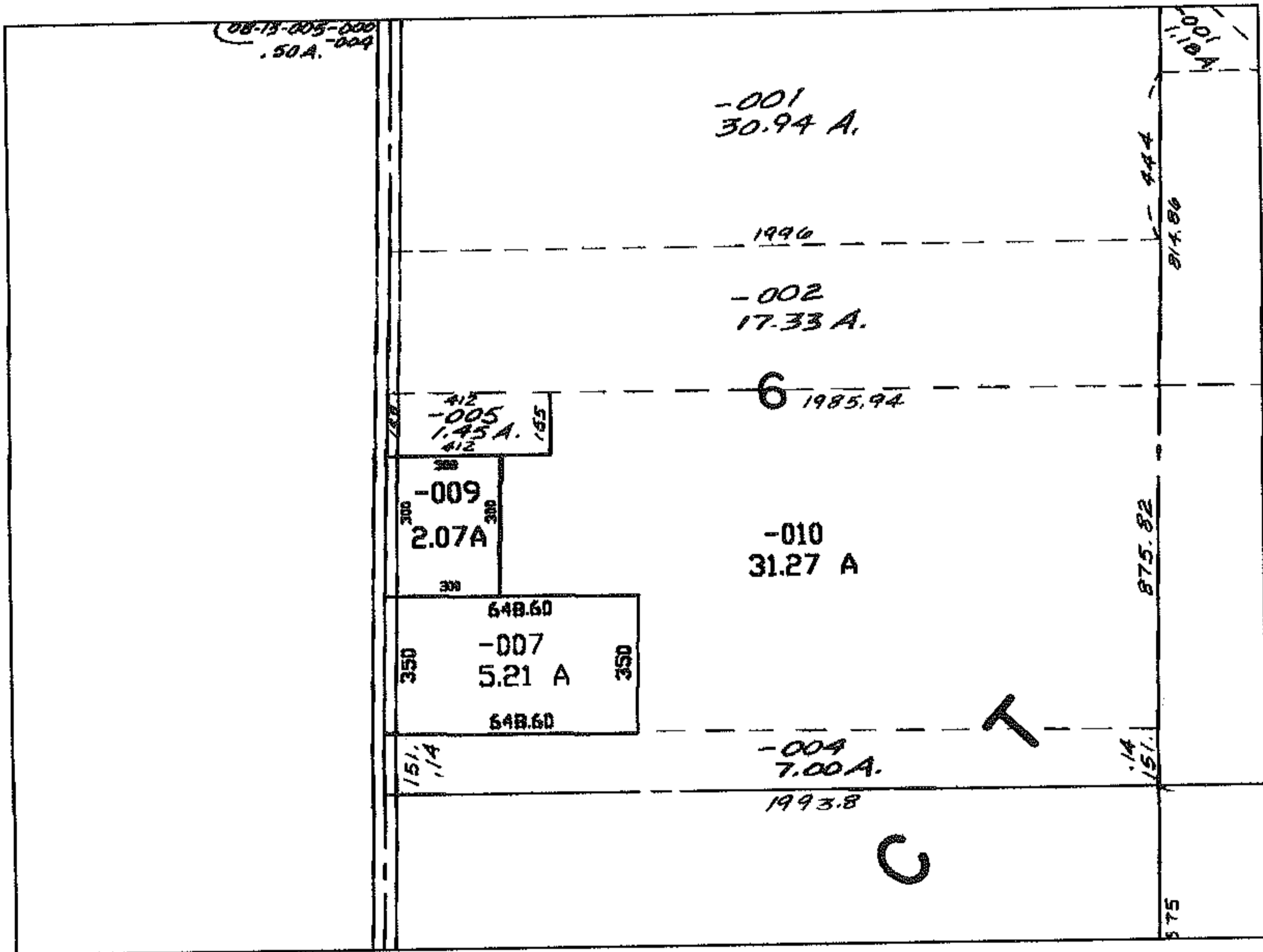
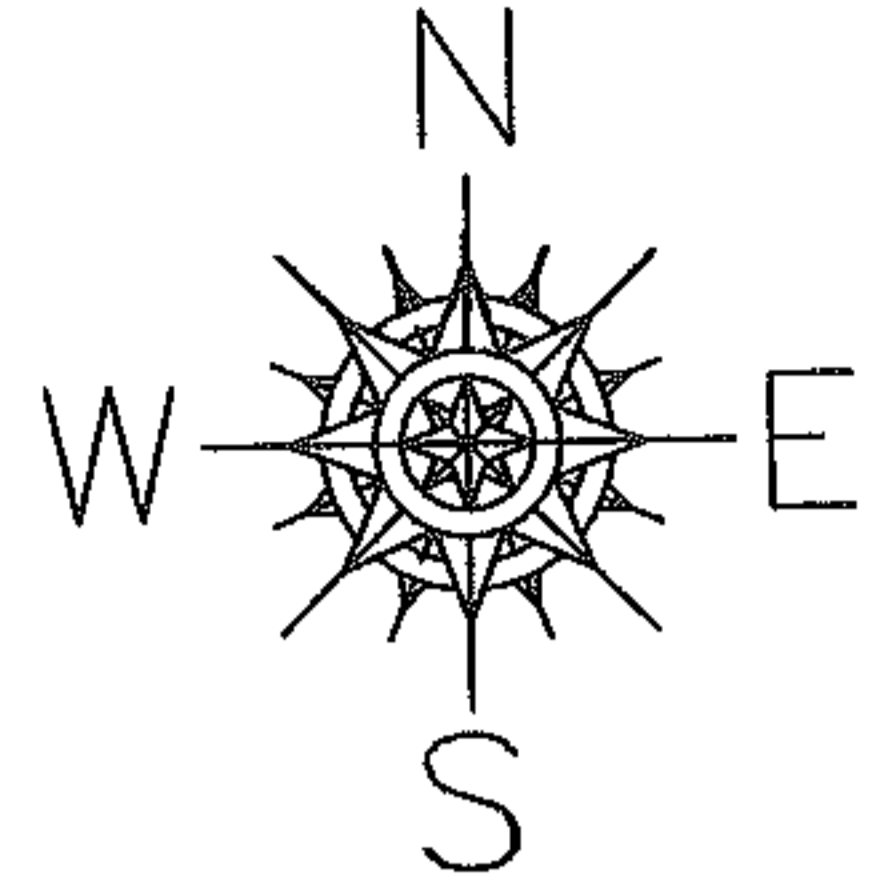
PARENT PARCEL: 08-13-006-000-009

NO. 01071-C

CHILD PARCEL: --SAME--

STARTING POINT: INT CL VERMILLION RD AND SW CORNER O.L. 6

# MAP CORR PER SURVEY



**SPLITS/DEEDS PROCESSED**  
**LORAIN COUNTY TAX MAP DEPARTMENT**  
 226 MIDDLE AVE. ELYRIA, OHIO

SURVEYED BY: EARL HUNTER  
 CLOSURE: N/A  
 MAP PAGE(S): 8-G  
 APPROVED BY: DRH DATE: 11/16/2004  
 SCALE: 1" = 200 PRIOR INSTRUMENT: 20020849414