

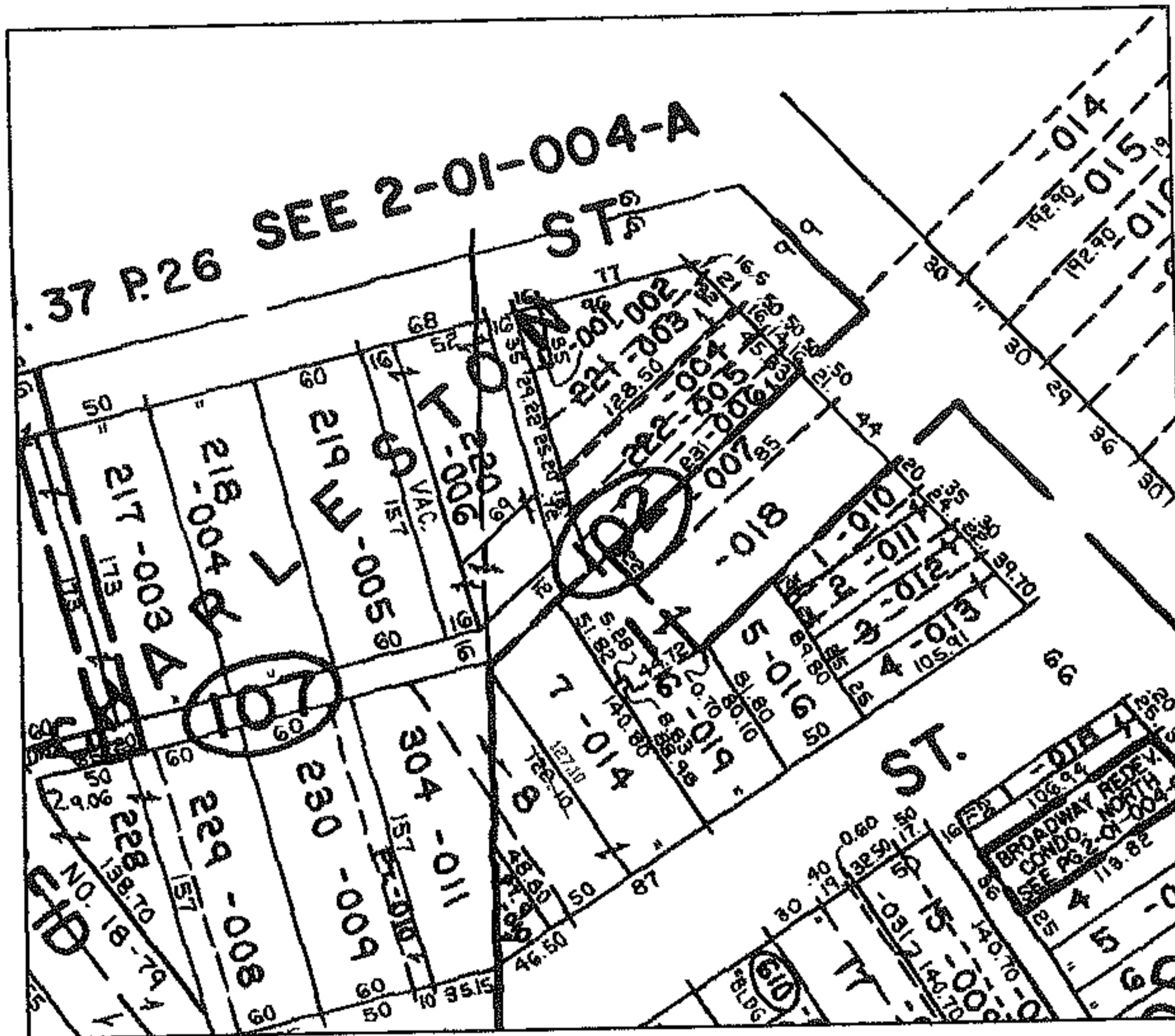
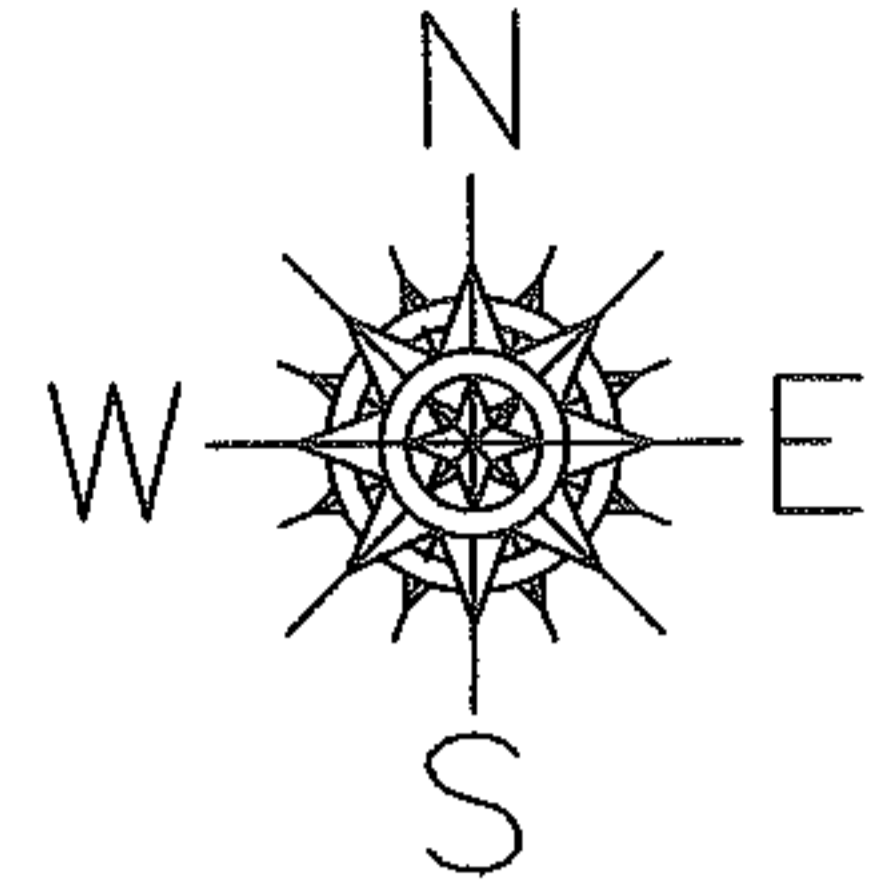
RASTER

PARENT PARCEL: 02-01-004-102-014

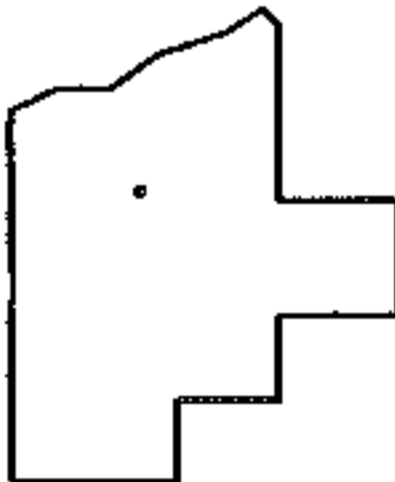
CHILD PARCEL: --SAME--

STARTING POINT:

NO. 01068-C



DEPTH CORR PER MAP



SPLITS/DEEDS PROCESSED

LORAIN COUNTY TAX MAP DEPARTMENT
226 MIDDLE AVE. ELYRIA, OHIO

SURVEYED BY: N/A
CLOSURE: N/A
MAP PAGE(S): 02-01-004-B
APPROVED BY: DRH DATE: 11/9/2004
SCALE: 1" = 200' PRIOR INSTRUMENT: