

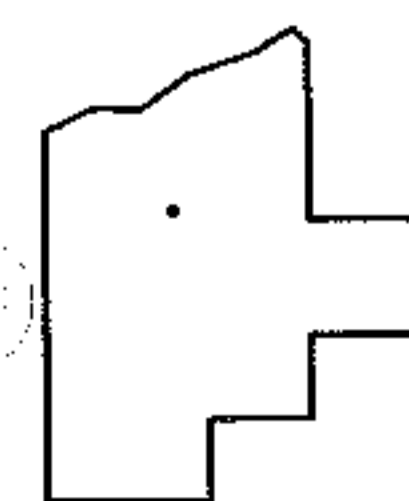
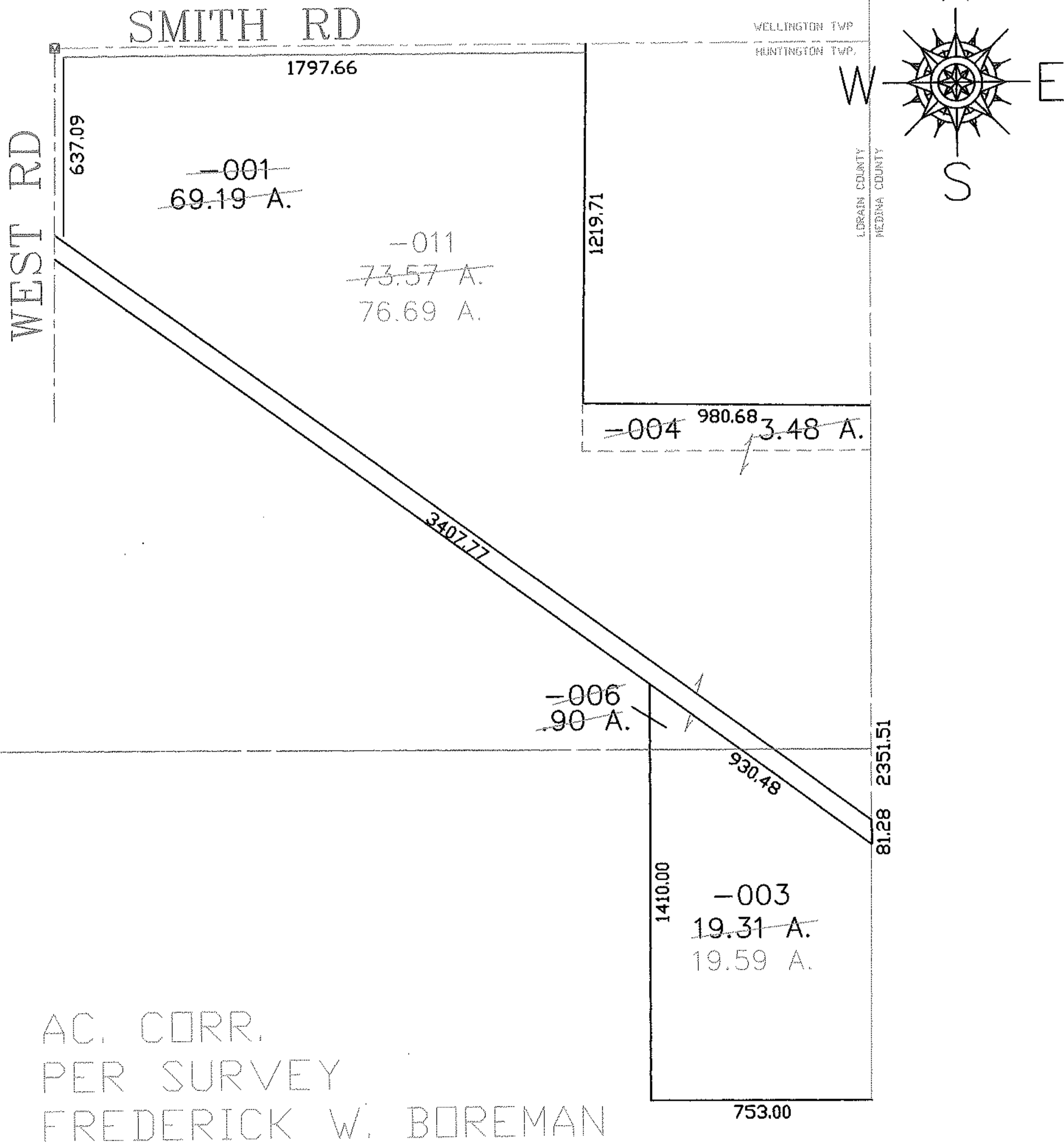
RASTER

PARENT PARCEL: 21-17-001-000-001, -004, -006, 21-00-006-000-003

CHILD PARCEL: 21-17-001-000-011, 21-17-006-000-003

STARTING POINT: INT SMITH RD AND CL WEST RD

NO. 01065-D



SPLITS/DEEDS PROCESSED

LORAIN COUNTY TAX MAP DEPARTMENT
226 MIDDLE AVE. ELYRIA, OHIO

SURVEYED BY: FREDERICK W. BOREMAN
 CLOSURE: 1:10,000
 MAP PAGE(S): 21-D
 APPROVED BY: DRH DATE: 10/21/2004
 SCALE: 1" = 500 PRIOR INSTRUMENT: _____