

RASTER

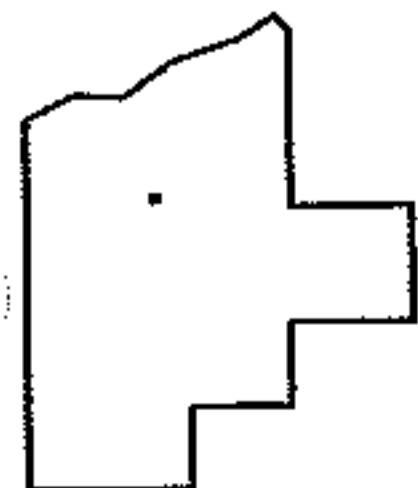
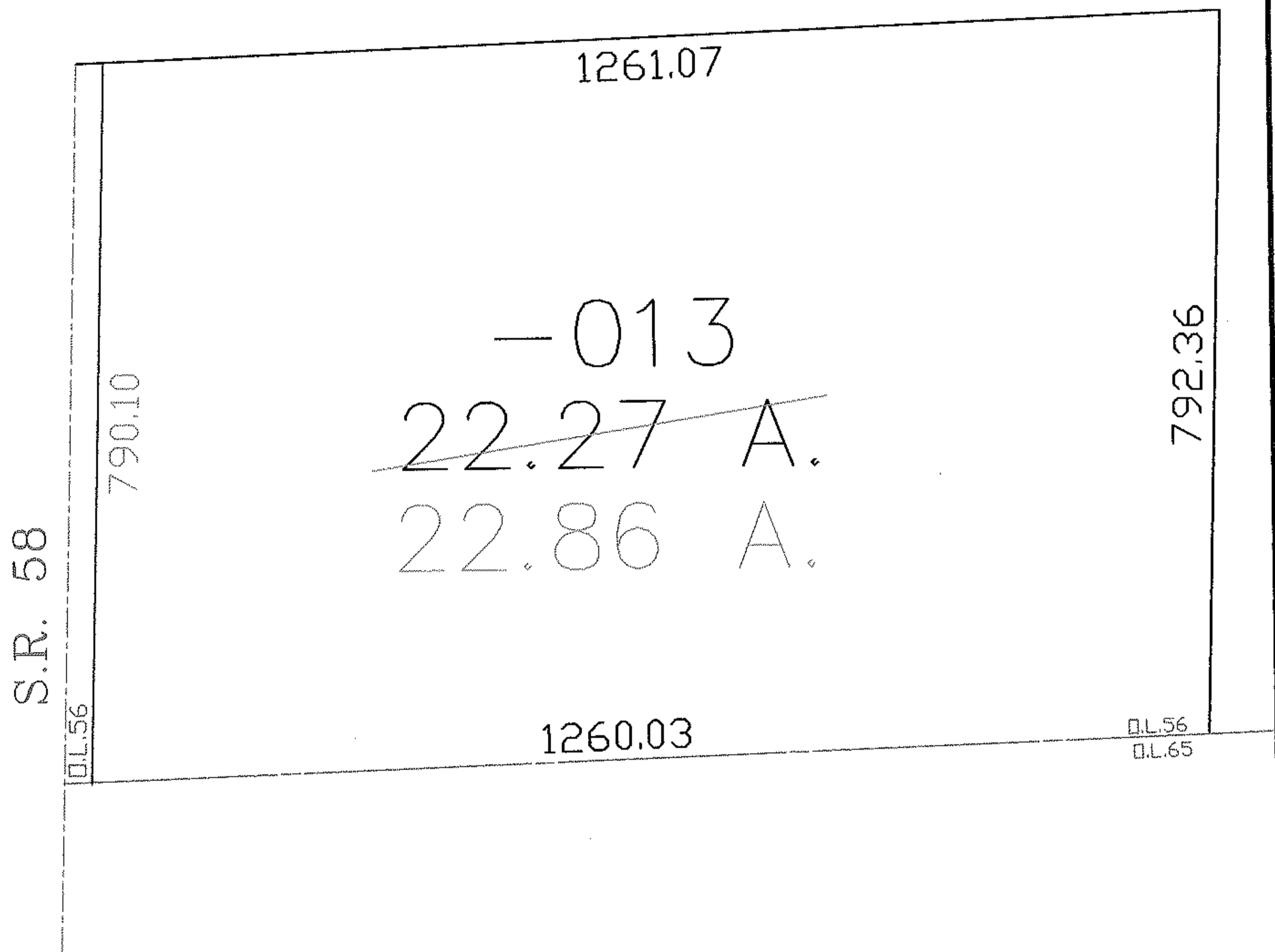
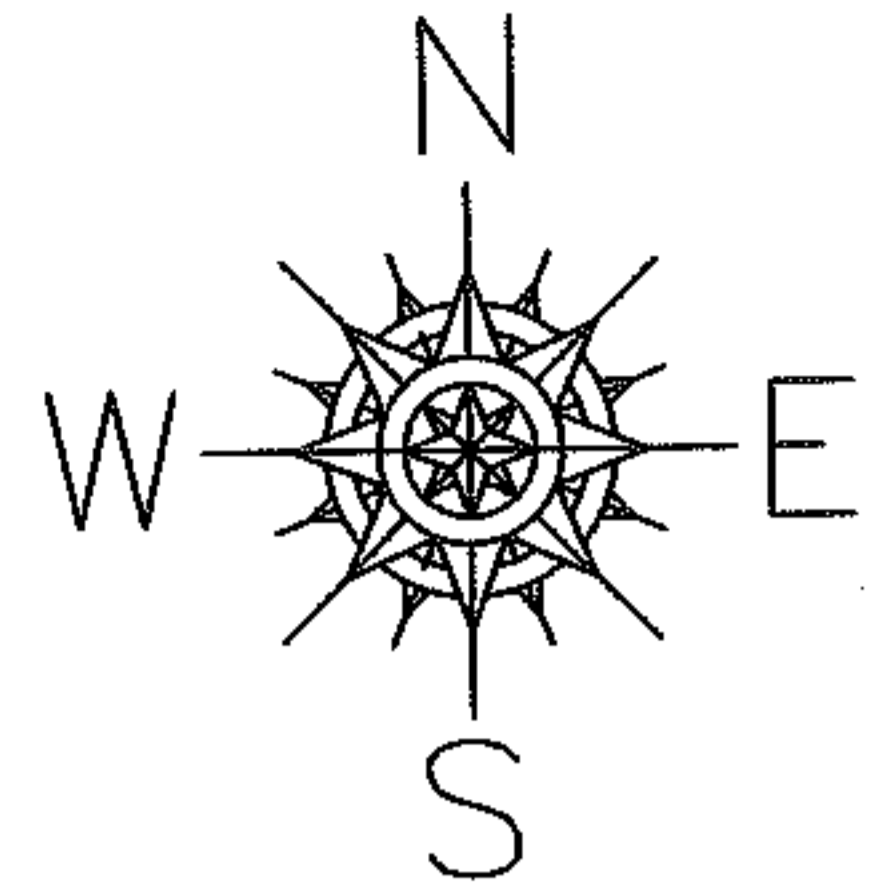
PARENT PARCEL: 14-00-056-000-013

CHILD PARCEL: --SAME--

STARTING POINT: SW CORNER OF O.L. 56

NO. 01053-A

AC. CORR.
PER SURVEY
ALEX KELSER



SPLITS/DEEDS PROCESSED
LORAIN COUNTY TAX MAP DEPARTMENT
226 MIDDLE AVE. ELYRIA, OHIO

SURVEYED BY: ALEX KELSER
CLOSURE: 1:10,000
MAP PAGE(S): 14-00-056-A
APPROVED BY: DRH DATE: 9/16/2004
SCALE: 1" = 200' PRIOR INSTRUMENT: