

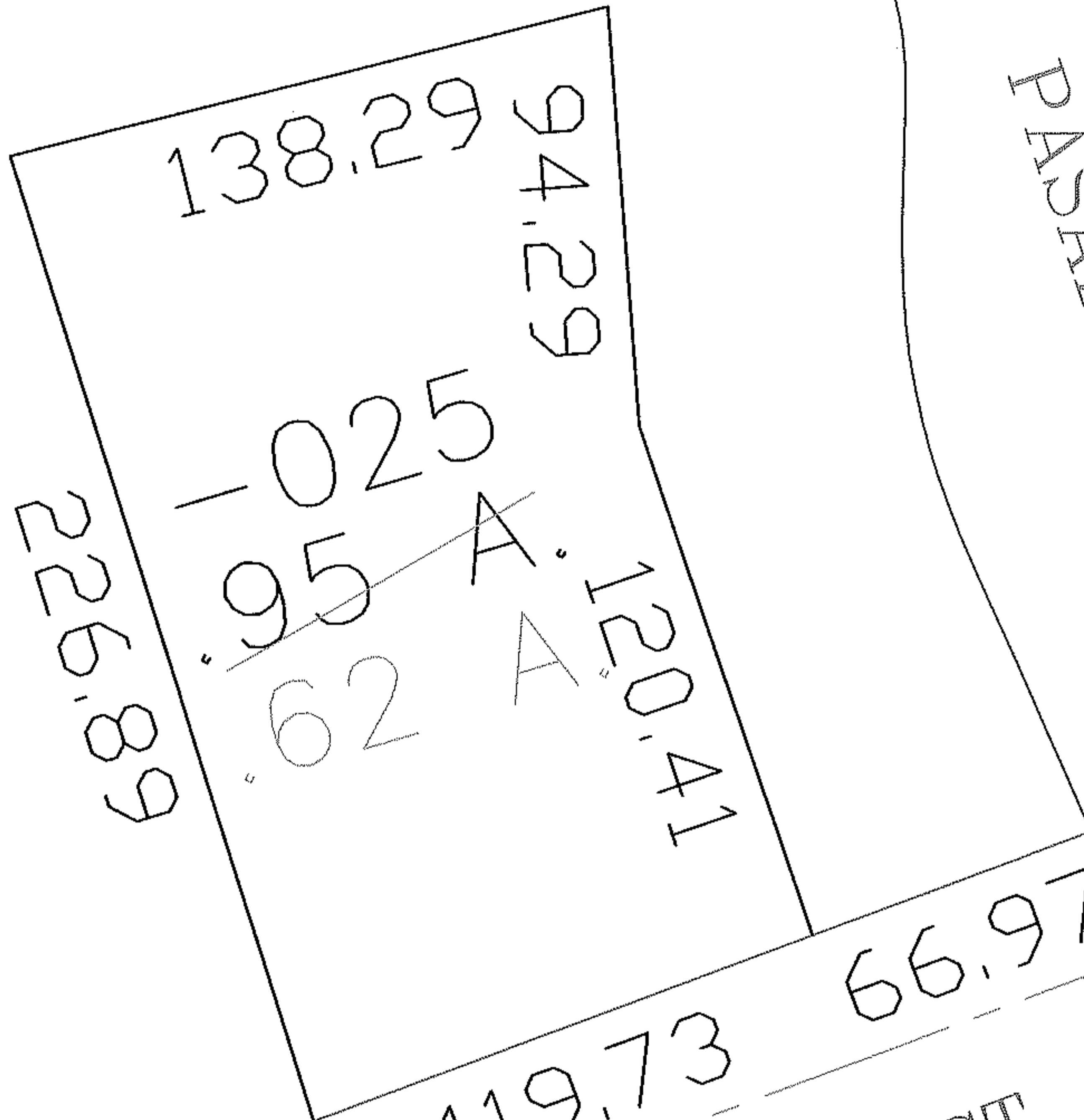
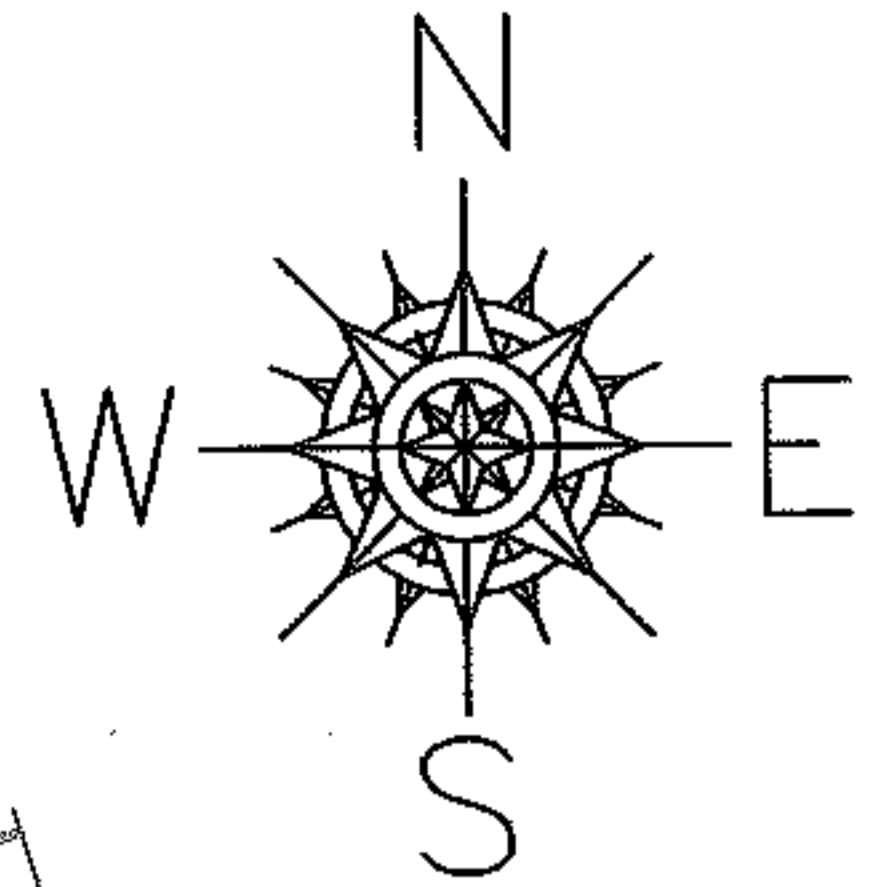
RASTER

PARENT PARCEL: 06-25-034-104-025

CHILD PARCEL: --SAME--

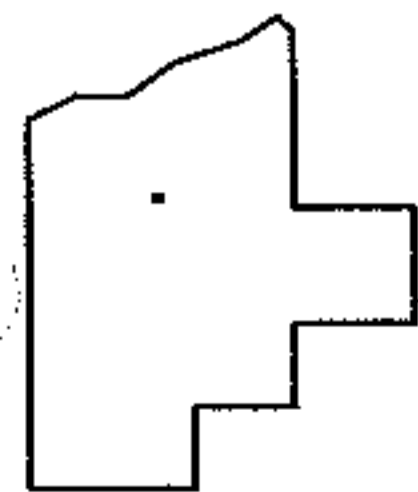
STARTING POINT: INT N ROW CLEVELAND ST W EOW PASADENA AVE

NO. 01043-A



PASADENA AVE

CLEVELAND ST



SPLITS/DEEDS PROCESSED

LORAIN COUNTY TAX MAP DEPARTMENT
226 MIDDLE AVE. ELYRIA, OHIO

SURVEYED BY: ALEX KELSER

CLOSURE: 1:10,000

MAP PAGE(S): 6-104

APPROVED BY: DRH DATE: 8/24/2004

SCALE: 1" = 50' PRIOR INSTRUMENT: 20040009615

Filed 8/25/04