

RASTER

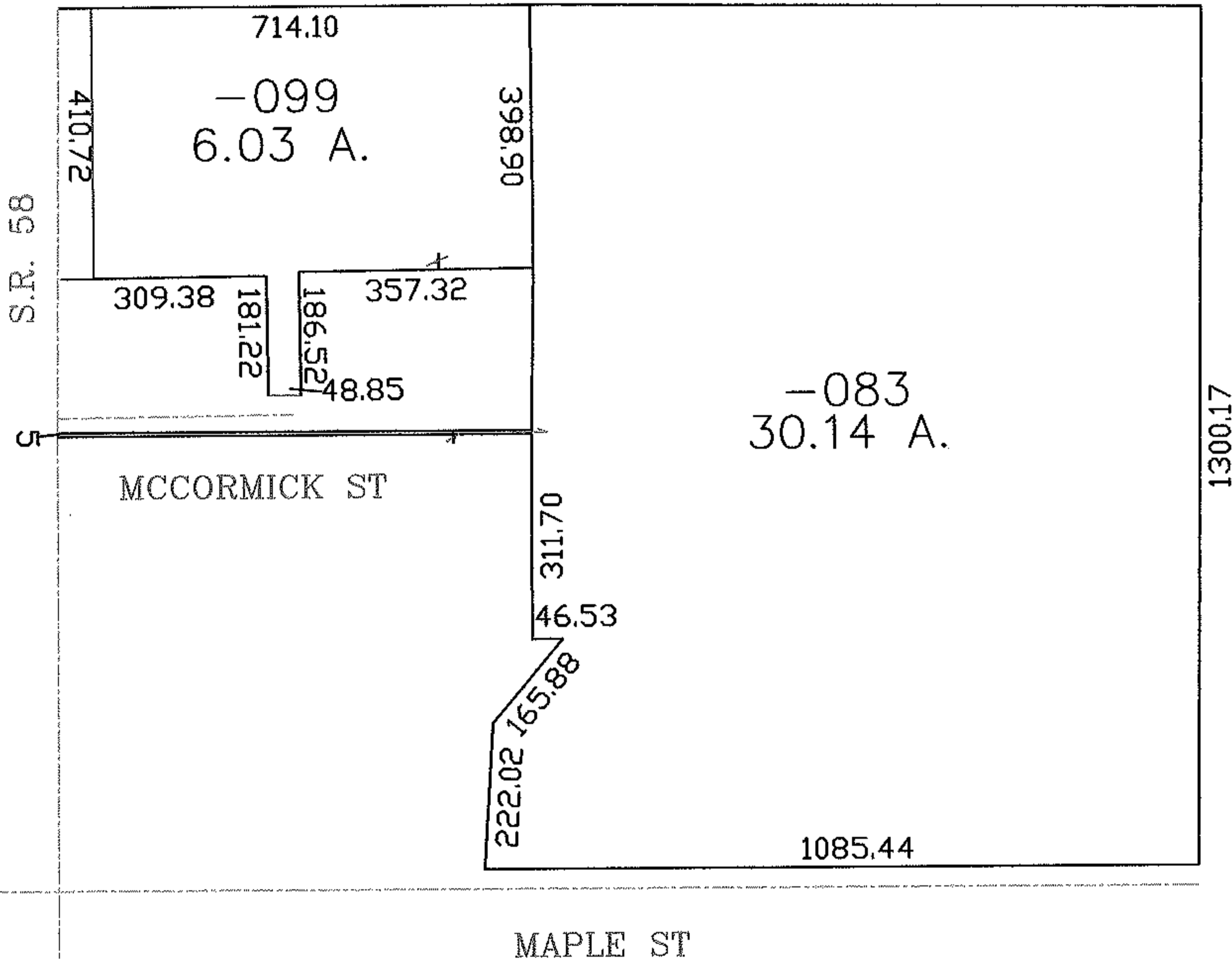
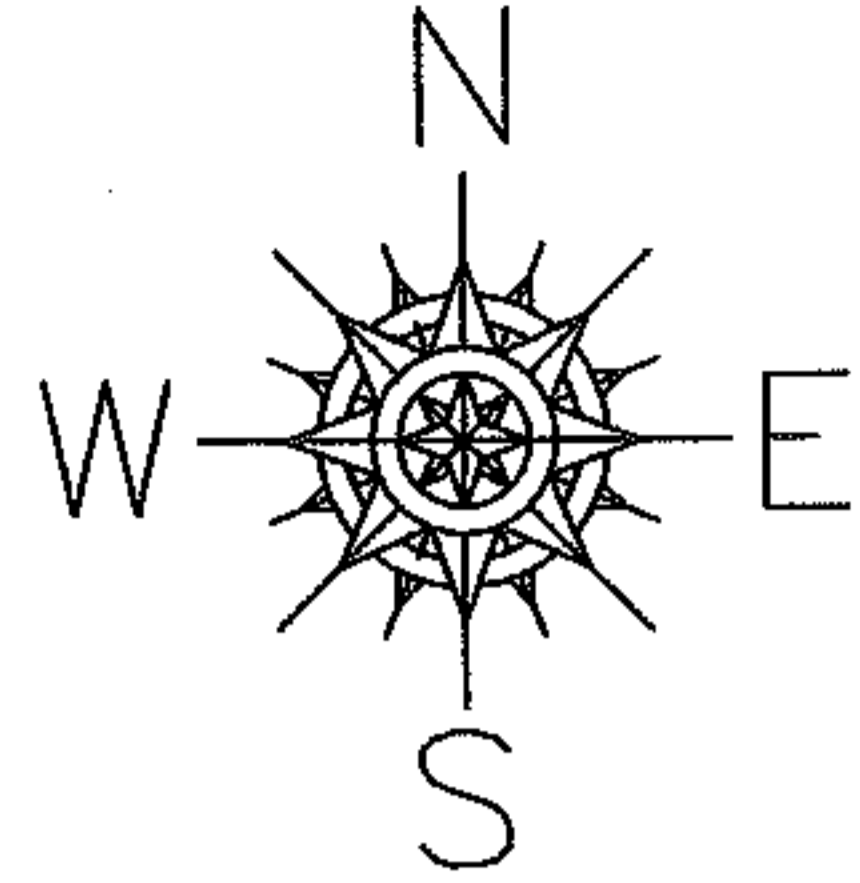
PARENT PARCEL: 18-00-020-000-083

NO. 01038-X

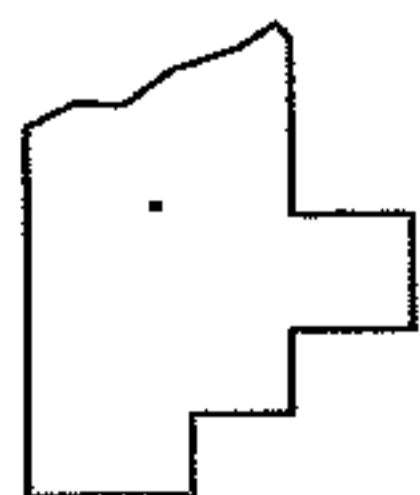
CHILD PARCEL: --SAME--

STARTING POINT:

MAP CORR
PER DEED



Sheet 1 of 2



SPLITS/DEEDS PROCESSED

LORAIN COUNTY TAX MAP DEPARTMENT
226 MIDDLE AVE. ELYRIA, OHIO

SURVEYED BY: N/A
 CLOSURE: N/A
 MAP PAGE(S): 18-00-020-C
 APPROVED BY: DRH DATE: 8/13/2004
 SCALE: 1" = 300 PRIOR INSTRUMENT: