

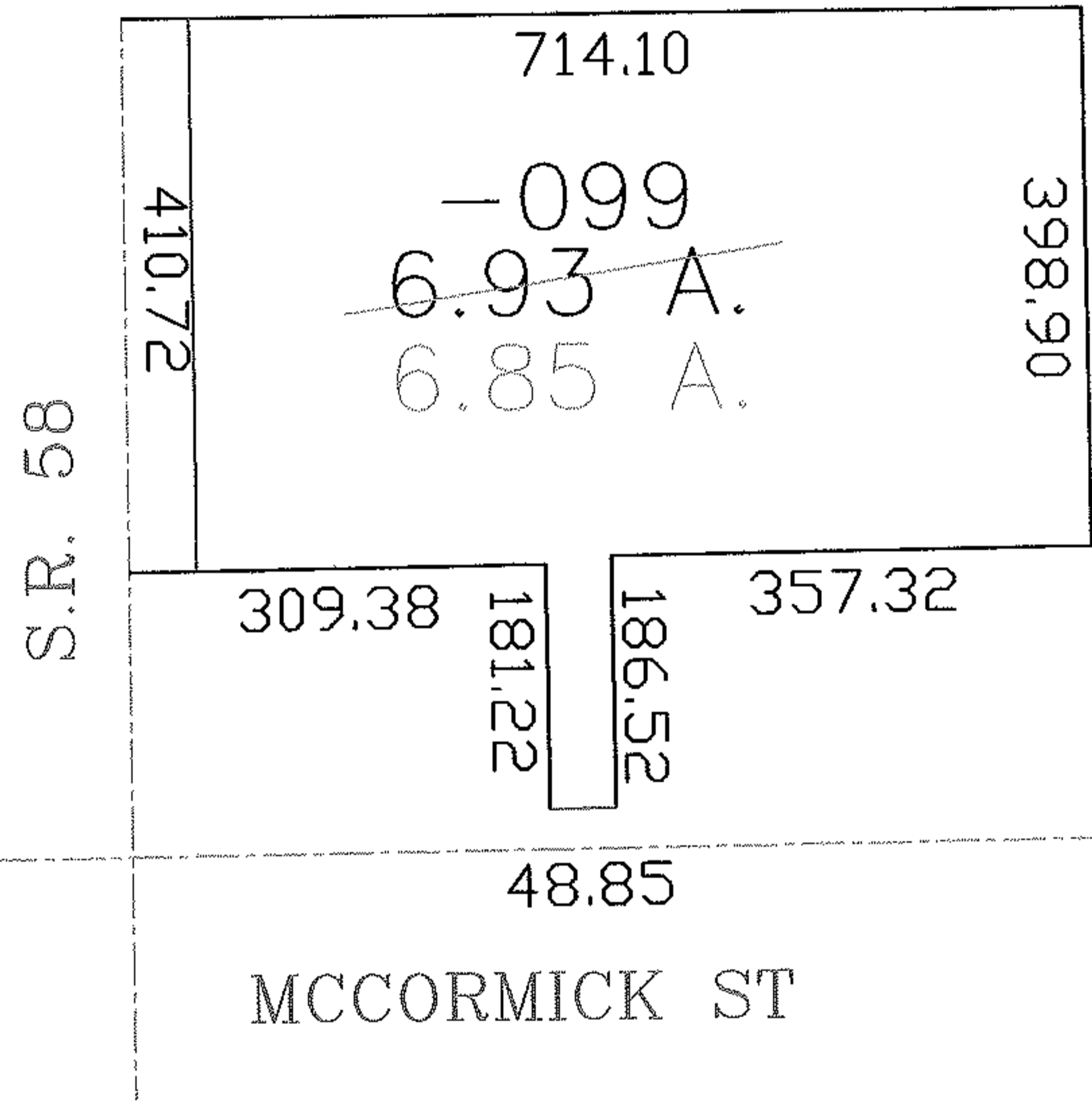
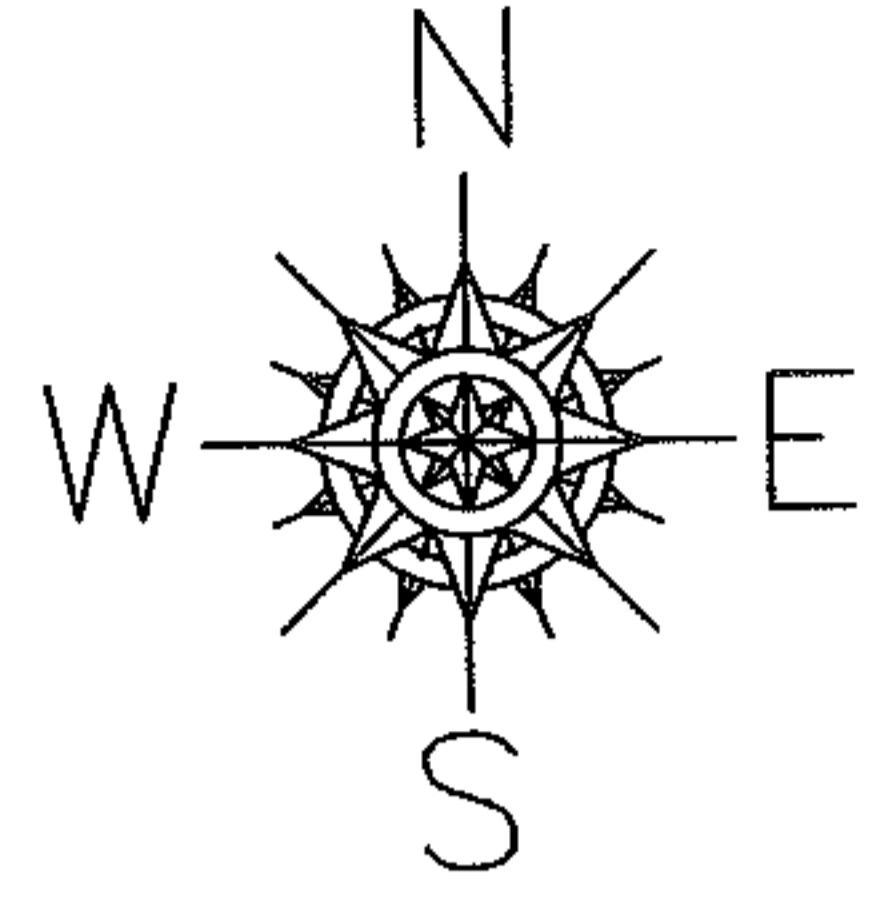
RASTER

PARENT PARCEL: 18-00-020-000-099

CHILD PARCEL: --SAME--

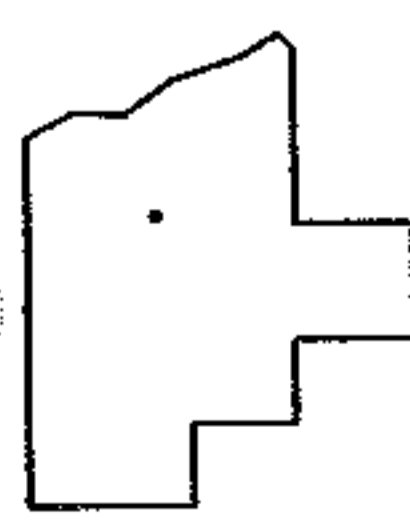
STARTING POINT: INT CL SR 58 AND CL MCCORMICK ST

NO. 01038-X



AC. CORR.  
PER SURVEY  
ALEX KELSER

Sheet 2 of 2



**SPLITS/DEEDS PROCESSED**  
LORAIN COUNTY TAX MAP DEPARTMENT  
226 MIDDLE AVE. ELYRIA, OHIO

SURVEYED BY: ALEX KELSER  
CLOSURE: 1:10.000  
MAP PAGE(S): 18-00-020-C  
APPROVED BY: DRH DATE: 8/13/2004  
SCALE: 1" = 200 PRIOR INSTRUMENT: 20020865098