

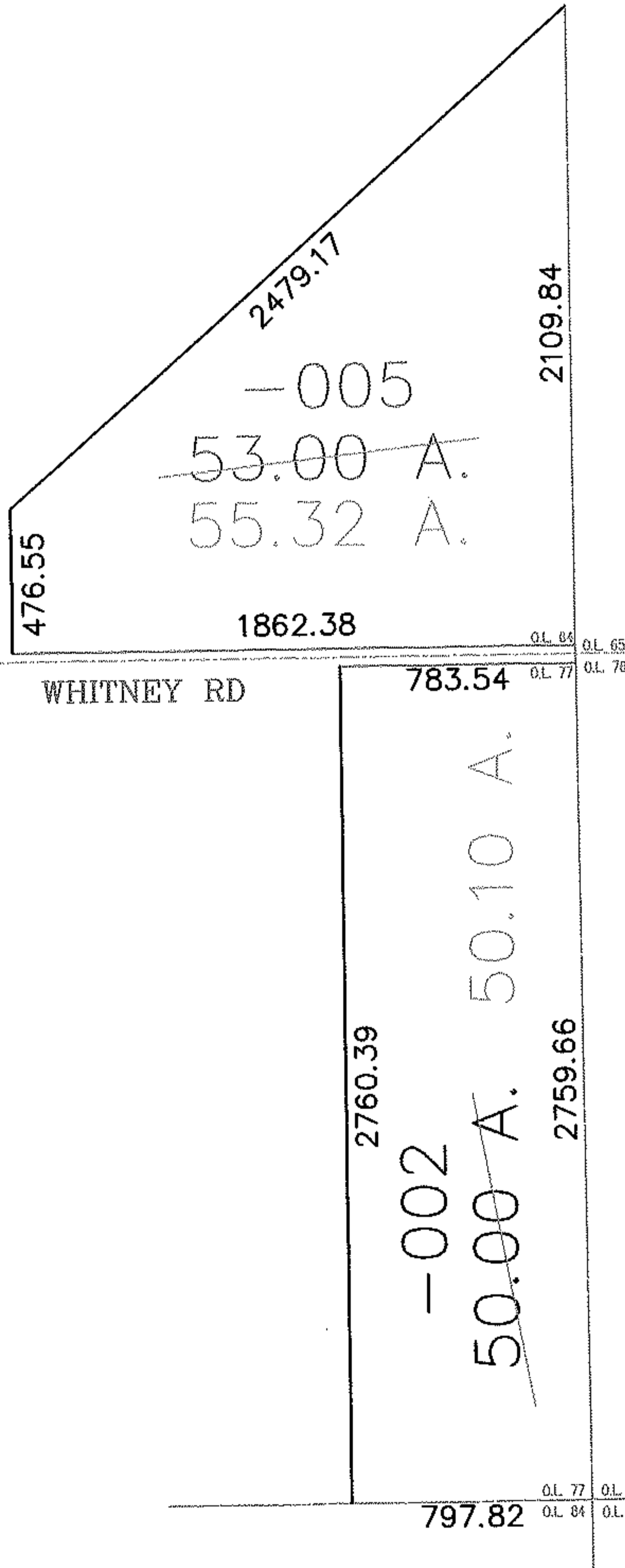
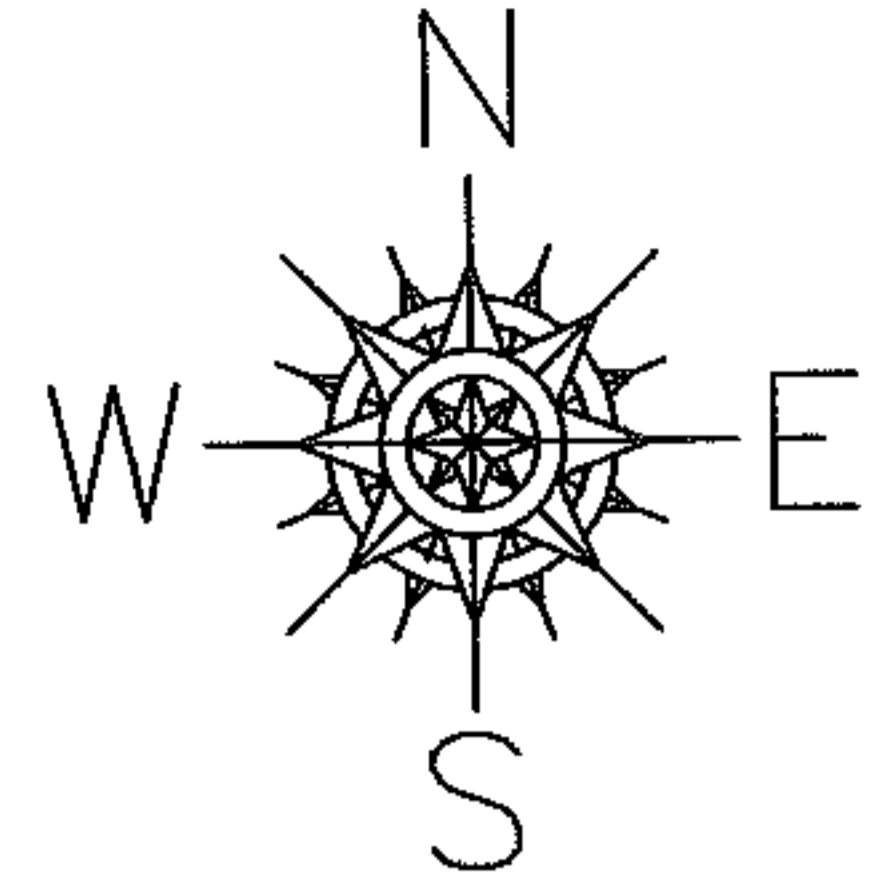
RASTER

NO. 01035-D

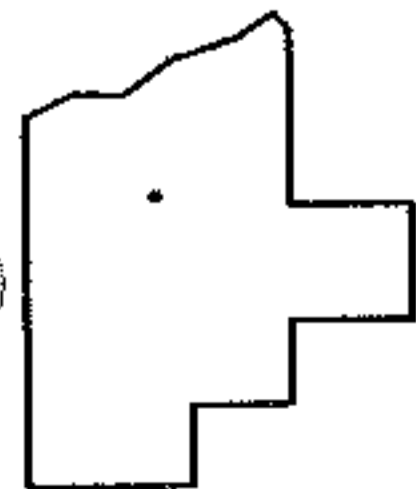
PARENT PARCEL: 15-00-064-000-005, 15-00-077-000-002

CHILD PARCEL: --SAME--

STARTING POINT: CL WHITNEY RD SE CORNER OL 64



AC. CORR.  
PER SURVEY  
ALEX KELSER



**SPLITS/DEEDS PROCESSED**

LORAIN COUNTY TAX MAP DEPARTMENT  
226 MIDDLE AVE. ELYRIA, OHIO

SURVEYED BY: ALEX KELSER  
CLOSURE: 1:10,000  
MAP PAGE(S): 15-00-064-B  
APPROVED BY: DRH DATE: 8/6/2004  
SCALE: 1" = 700 PRIOR INSTRUMENT: DV 395/504