

RASTER

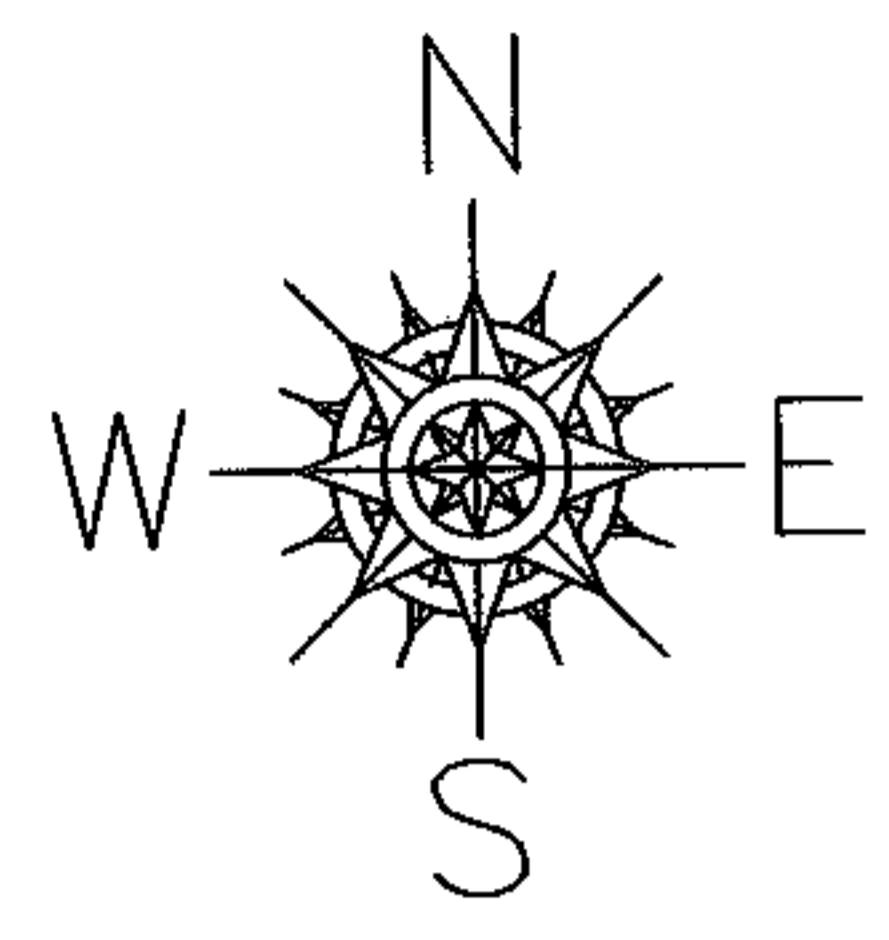
PARENT PARCEL: 04-00-008-104-101

NO. 01021-A

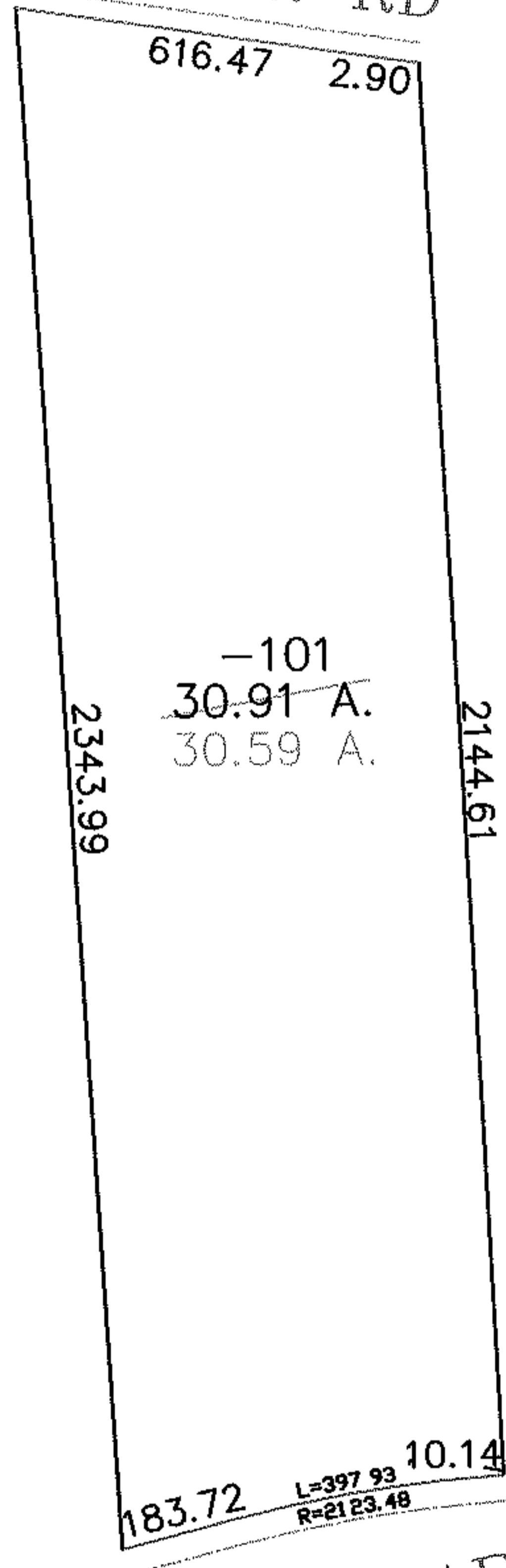
CHILD PARCEL: --SAME--

STARTING POINT: NW CORNER OF THE COLONIES SUB

PAGE 2 OF 2



WEBBER RD



AC. CORR.  
PER SURVEY  
W. ROBERT KUSMER

PIN OAK PARKWAY



**SPLITS/DEEDS PROCESSED**  
LORAIN COUNTY TAX MAP DEPARTMENT  
226 MIDDLE AVE. ELYRIA, OHIO

SURVEYED BY: W. ROBERT KUSMER  
CLOSURE: 1:10,000  
MAP PAGE(S): 04-00-008  
APPROVED BY: DRH DATE: 6/24/2004  
SCALE: 1" = 400 PRIOR INSTRUMENT: 2000666438