

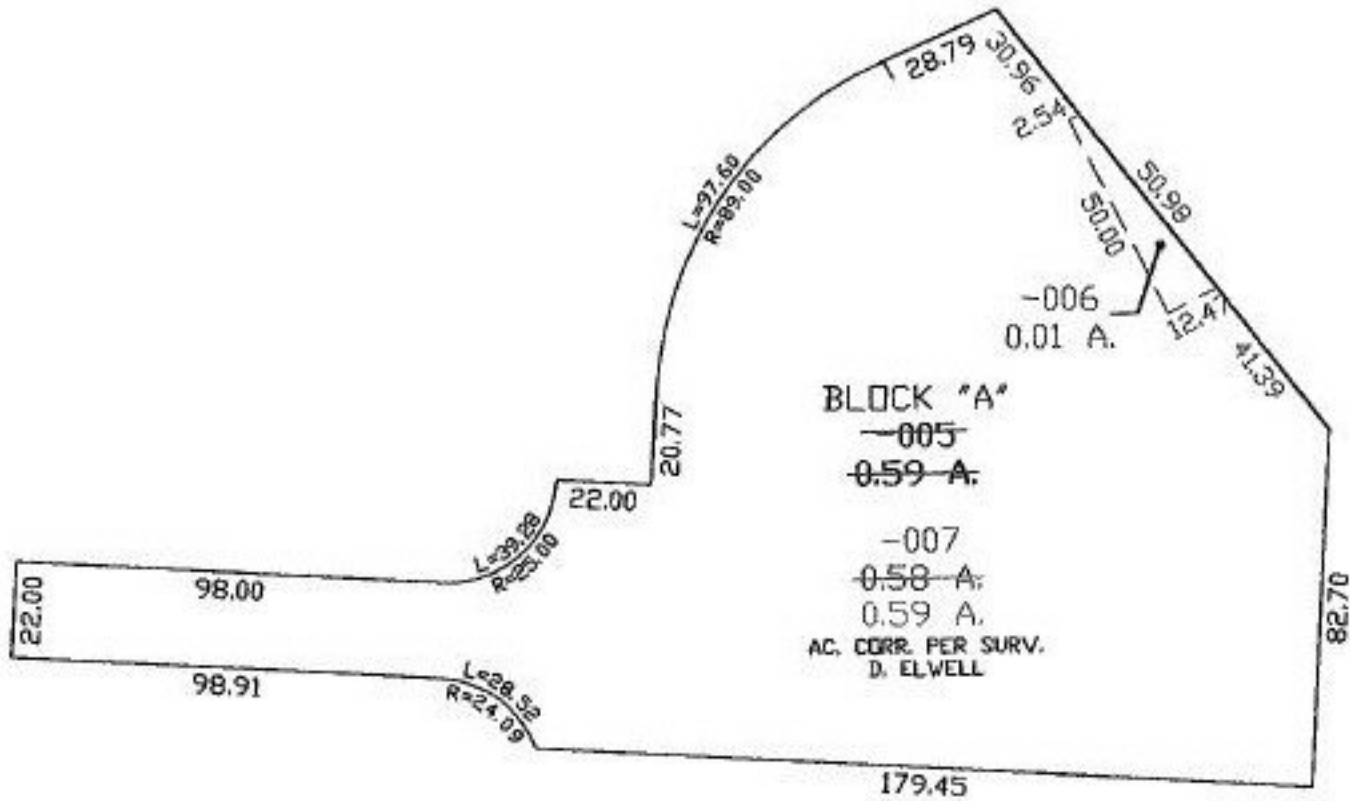
RASTER

PARENT PARCEL: 10-00-005-746-005

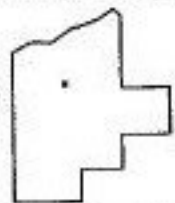
CHILD PARCEL: 10-00-005-746-006 & -007

STARTING POINT: N.E. CORNER OF BLOCK "A", PV. 64 PG. 64-66

NO. 00923



PRIOR INSTRUMENT: PV. 64 PG. 64-66



SPLITS/DEEDS PROCESSED
 LORAIN COUNTY TAX MAP DEPARTMENT
 226 MIDDLE AVE. ELYRIA, OHIO

SURVEYED BY: DAVID L. ELWELL
 CLOSURE: 0.00 : 10.000
 MAP PAGE(S): 10-00-005-F
 APPROVED BY: XXX DATE: 11/21/01
 SCALE: 1" = 50'