

RASTER

NO. 00876

PARENT PARCEL: 07-00-009-115-020  
CHILD PARCEL: 07-00-009-115-043 THRU -045  
STARTING POINT: S.E. CORNER OF SVL 37

SPLIT

~~07-00-009-115-020~~  
~~25 X 105.42~~  
07-00-009-115-043  
12.50 X 105.42  
07-00-009-115-044  
12.50 X 105.42

DEED #1

07-00-009-115-021  
07-00-009-115-022  
07-00-009-115-043  
07-00-009-115-045

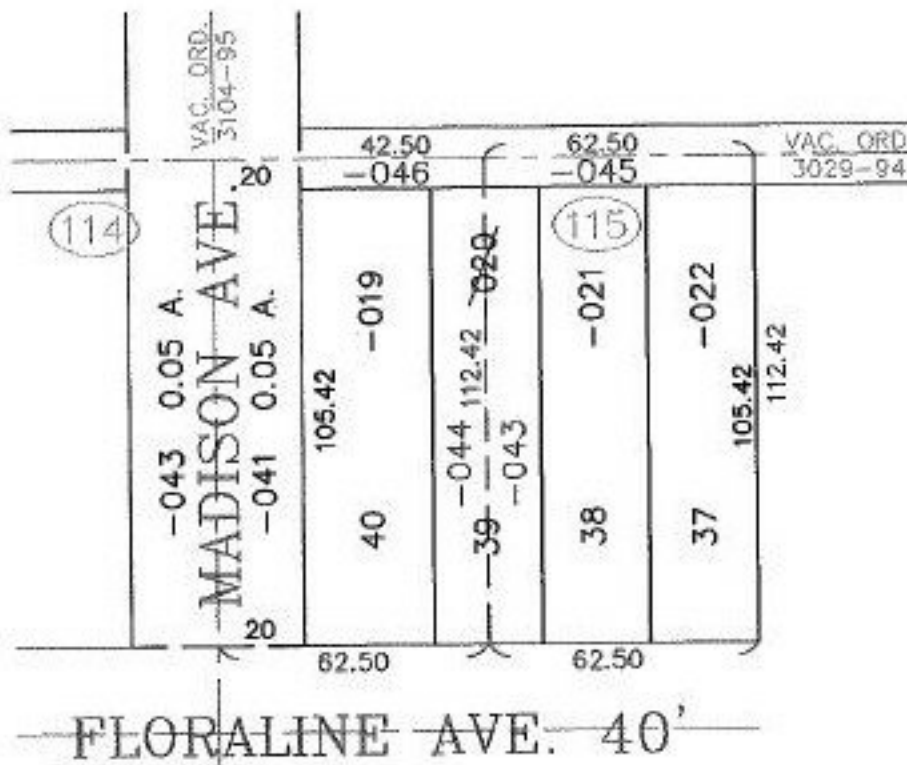


ADD TO DUP.

07-00-009-115-045  
7.00 X 62.50  
07-00-009-115-046  
7.00 X 42.50

DEED #2

07-00-009-115-019  
07-00-009-115-041  
07-00-009-115-044  
07-00-009-115-046



**SPLITS/DEEDS PROCESSED**  
LORAIN COUNTY TAX MAP DEPARTMENT  
226 MIDDLE AVE. ELYRIA, OHIO

SURVEYED BY: MICHAEL C. BRAMHALL  
CLOSURE: 0.00: 10.000  
MAP PAGE(S): 7-00-009-A  
APPROVED BY: TJS DATE: 10/01/01  
SCALE: 1" = 50' PRIOR INSTRUMENT: 980586149