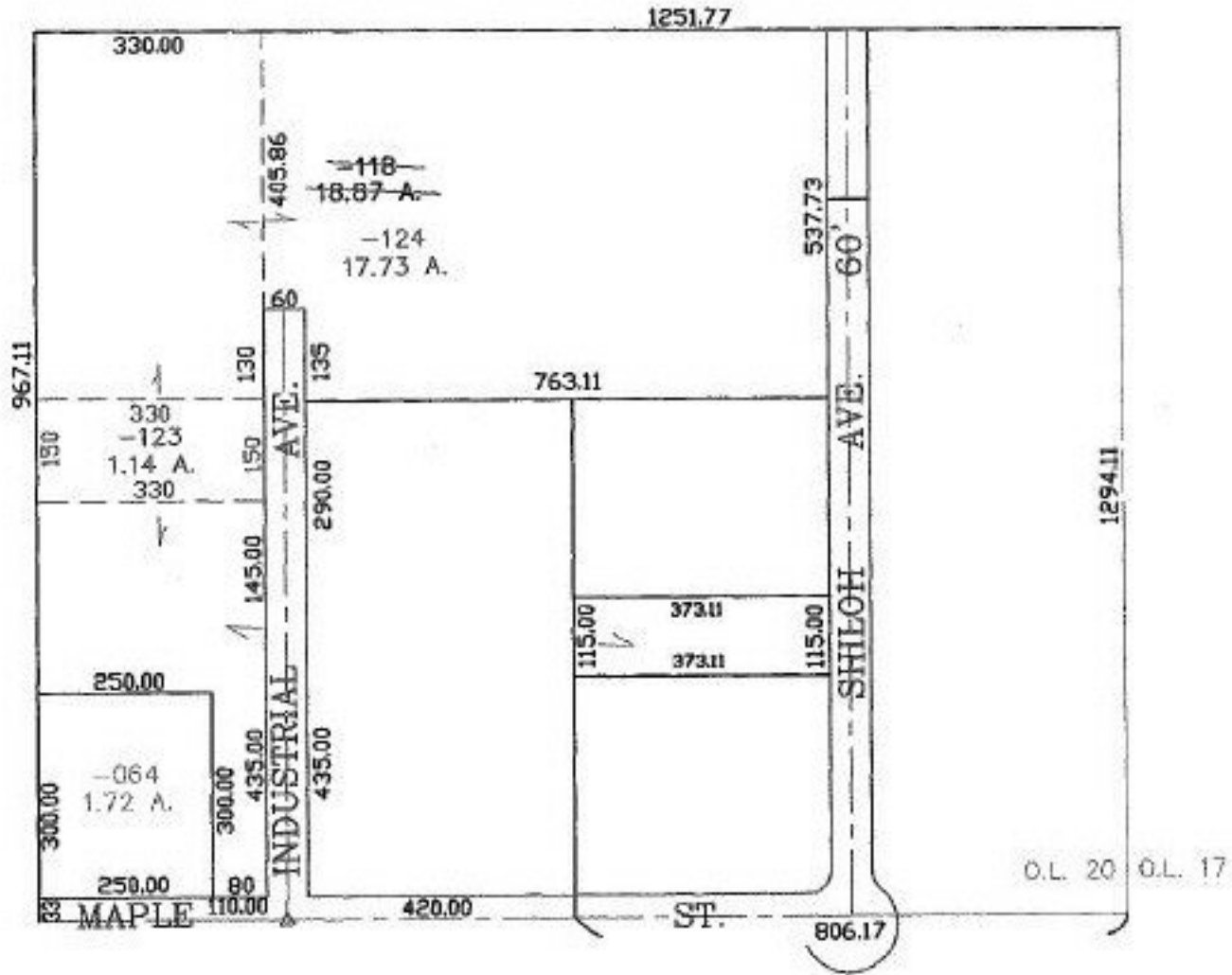


RASTER

PARENT PARCEL: 18-00-020-000-118  
CHILD PARCEL: 18-00-020-000-123, -124  
STARTING POINT: CENTERLINE OF MAPLE ST. & O.L. 20

NO. 00862



**SPLITS/DEEDS PROCESSED**  
LORAIN COUNTY TAX MAP DEPARTMENT  
226 MIDDLE AVE. ELYRIA, OHIO

SURVEYED BY: ROBERT A. SANFORD  
CLOSURE: 0.01 : 10.000  
MAP PAGE(S): 18-00-020-D  
APPROVED BY: JAH DATE: 11-14-01  
SCALE: 1" = 300' PRIOR INSTRUMENT: OR 1396/747